

# THE SPRINGBOK

SOUTH AFRICAN COLLECTORS'  
SOCIETY QUARTERLY

[www.southafricacollector.com](http://www.southafricacollector.com)



Contents	Page	Contents	Page
<b>Society News:</b>		<b>Articles:</b>	
May AGM record	68	Early Errors (continued) Nicholas Arrow	71
Wicks award to Chris Board	69	Different Print Runs of Rotogravure Union	
Library update	69	Definitive Issues Nicholas Lindstrom	73
<b>From The Editor's Desk:</b>		WW2 Censor Labels David Macdonald	80
Obituary for John Philpott	72	Missing Colours on 1975 Tourism issue	
Letters to the Editor from Siegfried Mayr and Wilbert Davids	82	Keith Klugman	82
<b>Postal Auction</b>	84		

# © SOUTH AFRICAN COLLECTORS' SOCIETY 2020

Member of

Association of British Philatelic Societies    The Philatelic Federation of Southern Africa  
We are also a sponsor of the Stamps in Schools Project

**Hon. Life Members (since inception in 1963):** Eric Sherwood†, Reg Allen†, Jack Haggert†, Bill Branney†, Fred Clark†, Godfrey Mellor†, John Shaw, Max Whitlock†, Eddie Bridges†, Roy Ross, Tony Howgrave-Graham.

**Hon. President #**

**Sqn. Ldr. John L. Shaw MBE FRPSL**

Tel: 0208 378 1671    Email: [johnshaw87@btinternet.com](mailto:johnshaw87@btinternet.com)

<b>Hon. Chairman</b> Tony Howgrave-Graham # Tel: 01725 510067 <a href="mailto:ajbmhg@btinternet.com">ajbmhg@btinternet.com</a>	<b>Hon. Treasurer &amp; Membership Secretary</b> Simon Peetoom # Tel: 0795 157 1962 <a href="mailto:simon@africastamps.co.uk">simon@africastamps.co.uk</a>	<b>Distribution Manager</b> David Page Swallows House, Perks Lane Prestwood, Gt. Missenden Bucks, HP16 0JD Tel: 01494 863176 <a href="mailto:pageshouse@aol.com">pageshouse@aol.com</a>
<b>Hon. Secretary</b> Chris Oliver # 46 Woodville Road, Ham, Richmond, Surrey TW10 7QN Tel: 0208 940 9833 <a href="mailto:olivers.of_ham@virgin.net">olivers.of_ham@virgin.net</a>	<b>Hon Librarian</b> Malcolm Ridsdale 41 Woodlands Drive, Thelwall, Warrington, Cheshire. WA4 2JL Tel: 01925 26 2447 <a href="mailto:ridsdales@ntlworld.com">ridsdales@ntlworld.com</a>	<b>Convener of Northern Meetings</b> David Haig - Tel: 01698 292672 <a href="mailto:dh009c6362@blueyonder.co.uk">dh009c6362@blueyonder.co.uk</a>
<b>Hon. Editor</b> Tony Johnson # 7 High Street, Cheddington, Leighton Buzzard, Beds. LU7 0RG Tel: 01296 661342 <a href="mailto:tonyjohanson26@btinternet.com">tonyjohanson26@btinternet.com</a>	<b>Hon. Auctioneer</b> Nick Arrow # The Beeches, Axminster Road, Musbury, Axminster, Devon EX13 8AZ Tel: 01297 552482 <a href="mailto:nicholasarrow@btinternet.com">nicholasarrow@btinternet.com</a>	<b>Overseas Representatives</b> Cedric Roche ( <b>South Africa</b> ) <a href="mailto:croche@mweb.co.za">croche@mweb.co.za</a> Morgan Farrell ( <b>North America</b> ) <a href="mailto:mtf3@usfamily.net">mtf3@usfamily.net</a>
<b>Study collections organisers</b> Rob and Lyn Lester # Email: <a href="mailto:Lyn28Lester@hotmail.co.uk">Lyn28Lester@hotmail.co.uk</a>	<b>Events Organiser</b> Simon Peetoom # Tel: 0795 157 1962 <a href="mailto:simon@africastamps.co.uk">simon@africastamps.co.uk</a>	<b>Hon. Auditor</b> David Osborn <b>Web Master</b> To be appointed <b># Committee Members</b>

## MEETINGS FOR 2020

**Carlisle Meetings:**

**26th September (subject to Covid)**

**London Meetings:**

**Letchworth Meetings:**

**Cancelled until further notice**

### **SOUTH AFRICAN PHILATELIC SOCIETIES ANNUAL CONFERENCES**

**Strawberry Bank Hotel, Meriden 13th to 15th November**

**Note from the organiser:** As you are aware, the current situation around Covid-19 and lockdown has made it difficult to plan any philatelic meetings for the remainder of 2020. However, should the situation improve, it may be possible for the annual conference to go ahead on 13<sup>th</sup> to 15<sup>th</sup> November in Meriden. At the time of writing this, I'm keeping an open mind and the event is currently NOT cancelled. It is my intention to contact the membership and the regular attendees by email in a few weeks' time, in order to take a view on how many people would attend, should the conference happen.

**Front Cover illustration.** The item pictured on the front cover was shown by Rob Lester at the November Meriden conference last year. It shows the use of a roller cancel on an impressive block of the 1910 Union Stamps. Roller cancels were introduced in the early years of the last century to facilitate cancelling on Parcels and used until after the end of the Union period.

*The Springbok* is published quarterly for the benefit of Members of the South African Collectors Society. It is not available to non-members. Contributions in the form of letters, notes, reports of SA related activities, articles, etc., are always welcome and should be sent to the Hon. Editor. All correspondence including a SAE will be acknowledged.

*The Springbok was awarded a large vermeil medal at Stampex 2017*

**Editor**

Tony Johnson

**Editorial Panel**

T. Howgrave-Graham

C. Oliver

J.L. Shaw

© South African  
Collectors' Society,  
2020

Vol. 68 Issue. 2 Whole No. 351  
Founded 1948

## **Editorial**

This month we have a bumper issue containing a postal auction of parts of the late John Philpott's collection that he wanted the society to sell. Nick had planned to offer it in November, but given the uncertainty of us being able to meet then Tony H-G offered to put together a Postal Auction of part of the material in order to give our members the chance of getting some very good material, maybe at excellent prices, sooner. Tony has scanned every lot and all are illustrated on pages 88 to 106. Please send your bids for the lots you would like to purchase to Tony by 24th August.

In addition we have a mix of articles that I hope between them will offer something of interest of all our members. These include more errors made by Imperial Airways that Nicholas Arrow first showed us last month, a detailed description of the different print runs of the Rotogravure Union definitive issues from Nicholas Lindstrom, details of the different WW2 censor labels by David Macdonald and a stunning example of missing colours in the 1975 tourism issue to add to Otto's article on modern errors published in the last issue.

I hope you enjoy them all, and can find some excellent material in the auction to add to your collections.

Tony Johnson

## **Membership**

### **New Members**

We welcome Keith Perrow and Glenn Pfeiffer, both living in the UK.

### **Deceased Members**

We are sad to announce the passing of John Philpott. An obituary will be found in this issue.

Just before going to press we learnt of the sad death of Otto Peetoom. He was a colossus who did so much for Southern African Philately and will be sadly missed by many of us. We will have an obituary, and other tributes, in the next issue.

## **South African Philately Club**

Steve Hannath has created a website, the South African Philately Club. He initially envisaged it as a means of communication during lockdown but we hope it will prove a long lasting web-site for South African philatelists.

Steve loves our hobby and personally really enjoyed going to stamp shows, hunting for new finds and meeting and being with like-minded collectors. The virus ended all that! He hoped that by using this website those who can rise to its technical challenges would regain a part of our lost philatelic life through discussion with other collectors in its Forum and by sharing and showing our treasures in on-line Displays.

Feel free to use the website, join the Club, create a new Topic and or answer one that is already in the Forum. Steve hopes the site will offer users the chance for some lighthearted fun in these desperate times as well as some serious philatelic discussion with other SACS members and, importantly, other collectors of Southern African material in the wider Global Village whom we have never met. (*I looked a day or two ago and a lot of material has been added since it's start - Ed.*)

To join simply click on this link to enter the Club website: <https://southafricanphilatelyclub.com/>

If you have any suggestions for the site's improvement, do not hesitate to share these with Steve.

# Record of the A.G.M. of the South African Collectors' Society of - 16<sup>th</sup> MAY 2020

(Conducted remotely due to Covid 19 epidemic.)

1. **Record of previous A.G.M.** These were approved.
2. **Reports:-** Those from the Hon. Chairman & Hon. Secretary were circulated in the last Springbok. Reports from the Hon. Treasurer & Hon. Auctioneer are included, below.

## **Treasurer's Report to 31st December 2019**

After taking over the role of Treasurer in June 2018 and in my report last year, I felt that for a relatively small society to have bank funds in excess of £11,000 seemed excessive and welcomed suggestions to see if we could find a way to spend them, either benefitting members, or promoting philately.

The Committee await any sensible suggestions. A couple of points regarding the figures (shown overleaf).

The expenditure for 2019 actually covers five Springboks (includes the last 2018 issue) so the figures for printing, distribution and postage are slightly higher in 2019. My thanks to David Page for continuing Roy Ross's efforts to keep control of both printing and postage costs. I'd also like to point out that the Study Booklets did not lose money in 2019, some expenses for late 2018 were paid early in the year. Again, Lyn & Rob Lester deserve our thanks for their efforts in offering this service.

My proposal to keep 2020 subscriptions at 2019 rates was carried and again I would propose that we keep 2021 subscription rates the same.

In the light of the Coronavirus outbreak, so far we have not held any meetings this year, so I anticipate that we will spend less in 2020.

I hope you are keeping safe and well and look forward to getting together in future.

Simon Peetoom

## **A report from the Hon. Auctioneer**

I am pleased to submit my report for the SACS year 2019.

The year has been only moderately successful. 2 Auctions were held, in May and November as usual, and the total commissions received were (May) £149.80 and (November) £374.25.

I believe that the somewhat modest auction results resulted from the fact that throughout the year much of what I offered was on its second or even its third airing. I have believed that unsold material would ultimately find its value if reduced sufficiently, but I have, reluctantly, concluded that, with such a small "client base", and as most of the members of the Society already have complete collections of the more regular material, they will be reluctant to squeeze in the odd stamp(s) which they might find of interest in the auction lists from time to time.

I did receive from one new Vendor a large quantity of new material, which boosted the November Auction considerably and I have one or two regular suppliers of new material. Generally speaking, this material sold quite well, but regretfully it was the old tired stuff which was offered mainly in 2019, for which I have to apologise, but I can only offer what people let me have for sale, and the supply largely dried up in 2019!

I have also been saddened by the reduction in numbers of the live bidders at our auctions. In May there were 9 bidders, and in November only 6.

Fortunately, I have been entrusted with a superb selection of material from a serious collector, which would have been offered in May this year, had the meeting been possible. This will be offered, hopefully, in November, assuming that freedom of movement will have emerged from the shadows of the present lockdown. *(Some of this material is being offered in this issue – see pages 84 - 106 - Ed.)*

I have had the privilege of being the Society's Auctioneer for about the last 10-12 years, a position I have enjoyed, but I feel that it is time I passed my gavel on to another member who will hopefully be able to reinvigorate the auction. I have already notified my intention to carry on only as far as May 2021, and it is my hope that there will be an enthusiastic new auctioneer out there who can take on this most rewarding post. He/she will have my full support.

Nick Arrow

**3. The Accounts for 2019 have now been inspected and are attached.** These were proposed by Huw Williams for adoption, subject to inspection by the independent examiner, and seconded by Adam Cooke.

**4. The committee and officers of the Society.** Were re-elected en bloc with two additions to the vacancies on the committee:

Tony Johnson was proposed by Chris Oliver & seconded by Tony Howgrave-Graham

Rob Lister was proposed by Tony Howgrave-Graham and seconded by Chris Oliver.

David Osborn was appointed as Independent Examiner – Proposed by Simon Peetoom and seconded by Chris Oliver.

**5. Hon. Membership.** John Shaw proposed and Tony Howgrave-Graham seconded that Chris Oliver be offered Honorary Membership of the Society which he was pleased to accept.

**6. S.A.C.S. support for Youth Philately.** Chris Oliver proposed that £50 is donated to Youth Philately as in previous years. Huw Williams seconds this proposal.

**7. A.O.B.**

a) It was proposed that the Society should donate a set of the S.A.C.S. Study Collections booklets to the R.P.S.L. Library. This proposal was not carried.

b) The Royal has set up a fund in memory of Eddie Bridges. Donations will go toward the costs of the new building and an illuminated work table in the library will carry his name. It was considered that the S.A.C.S. should contribute to this fund and that the committee would determine the amount to be donated. A large number of members agreed to this proposal, with suggestions on the amount varying from £100 to £600.

## End of Annual General Meeting

### Wicks Award

Congratulations to Dr. Chris Board who has won the Wicks Award for 2019 with his article “The King’s Head design competition”.

### SACS Library – Update

During the last few weeks, a plus of some time away from “normal” life has been the opportunity to do some tidying up of the Library. I have updated the Library lists and they now include all the books and philatelic magazines in the Library’s possession. I have asked Otto Peetoom to update the list on the web site and that should be out for member viewing when Otto can slot it into his long list of philatelic activities. Thanks Otto for doing this for me and the members.

When you get to see the latest list, you will note that there are a number of additions to the philatelic and non – philatelic sections. These new arrivals are a mix of donations, purchases and auction successes. Thanks are particularly due to Errol van Greunen, Ian Matheson, Otto Peetoom and Mike Berry for their donations to the Library and other members have made available magazines and books to make the Library more helpful to members seeking to research and widen their SA philatelic knowledge. The latest SACS books produced by Rob and Lyn Lester are all now included on the list.

If any member wishes to receive a copy of the Library list electronically please contact me and I will send one out. David Page who looks after the Springbok distribution will make a paper copy available for anyone who relies on “snail mail”.

My details are included amongst the officer information inside the front page of the Springbok.

I look forward to hearing from members in due course if you have any queries to do with the Library and its contents.

Malcolm Ridsdale (Hon Librarian)

***Please get your bids in early for the auction on  
pages 84 - 106.***

## South African Collectors' Society

### Income and Expenditure to 31 December 2019

<b>Income</b>		<b>Expenditure</b>	
Subscriptions	1,599.99	Springbok Printing/Dist.	1479.94
Subscriptions for SAP	107.88	Postage	662.11
Study Booklets	336.41	Purchase SAP subs	210.00
Auction	150.80	Study Booklets	300.90
Packet Circuit	-	Meetings	649.50
		Website	300.00
Advertising	203.82	Library	89.00
Donations		Insurance	0.00
		Other	261.70
Interest	6.24	Donations	120.00
	<u>2,405.14</u>		<u>4,073.15</u>
<b>Surplus for year</b>	<b><u>- 1,668.01</u></b>		

### Balance Sheet as at 31st December 2019

Bank Current	6,304.26	Subs 2020	880.95
Deposit Account	3,125.30	Subs 2020 R1800 @18	100.00
Paypal account	346.12	SAP 2020	435.86
Cash	-	Owed to Conference A/C	0.00
S.A. Rands 2162 @18	120.11		
Packet Fund Account	98.49	Owed to Packet Sellers	0.00
	<u>9,994.28</u>		
Copier	1.00		
Trophies	742.39	Brought Forward	11,035.87
Study Booklets	47.00	Surplus for year	-1,668.01
Totals	<b><u>10,784.67</u></b>		<b><u>10,784.67</u></b>

### **Treasurer's Report (update)**

The above have been examined by David Osborn, our Independent Examiner - I am very grateful for his input and assistance.

After taking over the role of Treasurer in June 2018 and in my report last year, I felt that for a relatively small society to have bank funds in excess of £11,000 seemed excessive and welcomed suggestions to see if we could find a way to spend them, either benefitting members, or promoting philately. The Committee await any sensible suggestions.

A couple of points regarding the figures. The expenditure for 2019 actually covers five Springboks (includes the last 2018 issue) so the figures for printing, distribution and postage are slightly higher in 2019. My thanks to David Page for continuing Roy Ross's efforts to keep control of both printing and postage costs. I'd also like to point out that the Study Booklets had some expenses from late 2018 paid early in the year. Again, Lyn & Rob Lester deserve our thanks for their efforts in offering this service.

My proposal to keep 2020 subscriptions at 2019 rates was carried and again I would propose that we keep 2021 subscription rates the same. In the light of the Coronavirus outbreak, so far we have not held any meetings this year, so I anticipate we will spend less in 2020.

I hope you are keeping safe and well and look forward to getting together in future. Simon Peetoom

## Early Errors (continued)

Nicholas Arrow

(Last month Nick provided an article concerning errors made by Imperial Airways in their early days. He now has more information which is the subject of this article - Ed.)

I refer to my article in the last Springbok. I also published this in the Imperial Airways Gazette, edited by Peter Wingent, and there has been some very helpful feedback from two other contributors to the IAG and the illustrations in this update are both from the collection of one of them, John Berridge.

Without going into too much detail, it would seem that, certainly for the first scheduled flight of 1932, (and I suspect generally for all the flights until the timetables were changed) ALL the mail for Brindisi was bagged for Athens. The published timetable was for the service to arrive at Athens at 3.45pm on Thursdays, with the departure to Brindisi at 8.00am the following morning. [It would be necessary to allow for the hours of darkness, particularly in winter, and the lengthy trip of roughly 350 miles in the Short S-17's used for this part of the service - the Short S-17 cruising speed was 105mph and their total range was 450 miles - hurrying was not an option!] This would enable the mail taken off at Athens to be sorted out and sent on as appropriate. Mail to be flown to Brindisi would be bagged up again and loaded on board in time for the departure the following morning.

Unfortunately the Rhodesian weather gods decided to interfere with the inaugural flight North, and the carefully arranged timetable went clean out of the window, so when the latter stages of the inaugural return service were reached, 'Sylvanus' departed from Brindisi less than 2 hours after it arrived. The sorting office never had a chance!

BUT the sorting office must at the very least have tried, and I have seen scans of 3 items which have Brindisi arrival marks of the 14th February, showing that at least some of the mail for Italy was returned to the 'Sylvanus' for onward transmission by the first flight (fig 1).



Figure 1

Another item addressed to Turin, which bears no receiving mark, was received in Turin on the 16th, early in the morning, which indicates that this too was taken off at Brindisi, which is about 36 hours by train from Turin (fig 2 overleaf). I do not see how this journey could be achieved faster to Turin unless flown to Brindisi.



Figure 2

Which means of course that there are now 2 different types of cover addressed to Italy to try to collect - those which were sorted in time for sending on to Brindisi in the *Sylvanus* and those which were sent on by surface mail. Ho hum!

## OBITUARY

### JOHN PHILPOTT

7 Aug 1927 - 5 May 2020



It's very sad to have to announce the death of another member and friend. John was a child evacuee in Stroud, then Devon, during the war which he remembered as a "great adventure". He was bright and gained a scholarship to study chemistry at Birmingham. With his degree he ended up working as a research chemist for BCL (British Cellophane) at Bridgenorth. His love of music made him join the Bridgenorth Operatic Society where he met a young soprano, Phyllis, who became his wife. She sadly died in 1984.

John not only loved his music, but also cricket and his stamps. He became a member of the SACS in the early seventies and was also a stalwart of his local club. Those of us lucky enough to have received phone calls when he rang for a chat will remember his wonderful booming voice which made us wonder whether the phone was really necessary no matter where he was! He was noted for his remarkable memory and our memory of him will always be a fond one. He is survived by his three sons.

**RIP John**

Tony H-G

# THE DIFFERENT PRINT RUNS OF ROTOGRAVURE UNION DEFINITIVE ISSUES

Nicholas Lindstrom

Special thanks to Bas Payne and Bob Hisey who I consider my “mentors” in this field, Tony Howgrave-Graham for general support, and Morgan Farrell for plating some of the most difficult union material. This paper expands on a presentation Bas and I made in May 2019 to the SACS society on the movement of sheet numbers across selected issues. All errors are my own.

## INTRODUCTION AND NEXT STEPS

This article is an introduction to a series of articles that will look to identify the different print runs across the issues of the rotogravure union definitives. The article both summarises a number of findings to date and sets the scene for follow up articles that will look in more depth at the print runs across individual issues.

The fantastic array of shades of the union definitives is one of the reasons I collect South African stamps and one of the questions the series will look to answer is which of the more interesting shades represents a unique print run and which a variation in colour within a print run.

Any input on this article is appreciated. Please feel free to contact me direct on email: nickandlucy1@gmail.com.

## SOME HISTORY AND KEY IDENTIFIERS OF PRINT RUNS

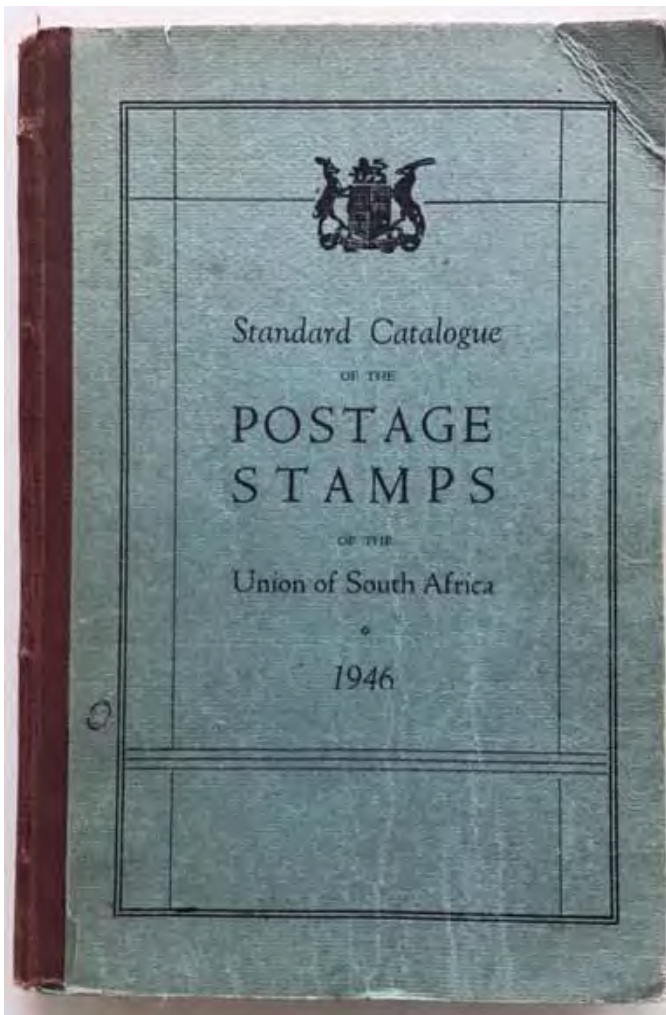


Image 1: Simon and Basen 1946 catalogue (reduced). On page 68 the printings of the KGV coronation are studied using sheet number positions and perforator adjustment rows.

The presentation made by Bas and I in May 2019 started with the response made by the government printer to a query in 1937 on the significance of sheet numbers. The government printer replied: “*the varying of the position of the sheet numbers has nothing to do with the different printings of the stamps*” (published in SAP 1937 (10):178). Possibly as a result of this the study of sheet numbers was neglected for many years. Sheet number positions are actually the most important identifier of different print runs within an issue.

The earliest reference I have seen for a serious attempt to look at the different print runs in an issue was by Simon and Basen in their 1946 “standard” catalogue of South African stamps. Here they referred to the two most important characteristics when identifying print runs, the sheet number position and perforator adjustment rows, and they used these to identify the different print runs within the King George VI coronation issues. The catalogue does not extend this analysis to many other values and the focus on these two key printing characteristics was largely ignored in later mainstream catalogues.

One area later catalogues cover that can be useful for the study of print runs is shades, and many of the shades identified turn out to be separate print runs. However, shades of stamps within print runs can also vary a great deal so by itself shade is not always a reliable indicator of a print run. In the reference text most of us use, Hagger’s Handbook Catalogue, the study of print runs is limited and, with the possible exception of the section on officials, the analysis of shades is more restricted than in some earlier catalogues.

## The “Officials” of South Africa



Dr Robert W. Hisey  
Dr Ian A. Matheson

2017

*Image 2: In their outstanding study of officials, Hisey and Matheson systematically recorded sheet number positions. (Image reduced)*

### **THE CHARACTERISTICS TO LOOK FOR WHEN IDENTIFYING A PRINT RUN WITHIN AN ISSUE.**

The key identifying characteristic is the position of the sheet number. And identifying print runs based off these alone is effective. While more work is needed to understand the positioning of sheet numbers, there are a number of reassuring trends from this study to date. For example, what are described as some of the scarcest printings and those issues only available for a very short period typically have sheet numbers in just a single position; while issues that were around for many years show sheet numbers in many positions suggesting many different print runs.

Further, there is also evidence of sheet number positions remaining remarkably stable through the printing process including during changes in paper rolls, retouching of stamp images and the refurbishment of the perforator.

However, sheet numbers can move relative to other printing characteristics. The movement relative to the printed area (ignoring the perforations) show sheet numbers typically move less than 0.5cm across and up during a print run although this does vary a little over the years, and usually movement is concentrated in a just one of these directions (so a movement both across and up of 0.5cm would be very unusual). Large movements are scarce and to date only observed in one printing on the 840 printer where it seems the cyclometer became loose. For the typical movement found, to what extent this was continuous in one direction or “mean reverting” needs more study.

However given:

- i) there is at least some movement in sheet numbers and the amount of this varies over time;

### **STUDY OF OFFICIALS VERSUS NON-OFFICIAL STAMPS**

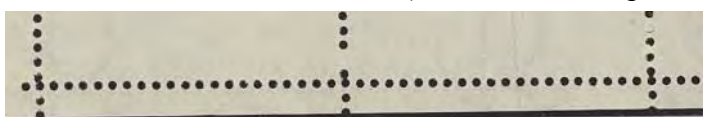
This section on officials is mentioned here largely due to the excellent study published by Bob Hisey and Ian Matheson where they looked at a range of characteristics that can be used to identify the different official sets. However the identification of print runs for non-officials is more complex than for official sets. Official sets can usually be identified more easily than non-officials because official print runs are short. An official overprint run was typically below a couple of thousand sheets compared to the c. half a million sheets that could make up a non-official print run. So, for example, the first two digits of the sheet numbers themselves are typically sufficient to identify which official set a sheet number belongs to. However for most non-official print runs the sheet numbers themselves are typically useless when it comes to identifying a print run because the numbers repeat multiple times over in the long print runs.

Having said this Hisey and Matheson also systematically looked to position sheet numbers in the officials. And it is this positioning of sheet numbers that is a key characteristic of the study of print runs.

- ii) sheet numbers do not always move much (or at all) between printings making it difficult to identify print runs by sheet number position alone;
  - iii) sheet number pieces for some print runs are exceptionally scarce; and
  - iv) this is a young area of study, so it would be no surprise if the very long print runs of non-official issues throw up a number of surprises in particular in the event of any interruption to the print process
- a range of additional characteristics are used to try and identify the different print runs across issues.

The characteristics that I have used to identify print runs include:

- the row impacted by the perforator adjustment or the “PA”. An example of the PA is shown in *image 3* and this characteristic is described in more detail in the footnote below.\* The PA is what creates the occasional row of “narrow” stamps found from time to time. This is the second characteristic highlighted by Simon and Based in their 1946 catalogue in the study of the KGV coronation printings. For printings on the 830 printer\* the PA row appears twice on each sheet, once every 11 rows and is most commonly found on rows 10/11 and 21/22. When this PA moves this is an excellent indication of a new print run (and so far I have seen no example of a PA change within a single print run on the 830 printer). It is also possible the PA position can help identify the order of print runs within an issue but more work is required to confirm this. When identifying print runs the value of the PA is lower than that of the position of sheet numbers because: i) the number of positions the PA can appear is restricted (there are just 11



*Image 3: An example of a perforator adjustment row or PA. The PA can be difficult to see where adjustments are small.*

different possible row positions); and ii) the perforator adjustment was often set to rows 10/11 and 21/22, in particular during later printings in the study period. For the 840 printer the PA has not been found to help identify print runs as this can adjust on any row (although further study may show otherwise).

- the position of the perforator adjustment. For the 830 printer\* the position of the perforator adjustment row or the “PA”. This is what creates the occasional row of “narrow” stamps found from time to time. This is the second characteristic highlighted by Simon and Based in their 1946 catalogue in the study of the KGV coronation printings. For printings on the 830 printer the PA row appears twice on each sheet, once every 11 rows and is most commonly found on rows 10/11 and 21/22. When this PA moves this is an excellent indication of a new print run (and so far I have seen no example of a PA change within a single print run on this printer). It is also possible the PA position can help identify the order of print runs within an issue but more work is required to confirm this. The value of the PA is of less value than the position of sheet numbers because PAs are often the same across different print runs as: i) the number of positions the PA can appear is restricted (there are just 11 different possible row positions); and ii) the perforator was often set to rows 10/11 and 21/22, in particular during later printings in the study period. For the 840 printer the PA has not been found to help identify print runs as this can adjust on any row (although further study may show otherwise).
- shades of stamps. Some are for shades and some against but for me interesting shades have often proved invaluable in identifying print runs within an issue. Having said this care needs to be used as: i) shades can also vary dramatically during a single print run (and as discussed later some of the shades Hagger states show separate printings are actually shades that occur within a print run) and ii) shades

\* *Footnote: The perforator adjustment realigns the perforation holes of a sheet to keep these holes aligned with the printed stamps. The entire affected row is impacted by the adjustment. If the perforations are already well in alignment with the printed stamps there may be no clear evidence left by the perforator adjustment. However, there is typically evidence along the affected row that shows that the alignment of the perforations have changed or jumped. The perforations may jump in any direction, and on occasion a shift down is large enough to leave what is referred to as a “narrow” stamp. There were two printers used for the stamps in the study period, the 830 and the 840 printers. For the 830 printer the PA happens twice per sheet, eleven rows apart. For the 840 printer this can happen on every row. The faster 830 printer covered the whole study period while the slower 840 printer was first used around 1940. It is easy to tell apart sheet number blocks from the 830 and 840 printers. The 830 printer sheet number blocks show four digits while the 840 printer sheet number blocks show five digits.*

Image 4: An example of how much shades can vary even across a pair. However, once familiar with material from an issue, shades are a real help identifying print runs.



vary across a sheet (so when comparing shades in an issue it is best to look at pieces from the same position). Technology that reads the colour in scans exists to help identify shades but this is not something I have looked into.

- for 840 printer issues with the 5 digit sheet number, the number of the sheet number itself. The combination of the shorter runs on this machine and the 5 digit sheet numbers means that sheet numbers alone can usually place stamps into a print run (a bit like with official stamps, discussed below). But care is required when different print runs of the same issue have overlapping sheet numbers.

Image 5: Blocks from the same print run on the 840 printer placed into printing order based on sheet numbers. (Image reduced)

- the width/height of the right, left, top and bottom margins as measured from the paper edge to the printed area, and width and possibly length of the entire sheet. The study of issues with single print runs, officials and printings of the 840 printer all help to improve our understanding of how much these measurements vary over a print run (and for officials and the 840 printer, how much these measurements vary over a given number of printed sheets).
- the paper used, and the quality of paper edges. The right and left margins showing the paper quality before printing and the top and bottom edges showing the state of the blades used in the printing process. In addition, the type of paper (white/toned) although this may instead point to a change in a paper roll during a print run as opposed to a new print run. This was a topic looked at in my earlier article “Using Rotary Blade

Damage to Study Union Stamps”, The Springbok Vol 59/4, Oct/Dec 2011.



Image 6: The edge of 1½d issue 8 supports identification of print run. Smooth paper edge on the right pieces (print run 1) and rough on the left pieces (print run 2).

- errors, scratches, and smudges. Care is needed as these characteristics can vary with the amount of ink available at a point in time in the printing process, so may not be evidence of a print run. Further, errors, scratches and smudges often occur during a print run, and may be “cleaned” between print runs which can make them

difficult to use to identify a print run. However, at times these characteristics do prove valuable in identifying or confirming a separate print run. Also, a further advantage of the study of these flaws is they can help to put print runs in order.

- the colour of the sheet number. A colour of a sheet number may suggest a new print run. However, the colour of the ink used for sheet numbers is believed to have changed during some print runs (discussed further below). Where the colour of ink changes during a print run this may help put print runs in order.
- the type and pattern of the sheet numbers produced by the cyclometer. The cyclometer became worn, was replaced and was refurbished from time to time and as a result the actual pattern of sheet numbers changes between different print runs. Further the change in the cyclometer over time helps build up a picture of the order of print runs. However, the quality of the printing of the sheet numbers themselves is also tied to ink levels which means this analysis is not always straight-forward.
- size of perforation holes, perforation patterns (“misplaced holes”), and blind perforations. Variation in



size of perforation holes is useful when found but only a few printings were affected. On perforation patterns or “drunken perforations” there is some suggestion this could be useful but there is limited progress in this area to date. The use of the replacement perforator when the main perforator was being serviced may be of help for affected print runs. Blind perforation patterns may group some items together on a print run but are not expected to be constant across a print run.

*Image 7: Two distinct type of sheet numbers used in different print runs of 1/2d issue 22.*

- inverted and upright watermarks. A change in watermark suggests a new print run but this could also signify a change in the paper roll during a print run. A question: does anyone have a paper join that shows both upright and inverted watermarks on the same piece? I have looked at a good number of paper joins but so far have not seen one showing both upright and inverted watermarks.
- sheet numbers on left margin or sheet numbers omitted. Excellent indication of a print run but few issues show these characteristics.
- officials. The study of officials adds a lot to the study of print runs. This is in part because this is the easiest way to put sheets from the 830 printer into printing order allowing for in-depth study of how printing characteristics change over a given number of printed sheets. Further, because many of the values in official sets are printed in a single print run, any characteristic associated with such a value can be reliably placed as belonging to this print run, greatly aiding study. So for example it can be hard to place the PA row for many non-official stamps into a print run unless the PA row happens to appear on the same piece as the sheet number. However, many official pieces showing the PA row can be assigned to a print run as long as the official set is recognised. Finally, the sheet number pieces for many print runs are scarce so official pieces with sheet numbers provide an additional source of material for study and the official sets cover a surprisingly large number of the total print runs.

### **HAGGER’S HANDBOOK CATALOGUE AND PRINT RUNS**

Hagger’s outstanding “Handbook” has made the study of print runs possible. The starting point for the study of print runs is sorting stamps into issues and the Handbook is my reference source for this. Having said this, information on print runs is limited in the Handbook, and what information there is on print runs could do with an update. Below we look at a number of statements made by Hagger in the Handbook on print runs (extracts in italics) and show examples of what can be learnt from the further study of print runs within issues.

- 1) References to “one” or “a printing” may instead refer to multiple print runs, or a characteristic stated to reflect a printing may instead reflect a characteristic found within a print run. Examples:
  - i) 1s issue 5: “*one printing was made on the 840 machine*”. There were several (at least four) printings of the 1s issue 5 on the 840 machine based on sheet number movements. Similarly Hagger refers to “one” printing of the 6d issue 5 and 3d issue 4 (and again there were several of each). [See Image 8 overleaf]



Image 8: Four different print runs of the 1s issue 5 on the 840 machine. (Image reduced)

ii) 6d Issue 6: had “one printing on paper with a different gum, the surface of which had a distinctly “ribbed” appearance”. Based on sheet number positions the “ribbed gum” paper may not represent a separate print run but instead a change in paper that took place during a print run.

iii) 1½d issue 2: “Issue 2. The first printing of these stamps, a very small one had the vignettes printed with the same bronze ink as that of the earlier production.” The sheet numbers did not move as the vignette ink changed from the bronze ink to ink with a higher level of orange pigment. So instead this may be a change in ink during the print run and not a separate print run.

iv) 3d issue 5: “one small printing had the stamps in a deep dark blue colour”. From material seen this much discussed shade appears to be part

of a longer print run in which shades varied.

There are also cases where Hagger pointed to a single printing and there was indeed just a single run. For example, in the case of the 1d issue 11 olive grey shade Hagger stated: “one printing in which they are olive-grey”. From sheet numbers pieces seen this distinctive shade was found on just one print run.

Image 9: The distinctive 1d issue 11 olive grey shade found only on one print run.



2) The use of a wider range of printing characteristics greatly aids identification of issues and this is generally not captured in the Handbook. There are many examples of text like: “in the absence of a marginal arrow or some constant variety, it is not possible to allocate stamps to any particular issue”. This particular extract is from the ½d issue 16A to 18 but this is a common theme throughout the Handbook. Using the list of characteristics above (and in particular the sheet number) can be an excellent way to identify otherwise difficult issues.

## Please Help

The society is still looking for a new auctioneer. Please think seriously about this as the society needs your help!

3) The change in the colours of sheet numbers are more complex than is described. “*To begin with they [sheet numbers] were in four figures and printed in black, then for a short time in blue and finally in red.*” Further under the description of the ½d issue 10 the change in sheet numbers is described as “*Black then Blue*” and “*had blue sheet numbers on later printings*”. From the study of the print runs of ½d issue 10 the colour of sheet numbers appears to have moved from blue to black, and then back to blue before turning again to black (or possibly the order was blue to black and then back to blue and finally black, but this would seem less likely). Further, the colours of sheet numbers look like they changed during some print runs so statements like “[1d issue 12] *in one printing they were blue*” may be incorrect.

4) Other specific references:

i) *...as the blue numbers in this issue [1d Issue 14] are always accompanied by the red eleventh row flaw they can easily be distinguished from those of Issue 12.*” This is correct for one of the print runs with blue sheet numbers, but there is a further print run with blue sheet numbers where there is no accompanying red eleventh row flaw.

Image 10: Blue sheet number blocks on 1d issue 14. On one the eleventh row flaw not present on a sheet number block of four (on the row above).



ii) “*Issue 13 [1d] had the sheet numbers in black*”. There appear to be at least two print runs in this difficult issue with blue sheet numbers.

### ***APOLOGIES AND REQUEST FOR FURTHER INFORMATION***

*There is literature on SA stamps that I have not read so advance apologies where I am repeating information that is already published and not credited others on their studies produced. If you are aware of material that will move forward the study of print runs please get in contact with me on nickandlucyl@gmail.com. There may be errors in this article and in the series to come and corrections are appreciated. I hope by publishing on this topic errors will be corrected and we can further advance the study of the different print runs of the rotogravure definitive issues.*

### ***Other magazines***

**Forerunners**, the journal of the Philatelic Society for Greater Southern Africa, a Society based in North America. In the latest issue there are articles on uses of the Natal 1d postage overprints in Zululand and the OFS, Destinations of PO Postal Stationery, and Apartheid and the Post Office.

In the latest **RSA Study Group Newsletter** there is a detailed article on the Printing of stamps in the 1960s. I don’t have permission to forward either of these newsletters to members but if anyone is interested in either I am happy to put them in touch with the respective Editors.

Don’t forget we also receive copies of **Bartholomeu Dias**, a Dutch language magazine, which I do have permission to circulate to members for anyone who can read that language. Among a number of articles this month they range from the Natal Chalons to new and recent issues.

# South Africa - World War II Censor Labels

David Macdonald

South Africa censor labels, in general use during WWII, were printed on white or shades of white paper, the lettering being in red ink. Wording on the label was bi-lingual, separated by a line down the centre, with Afrikaans on the left and English on the right. The printer reference, in Afrikaans and the equivalent in English, appeared at the top of each half. The information wording on all labels was **DEUR SENSOR OOPGEMAAK.** and **OPENED BY CENSOR.**

There is, however, more than one type of label, and all may have been used simultaneously by censors throughout the various censor facilities. A date of issue of the labels has not been established.

To compare labels I have studied the word “**CENSOR.**” on the basis that the font size applies to all lettering advising that the item had been opened. Illustrations of labels are poor due to the fact that part of a label is on the front of a cover with the remaining part on the reverse; soaking off is not an option due to most labels being tied with a censor cache, Union of South Africa Coat of Arms and a letter indicating the place of censorship. A pencil mark was, in many instances, also added indicating the censor who examined the contents.

## Type 1.

CENSOR. (including full stop) - 24mm x 7.5mm.

The wording of information, in Afrikaans and English, on two lines.

Printer reference - Afrikaans **U.C. 8. (Klein)**, English **U.C. 8. (Small)**

This label also had, between the printer reference and the advice of opening, in small lettering - **UNIE VAN SUID-AFRICA.** and **UNION OF SOUTH AFRICA.**

Size of the label 90mm x 47mm.

I suspect this was the first label produced. After production of this label the authorities removed the country name presumably as a wartime security measure, similar I believe, to removing the town name from some paquebot cancellers. The postage stamps, however, indicated the country of origin. The other reason may have been to save ink bearing in mind the reduced War Effort stamps.



*Type 1 label showing part of envelope to illustrate the full Coat of Arms and letter A.*



*Type 2 label, the letter under the coat of arms is*

## Type 2.

CENSOR. (including full stop) - 30mm x 7.5mm.  
Wording of information on three lines.

Printer reference - Afrikaans **U.C. 8. (Klein)**, English **U.C. 8. (Small)**

Size of the label 90mm x 47mm.

### Type 3.

CENSOR. (including full stop) - 30mm x 7.5mm. Wording of information on three lines.

Printer reference - Afrikaans U.C. 8 (Groot), English U.C. 8 (Large), with in the top left corner G.P.-S.

Size of the label 90mm x 47mm.



*Type 3 label showing part of envelope to illustrate the full Coat of Arms and letter A.  
Censor 116, in pencil.*

### Type 4

CENSOR (no full stop) - 21.5mm x 4.5mm.

Wording of information on three lines.

Printer reference - Afrikaans U.C. 8. (Klein), English U.C. 8. (Small)

Size of the label varies between 80mm and 90mm x 27mm.



*Type 4 label showing part of envelope to illustrate Coat of Arms and letter C.*

### South Africa - Censor Codes on Coats of Arms WWII

A	Cape Town	K	East London
B	Johannesburg	L	George
C	Durban	M	Cape Town
D	Windhoek	N	Pietermaritzburg
E	Cape Town	O	Kimberley
F	Pretoria	P	Cape Town
G	Bloemfontein	R	Cape Town
H	De Aar, Cape Province.	S	Cape Town, thought to be for Civil Maritime mail.
J	Port Elizabeth	T	Cape Town, thought to be Active Service Maritime mail through Cape Town

The above list has been gleaned from somewhere in the past.

## *Letters to the Editor*

After publication of the original list of 1938 Voortrekker Commemorative Covers one of your readers reported that he had a cover postmarked Petrus Steyn, dated November 2, 1938 with the appropriate Voortrekker Monument machine cancel on the back. I have added this, obviously genuine cover to my list. The updated list is shown on page 107.

I continue to welcome contact with others who might have covers missing from the list.

Siegfried Mayr

The following letter came just too late for last the Springbok (350). Apologies to Wilbert.

There is a small error in my article in Springbok #349:

The cover in Figure 4 is in my collection (instead taken from the internet), whereas the cover in Figure 3 was taken from the internet (instead in my collection).

Also, I would like to react on the cover of which Nick Arrow is seeking help (page 27).

He wants to know why the cover is in this condition. As far as I can see, and is also my experience, there is no specific reason for this, although sometimes APO-cover are seen worn. The airmail was far from ad-hoc at the time, since airmail to the UK was already resumed at the time.

Wilbert Davids

---

## *First day cover with missing colours on the stamps of the 1975 tourism issue of South Africa*

*Keith P Klugman FRPSL*

In the most recent Springbok (1), Otto Petoom beautifully illustrates the surprisingly few commemorative Republic stamps found with the major error of missing colours, given the profusion of RSA commemorative issues over the past 60 years.

One such issue was mentioned but not illustrated because the original auction catalogue illustration was just in black and white and that is remedied below.

The SA post office has since the late sixties produced official first day covers, a number of which have been found with missing colours, but given that the covers themselves do not have a monetary value, the security screening for such varieties may be less rigorous than the screening of stamp varieties. Nonetheless, missing colours on these covers are generally rarely found, but the combination of a missing colour on a stamp, used on an official FDC, has to my knowledge only been recorded twice.

One is the 1879 4c 50<sup>th</sup> Anniversary of Christmas Stamps missing the gold lettering, which I have not personally seen on an official FDC, but is mentioned by Otto on page 46 of his article (1).

The second is the 1975 SA tourism set on which the variety is described by SG in a footnote as occurring on two sheets each with two panes of forty stamps producing A and B cylinders (1). The notion that there are just two sheets known is credible. The procedure of the post office at that time was to use stamps to produce official FDC's, but the cylinder blocks from the bottom of the sheets were spared and sold to collectors, rather than using them to affix to FDC's. This explains how just two sets of the known A and B cylinders have been recorded. The cylinders are described as blocks of 6 (1), which would allow 8 additional blocks of 4 per pane, to be affixed to each FDC. There are thus a maximum of 16 blocks of 4 used on FDC, if two panes were used, or double that number if all 4 panes were used for FDC's. To my knowledge only 2 examples on FDC have been sold at auction, so the rest remain to be found.

The missing colour in the letters RSA and the 15c denomination are best shown compared to the normal stamps and are illustrated in Figure 1 (on the adjacent page).

### Reference

1. Petoom O (2020) RSA – major commemorative varieties. Springbok 68: 42 – 47.



Fig 1. RSA FDC 2.10 of the 1975 Tourism issue showing the normal cover above and missing orange and yellow in the RSA and 15C in the lower block of stamps.

***Nick Lindstrom tells me his article was written during the lockdown. I am sure other collectors have also organised their collections during this time and I suggest that they could also prepare an article for publication. Please consider doing this and sending it to the Springbok.***

**SUMMER POSTAL AUCTION**  
**CLOSING DATE**  
**MIDDAY - MONDAY - 24 AUGUST 2020**

John Philpott's obituary appears in this issue. He had a huge collection and was keen to offer the more specialist bits through the SACS. Some very fine material of his (and other vendors) appears in Nick Arrow's auction which has had to be postponed but will be run at the first opportunity of holding a public auction. To fill the gap and give you all something to admire and join in with during lockdown this auction features 131 lots from John's collection all suitable for sale postally. They are all estimated on a "priced to sell" basis so let's see if we can get 100% sales!

Please note that I am running this auction as a "one off" and not Nick Arrow. The lots are liberally illustrated and I have scans of all so any queries, or requests, should be directed through me. So, come on, let's do John proud!

**bids and queries accepted by email (ajbmhg@btinternet.com)**  
**or snail mail :** Tony Howgrave-Graham, The Cottage, Barford Lane,  
Downton, Salisbury, Wilts. SP5 3QA

**King's Heads**

	E/V
1. ½d. plate 1, top control single, mounted in margin only, scarce .....	£25-30
2. plate No. singles:- top - ½d pl.5, 1d pls.4&6, 3d blk & red, 3d blue & 1/3 and bottom - ½d pls.5&6, 1d pls.6&7, 2d pls.1&2 and 4d. fine mm & um. (13) .....	£40-50
3. ½d plate 5:- top B4 & bottom left corner B4 with control No.s : B4 with central gutter & ornament from btm left corner btm left pane : also a scarce top right corner control B4 with <b>reversed perforations</b> . All fine mm or um (ex marginal crease on one) .....	£25-30
4. 1d Plt.1or2 : top left corner B4 with no control No. - mounted margin only, faint crease affecting bottom right stamp but a rare item .....	£80-90
5. 1½d, plate 2, all 4 corner pairs, mm, nice .....	£20-25
6. 2½d bottom left corner control strip of 3, stamps um .....	£6-8
7. 2½d bottom left & right corner control B4's, fine lmm .....	£16-20
8. 4d inverted watermark, top control single, stamp um .....	£6-10
9. 1/- bottom right corner control B4, mm (marginal thin) .....	£18-20
10. 2/6 top control single, stamp um (marginal repair) .....	£20-25
11. 5/- light blue, bottom control single, stamp um .....	£50-60
12. 2½d & 4d horizontal interpanneau pairs, scarce, lmm .....	£22-26
13. 6d B4 with gutter margin at left showing missing jubilee line, top pair mm, bottom um - a nice Item .....	£50-55
14. 5/- deep blue a fine um marginal pair (cat £240) .....	£70-80
15. £1 pale olive green & red, fine lmm, cat £850 .....	£180-220
16. ½d, 2½d, 6d & 1/- overprinted SPECIMEN, fine lmm .....	£22-25
17. ½d & 1½d coil strips of 4, um, 1½d with join .....	£17-20
18. 1925 AIR - a set of forgeries in B4's, unmounted mint .....	£50-60

**1926-30 London Pictorials**

19. 1926 London ½d - top left ¼ sheet of 60, fine mint (includes varieties and 3 extra perf holes in left margin) .....	£27-30
20. 1 May 1926 6d superb rt marginal B4 cancelled 1st day at Sea Point .....	£30-35
21. 2d perf 14 with <b>inverted watermark</b> , fine mm, cat £850 .....	£240-280
22. 2d perf 14 inscriptional pairs from left & right panes, fine mm .....	£20-24
23. 2d Gp.II (perf down), bottom left marginal B4 from the right pane and an inscriptional B4 (also rt pane), fine um .....	£45-55
24. 2d with <b>split 2 variety</b> :- p.14x13½ up and down, mm (the first is scarce, cat "400" in the handbook, latter cat £150 in SG) .....	£80-100
25. 2d with <b>split 2 variety</b> , perf up (scarce), used (also a repaired perf down pair) .....	£70-80
26. Gp II ( perf 14x13½ down) top & bottom marginal pairs of the 2d & 3d and a top right corner pair of 1/- good lot, cat £360 unmounted mint .....	£100-120
27. 3d Gp.II(down) fine (ex very slight even toning) bottom right corner B4 from the left pane. Cat £160 .....	£22-26

28. 3d Gp.II, fine inscriptional B4, unmounted mint.....	£45-50
29. 3d perf 14 (Gp.I), inscriptional pair, unmounted mint.....	£10-12
30. 4d Gp.I, perf 14, inscriptional pair, unmounted mint .....	£18-20
31. 4d Gp.III, perf 14x13½ (up), inscriptional B4 (top pair only mounted).....	£32-35
32. 1/- Gp.I, perf 14, inscriptional pair, unmounted mint.....	£12-15
33. 1/- Gp.III (perf up) inscriptional pair, mm.....	£22-25
34. 2/6 perf.14, bottom left corner pair, stamps um (faint crease edge of lt stamp).....	£35-40
35. 5/- perf 14, bottom right corner pair, stamps um, gum creasing, (thin marg edge).....	£60-70
36. 2d perf 14 pair, Gp.II pair & B4 (different plates), fine cds used .....	£20-25
37. Used inscriptional pairs for 2d & 3d (both Gp.II, perf down) and inscriptional B4s of Gp.II and Gp.III 1/- (margin of former shortened) - v high cat .....	£80-100
38. 10/- perf.14, fu .....	£35-50
39. 10/- perf.14x13½ (down), used, faint horizontal crease .....	£35-50

### **Pretoria typographed**

40. ½d superb bottom right corner B12 (2x6), Plate 1 control, um.....	£15-18
41. ½d 1948 reprint : fine mm reconstructed miniature sheet (all 4 corners, top & bottom centre B4s, arrow B4's & a B4 for the middle!).....	£18-25
42. 1948 ½d reprint bottom half sheet of 120, fine mint, nicely presented .....	£30-35
43. 1d <b>offsets</b> :- B4 with partial offsets of the complete design and vertical pair with fine offsets of a vignette and a half, um.....	£35-40
44. 1d (Plt.3) left arrow B6 and right arrow strip of 3 doubly perforated, fine mm .....	£20-25
45. 1d (Plt.3) top right corner B6 and right arrow B4 both doubly perfd. Mm .....	£32-36
46. 1d (plt.3) fine right marginal B6 with double perfs. Um .....	£28-32
47. 1d (Plt.3) fine right marginal B6 <b>triple perforations</b> , lmm, scarce .....	£50-60

### **1935 Silver Jubilee**

48. superb marginal B6's of all values, all showing stage 1 <b>cleft skulls</b> and tagged ears, scratch on 1d also present, m margins only, scarce so fine .....	£70-80
49. 1d marginal B6 with stage 3 <b>cleft skull</b> , stage 5 scratches and tagged ear. top pair only mounted (but this is cleft skull pair), inconsequential marginal thin .....	£10-15
50. Set all showing <b>spot above head &amp; behind neck</b> (row 12/5) SG65b-68b lmm.....	£45-50
51. 1d left arrow B18 (6x3), right arrow B10 (includes SG66b) and bottom corner B14 with serial numbers, fresh um but a few discrete fox spots on gum .....	£25-30
52. 3d fine um bottom arrow B4.....	£18-22

### **1933-54 Hyphenated rotogravure**

53. 1936 ½d, Issue 4A, wmk up, SG54aw: a very fine mint bottom left corner block of 10, one stamp only mounted, cat £68+.....	£16-18
54. - ditto - fine lmm/um B12, cat £102 .....	£16-18
55. 1939 ½d Issue 8, top left corner B4 with V17 on row 2/1, mm, and a serial No B6 with mp V4, stamps um (B4 with rounded corner).....	£7-9
56. 1941 ½d Issue 12 top right corner B18 (3x6) in grey & blue shade, dated 18.11.47 in pencil in margin, stamps um .....	£8-10
57. ½d Issue 12 top arrow B4 and serial No. B4 (the latter with sepia centres) fine lmm/um .....	£8-10
58. ½d Aug 1947 Issue 14, top, middle and bottom double rows (so all corners & arrows) fine mint with stamps um. (72) very desirable .....	£35-45
59. - ditto - top right corner B8, serial No B4, half arrow B4 with variety, fine lmm or um beautifully Presented.....	£12-15
60. 1947 ½ds <b>unscreened crosshatch</b> (Issues 15-16):- a B4, marginal pair and another pair, lmm or um(2 pairs) scarce issues.....	£20-25
61. 1948 ½d Issue 17 (the narrow sheet issue with frames only screened) : top and bottom rows and double middle row (so all corners & arrows), fine lm or um .....	£28-32
62. - ditto - fine um B30 (rows 2 to 7/1 to 6), SG114,114b, with the <b>bushtick variety</b> on row 3/1 (rather than usual 3/4), also good V13 on 6/1. cat £90+ .....	£26-30
63. 1948 ½d, Issue 18, all 4 arrow B4's, fine lmm .....	£24-28

64. 1949 ½d Issue 21, the <b>charcoal</b> printing (non-varnished ink used for centres) : the bottom 3 rows with both Cyl Nos and arrow (2 stamps top row mm, rest um).....	£32-36
65. 1934 1d Issue 10, top arrow B4, fine lmm.....	£8-12
66. 1935 1d, Issue 11, <b>imperforate pair</b> , SG56a, cat £180, um.....	£60-80
67. 1935-48 1d's:- Issue 11 pair with V15 & serial No B4, Issue 17 (sunset) serial NoB4 and a B6 in pale shade ex booklet, fine mm or um (16).....	£12-15
68. 1936 1d Issue 12: left & bottom arrow B4's, fine mm.....	£25-30
69. 1938 1d Issue 13, right arrow B4, lmm (minor perf faults btm left corner).....	£14-16
70. 1939 1d Issue 14, bottom arrow B4, lmm.....	£10-12
71. 1936 1½d, wmk up, SG57, top corner B's of 4 & 6, B4 with V3 (bulge in frame), pair with broken chimney, 2xbtm left corner B4's. fine lmm or um, cat £147.....	£25-30
72. 1940 1½d dull gold, SG57, top arrow B14 (7x2) with variety, stamps um but some tone spots on gum. cat £45+.....	£10-12
73. - ditto - all 4 arrow B4's, fine lmm (cat "120" in handbook).....	£25-30
74. Medium format 1½d, Issue 4, <b>waffle plate</b> , lmm.....	£10-12
75. 1948-9 medium 1½d, Issue 9 pair with V6 (frame break r.3/16) and Issue 10 pair with V13 ("cruciform", r.7/1) both um.....	£6-8
76. Nov.'38 2d blue & violet, top left corner pair, stamps um cat £75.....	£18-20
77. Nov.'38 2d blue & violet, bottom arrow B4, fine mm cat £150++ (thin in bottom left of margin).....	£40-50
78. - ditto - 2 pairs, shades (one with a major rash!), mm, cat £150.....	£18-20
79. - ditto - pair with good V5 "tree on roof", mm.....	£15-18
80. 1941 2d grey & purple - a fine lot on an album page - 9 pairs + a B4, fine mm or um, varieties include "ladder" on row 1/4. cat £715+.....	£80-90
81. 1938 2d blue & violet pair, 1941 2d grey & purple left & right arrow B4's and bottom arrow in a strip of 3, generally fine mm. cat £400+.....	£50-70
82. 1940 3d, development of the "searchlight" flaw (V3) - fine marginal B8 with black serial Nos & stage 1 flaw, the same with red serial Nos and stage 3 flaw, also a vertical pair with stage 2. fine lmm cat £120++.....	£32-36
83. 1940 3d : top left & right arrow B4's, bottom arrow pair, top left & both bottom corner B4's (also top rt corner vertical pair not counted in basic cat of £165) arrows and positional pieces worth a considerable premium mm/um.....	£35-40
84. 1937 6d type I, fine um B4 with V4 (" <b>molehill</b> ") - cat £320.....	£60-70
85. - ditto - fine m(margin only) strip of 3 with V1 (extended top to tree) on row1/10 and 1/12 - actually scarcer than the above!.....	£30-40
86. - ditto - pair with V1 on row 1/10 and top corner pair with the same on 1/12. both fine mm.....	£25-35
87. 6d Type I, 5 pairs including part bottom arrow pair, mm Cat £350.....	£35-45
88. - ditto - <b>the ladder flaw</b> in a fu B4 - much scarcer than mint.....	£70-80
89. 1939 1/- Issue 3 - fine lmm bottom arrow B4 with marked perf shift between stamps and margin. Cat £110++.....	£40-45
90. 1939 1/- Issue 3 : 7 mint pairs and a B4 with V2 (bottom arrow pair and an aniline shade um, the rest lmm. cat £605+.....	£90-100
91. 1939 1/- Issue 3 - a B6, B4 & pair with good V3, fine used cat £108+.....	£20-25
92. 1939 1/- Issue 3:- 2xB4's and a pair in marked shades, fine used. cat £90.....	£12-14
93. 1939 1/- Issue 3:- B4 and a pair (aniline) and Issue 4 (3 pairs) : fu, cat £108.....	£12-14
94. 1948 1/- Issue 4:- 5 pairs and a B4, one pair um rest fine lmm. cat £385.....	£45-50
95. 1933 5/- black & pale green, <b>watermark inverted</b> , fine mm cat £120.....	£15-20
96. 1933 5/- black & deep green, <b>wmk inverted</b> , a scarce shade such, mm.....	£20-26
97. 1933 5/- black & green, fu B4 with V1 (stop after "5", r.1/4), p/marked 1948.....	£12-16
98. 1933 5/- black & blue-green, fu pair with V5 (broken skei) and V6.....	£10-12
99. 1933 5/- Five B4's, shades, fu nice lot Cat £210+.....	£25-30
100. 1954 5/- grey & yellow green with V1 (extended limb "A"), fu, cat £100++.....	£30-35
101. 1939-44 10/- 2 pairs & a B4, shades, fu (the 1st electric blue & sepia).....	£7-10
102. - ditto - Five fu B4's, shades.....	£14-18

## **Booklets / booklet material**

103. 1921 1½d pane, wmk inverted, almost straight edge at bottom, vmm..... £12-15
104. 1921 3/- booklet complete (SAHB B4, SG B3), cat £500 : has "Inverted Watermark 27.2.22" in ms on front cover - the "1½d" rate on the inside & back covers is over-printed "2". Ideal item for display for someone who has the front cover..... £120-150
105. 1922 3/6 booklet (SAHB B5, SG B4) fine with 2x2d panes (wmk inv) remaining Cat £1400 Complete..... £80-100
106. 1927 Pretoria 1d booklet pane, part selvedge only, poorly cut with straight edge at bottom, largish portion of stamps above showing and small portion of stamps at right with enough showing they were **tête-bêche**. 1 stamp mounted. rare..... £70-90
107. 1935 2/6 advert booklet complete (SAHB B10, SG B9) Cat £350 - a scuff on the cover, slight even toning & some fox spots on gum of 1st 1d pane ..... £40-50
108. late 1940 2/6 booklet complete (SAHB B18, SG SB15a), fine, cat £180 ..... £45-50
109. early 1941 2/6 booklet complete (SAHB B19, SGSB17) (with 1½d panes) fine ..... £50-60

## **OFFICIALS**

110. 1928 set 3 2d (17.5mm spacing), SGO5, left & right inscriptional B4's, um..... £20-25
111. 1930 set 5 ½d - bottom right corner control B4 (plate 3), mm (SGO7) ..... £20-25
112. 1930 set 5 1d : B4 with control "B" & V8 (broken "L" r.16/11) and a marginal B4 with ovpt misplaced (across perfs), both fine mm. (SGO7) ..... £35-40
113. 1931 set 6 ½d ; right arrow B4 (Issue 1), stamps um ..... £20-25
114. 1931 2/6, SGO11, with V3 (dropped official), mm..... £25-30
115. 1931 2/6, SGO11, a good used pair, scarce. cat £190 ..... £35-45
116. 1934 2d, **watermark inverted**, SGO14w, an attractive used B6 (3 pairs), some creasing top pair and other small faults. Cat £570..... £60-70
117. 1939 2d indigo & violet, SGO23, fine lm and fu matched pairs (row 18/5&6) with stamp V39 "white leaf" on both. Cat £200+..... £35-45
118. A superb registered official envelope (size E10) sent by air from Pretoria to the Union Consul General in Tananarive, Madagascar, Franked a fine B4 2/6 (SGO18a) and strip of 4x 1/- (SGO25) + another 2/6 & 3x6d singles ..... £160-180
119. 1934 2/6 bottom right corner pair, fine mm SGO18a..... £8-12
120. 1947 2/6 blue & brown (SAHB set 21) mm [pair with stamp V2 (line across wagon row 3/1). - one perf stained at left..... £6-10
121. - ditto - fine lmm pair with V5 raised OFFICIAL on row 10/1 ..... £14-18
122. - ditto - fine lmm pair with V5 raised OFFICIAL on row 10/5..... £14-18
123. 1936 ½d set 12, marginal strip of 4 with "dropped official" on last stamps um SGO20 cat £150(++) ..... £28-35
124. 1939 1/-, SGO25, two fine mm pairs with good stamp Vs 3&4, cat £160+ ..... £28-35
125. 1940 10/-, SGO29, a fu B4 with single cds, cat £1000 ..... £150-180
126. 1948 5/-, SGO26, fine lmm pair with stamp V1 on row 1/4. .... £12-15
127. - ditto - a fine um marginal B4 ..... £30-35
128. 1944(?) 1½d with **diaereses** on 2d "E"s, SGO33a, an unusually fine used strip of 3 a pair cat £475 - nice Item..... £80-100
129. 1947 2d (SGO36a) with **diaereses** on both stamps, mm with a thin next to the hinge mark on left stamp Cat £700..... £60-70
130. 1949-50 ½d, SAHB O118, both cylinder B6's, lmm..... £12-15
131. 1948 10/-, SGO51, fine um marginal pair ..... £20-25

**Please note:- NO BUYERS' PREMIUM : equal bids will go to first received**

**Bids under 85% of lower estimate will not be entered**

**I will try & cope with maximum individual spend limits if required**

*(Editor's note: The ordering of the lots is somewhat mixed in order to minimise the space taken. However, I have provided a heading listing the lots on each double page spread to help the reader. Apologies if it takes more than a few moments to find any particular lot.)*

*Kings Heads—Lots 1 - 18*



Lot 1



Lot 8



Lot 6



Lot 10



Lot 13



Lot 2



Lot 3 (top block shown only)



Lot 4



Lot 5



Lot 9



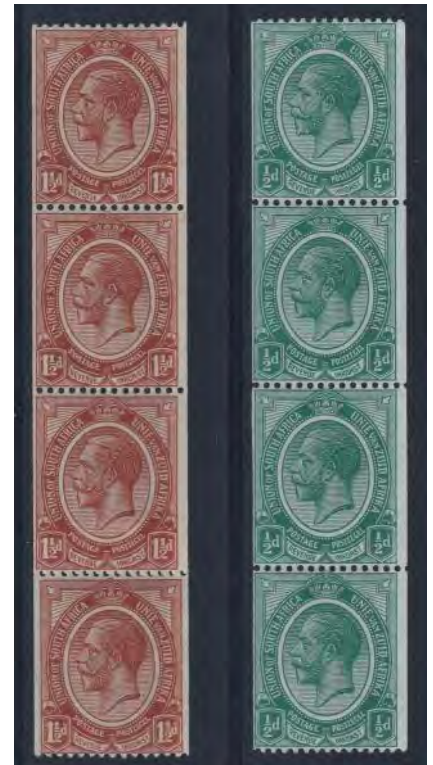
Lot 12



Lot 16



Lot 7



Lot 17



Lot 18



Lot 11



Lot 14

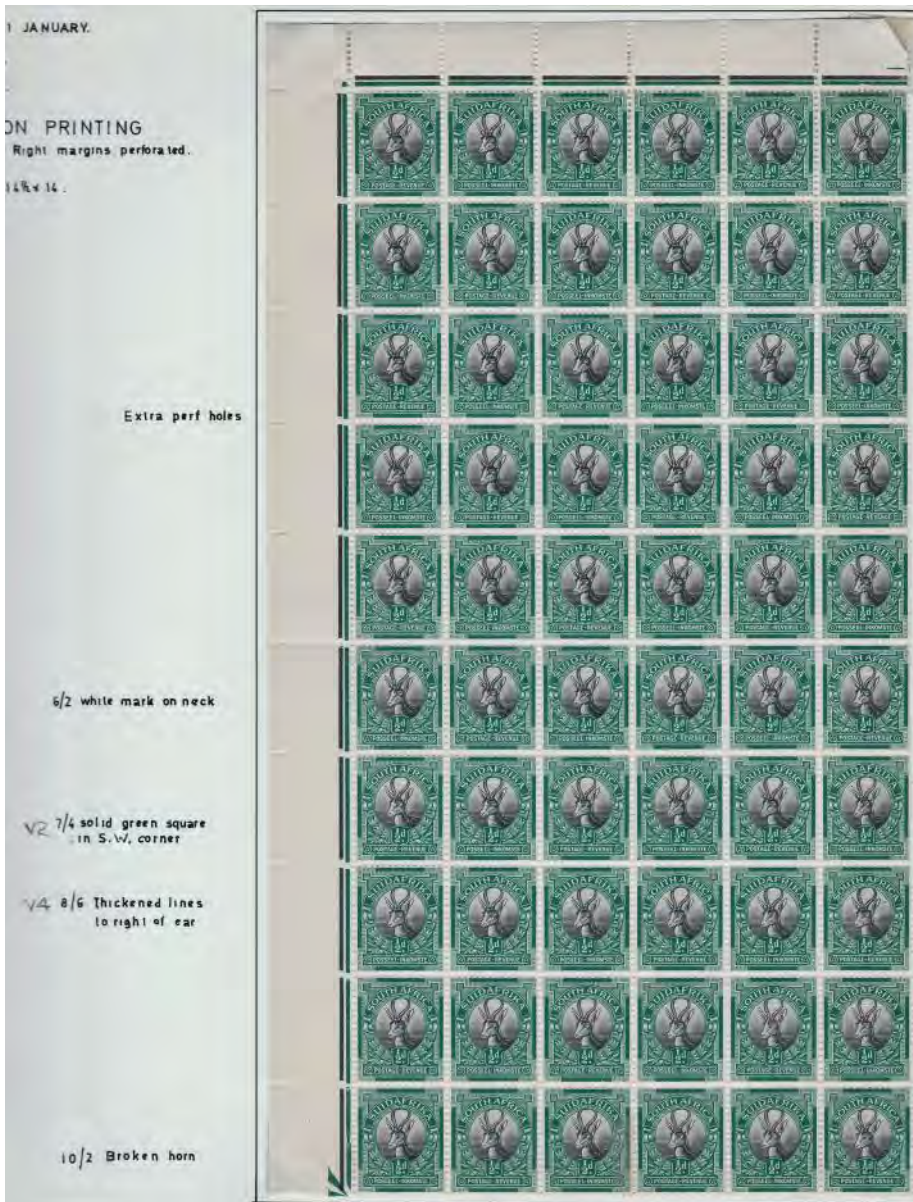


Lot 15

1926-30 London Pictorials Lots 19 - 36

Lot 19 (reduced to 60%)

Lot 21



Lot 25



Lot 29



Lot 30



Lot 20



Lot 26





Lot 27



Lot 22



Lot 24



Lot 28



Lot 23



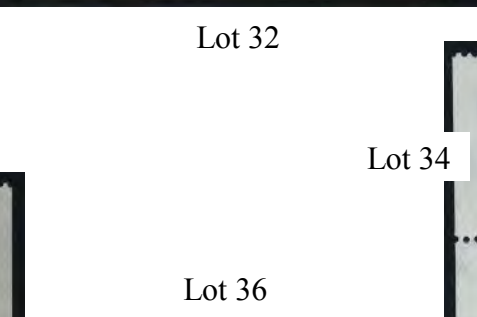
Lot 31



Lot 32



Lot 33



Lot 36



Lot 34



Lot 35



1926-30 London Pictorials (continued) Lots 37 - 39



Lot 38

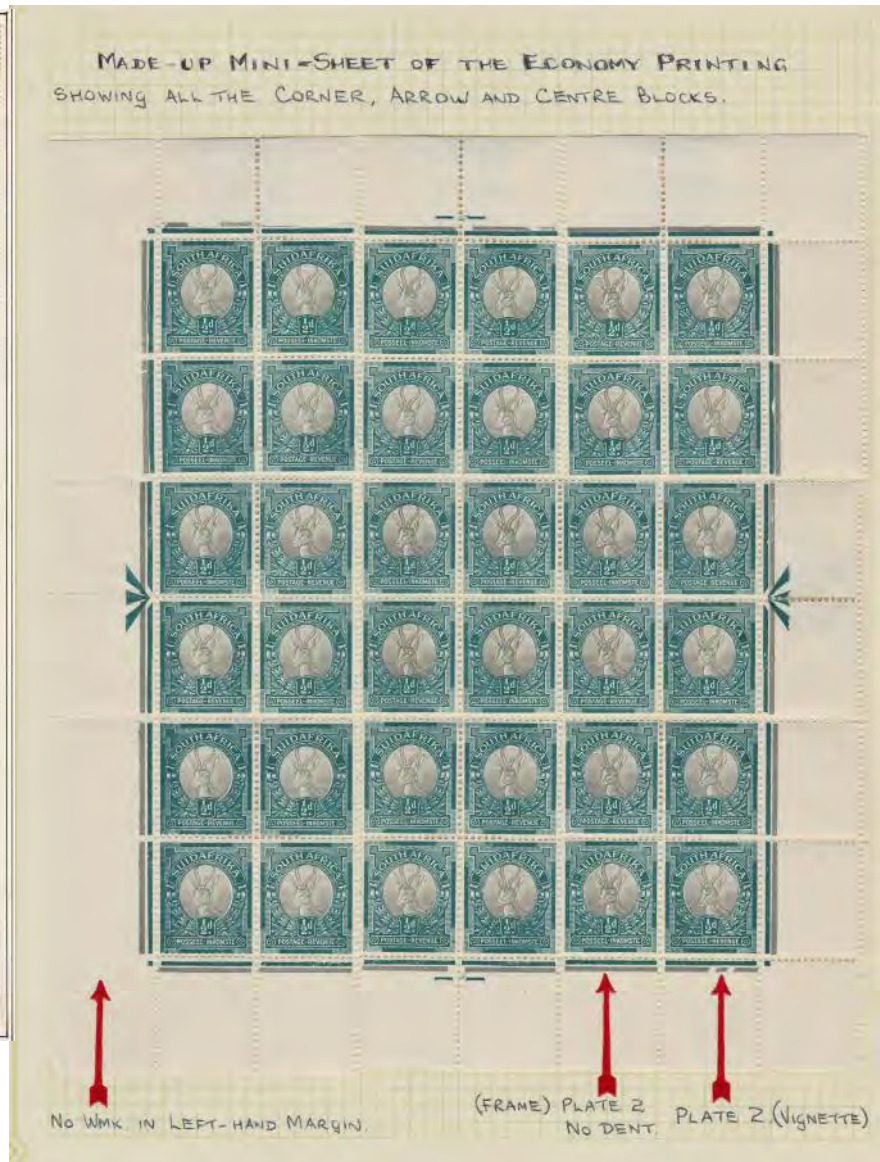
Lot 39

Lot 37

Pretoria typographed Lots 40 - 47



Lot 42 (reduced by 50%)



Lot 41 (reduced to 65%)



Lot 40 (reduced to 80%)

40



Lot 45



Lot 44



Lot 46



Lot 47



Lot 43

*Silver Jubilee Lot 50*



Lot 50—6d value only shown)

*Silver Jubilees (continued) Lots 48, 49 and 51, 52*

Lot 48  
(6d value  
only  
shown)



Lot 49

Lot 51 (reduced to 80%)



Lot 52



*1933 - 54 Hyphenated Rotogravure  
Lots 53 - 58*



Lot 54

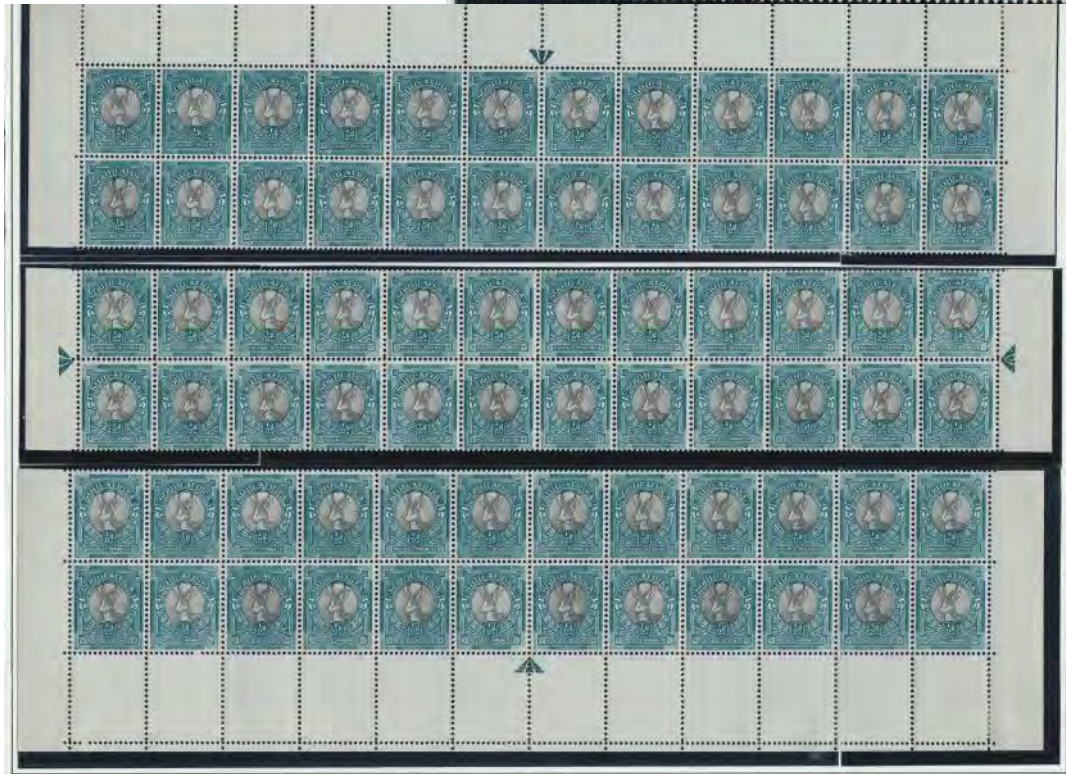
Lot 57  
(reduced to  
85%)





Lot 53 (reduced to 80%)

Lot 56  
(reduced to 95%)



Lot 58  
(reduced to 50%)

1933 - 54 Hyphenated Rotogravure Lots 59 - 64

Lot 63  
(reduced by  
50%)



Lot 62 (detail from 'rows'  
2 and 5 of block shown)

Lot 62 (reduced by 50%)

Lot 60



Lot 61 (reduced to 80%)



Lot 59



deep blue-green and olive-grey

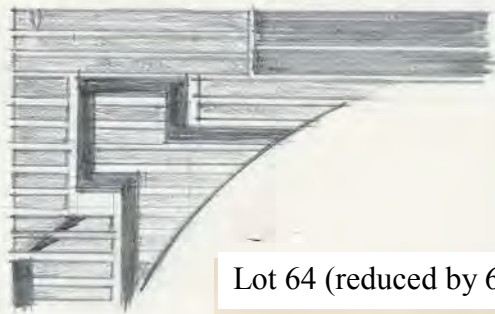


W/11 vert blackline through nose.



deep grey-green and silver-grey

QUADRUPLE NEGATIVE FLAW.



on every odd-numbered Afrikaans stamp of Issue 14. (see 15/11 and 9/11.)

Lot 64 (reduced by 60%)



1933 - 54 Hyphenated Rotogravure Lots 65 - 76



Lot 65



Lot 66



Lot 67 (reduced to 85%)



Lot 68



Lot 69

Lot 73 (reduced to 48%)



Lot 70



Lot 72 (reduced to 60%)



UPRIGHT WATERMARK

ISSUE 1

Lot 71

vw

200



V3 BULGE IN R. FRAME 13/2

V2 BROKEN CHIMNEY 11/6



V6 FLAG ON CHIMNEY 20/2



Lot 74

Lot 76



Lot 75



1933 - 54 Hyphenated  
Rotogravure Lots 77 - 83



Lot 79



Lot 77



Lot 78

Lot 80

Pale grey + purple 5/41

Grey + Dark Purple 13/41 Black sheet no.

10/5 10/6

Idem, varieties

vertical line between F and R of AFRIKA

vertical line through S of South (row 20 nr 6)



Lot 81  
(reduced by 50%)

2. May 1941 Army & Air Force



By some 4000



Normal Design

Lot 82

STATE 1. A blue emerald  
between rows 4 & 5 / 6.



Black Serial No 1940.

(Below blocks also show 4th row dot  
below 2. upper frame Row 3/5 & dot in  
left margin Row 4/5)

STATE 2.

emerald extends  
upwards from 5/6  
to form V shaped  
lines 1, 2 & 3/6.



Row 1/6

Row 2/6

STATE 3.

as 2 but with  
extensive additional  
retouching.



Red Serial No 1947 - extensive  
retouching of frame plate. especially  
upper part of sheet & especially including  
name plate, name plate surding & lower lines.



Lot 83 (reduced by 50%)

1933 - 54 Hyphenated Rotogravure Lots 84 - 100



Lot 85



Lot 86



Lot 84



Lot 88



Lot 87



Lot 89



Lot 90  
(reduced to  
60%)



Lot 91 reduced to 80%



Lot 95



Lot 96

Lot 92



Lot 93



Lot 94 (reduced to 90%)



Lot 99

Lot 97

Lot 100

Lot 98

1933- 54 Hyphenated  
Rotogravure Lots 101 - 102



Lot 101



Lot 102

Booklets/Booklet Material Lots 103 - 109



Lot 103 (reduced to 90%)



Lot 104 (reduced to 90%)



Lot 105 (reduced to 90%)



Lot 106 (reduced to 90%)

Lot 106  
(detail)



Lot 107 (reduced to 80%)



Lot 108 (reduced to 90%)



Lot 109 (reduced to 90%)

Officials 110 - 117, 119, 120



Lot 110



Lot 111



Lot 112



Lot 113



Lot 114



Lot 115



Lot 119



Lot 117



Lot 120



Lot 116

Officials 118, 121 - 130



Lot 118 (reduced to 55%)



Lot 121



Lot 122



Lot 123



Lot 124



Lot 125



Lot 127



Lot 128



Lot 129



Lot 131



Lot 130

## Voortrekker Centenary Trek - Aug - Dec 1938

Pretoria Trek			Blood River Trek		
Origin	Date	Origin	Date	Origin	Date
Cape Town-25604	08-Aug	Kroonstad-995	30-Oct	Vegkop-2713	01-Nov
Weenen-?***	04-Aug	Edenville-121	31-Oct	Lindley-351	02-Nov
Philadelphia-?	09-Aug	Vegkop-3348	01-Nov	Senekal-263	03-Nov
Stellenbosch-1915	09-Aug	Petrus Steyn-?	02-Nov	Paul Roux-95	04-Nov
Paarl-1098	10-Aug	Heilbron-217	02-Nov	Bethlehem-279	07-Nov
Wellington-773	11-Aug	Kopjes-89	03-Nov	Kestell-113	07-Nov
Breerivierstasie-29	12-Aug	Vredefort-74	04-Nov	Harrismith-5	08-Nov
Worcester-2122	13-Aug	Parys-347	05-Nov	Retiefklip-1085	09-Nov
Robertson-612	16-Aug	Potchefstroom-1402	12-Nov	Bergville-115	10-Nov
Montagu-306	17-Aug	Ventersdorp-234	15-Nov	Winterton-114	12-Nov
Bonnievale-80	18-Aug	Lichtenburg-288	19-Nov	Estcourt-75	15-Nov
Swellendam-1428	22-Aug	Zeerust-417	22-Nov	Mooi River-?	16-Nov
Zuurbraak-74	22-Aug	Groot Marico-211	23-Nov	Howick-?	17-Nov
Heidelberg(Cape)-743	23-Aug	Zwartruggens-139	25-Nov	Kranskop-?***	31-Oct
Riversdale-585	24-Aug	Rustenburg-553	26-Nov	Pietermaritzburg-1290	21-Nov
Albertina-133	25-Aug	Magaliesburg-154	30-Nov	Durban-603	23-Nov
Mossel Bay/Baai-844	26-Aug	Krugersdorp-499	30 Nov/01-Dec	Wentworth-47	26-Nov
Hartenbos-266	30-Aug	Roodepoort-106	02-Dec	New Hanover-59	28-Nov
Groot Brakrivier-203	31-Aug	Germiston-222	05-Dec	Greytown-49	29-Nov
George-1116	02-Sep	Alberton-12	06-Dec	Muden-84	30-Nov
Oudtshoorn-?	05-Sep	Benoni-235	06-Dec	Weenen-437	03-Dec
De Rust-189	05-Sep	Brakpan-124	07-Dec	Bloukrans-821	03-Dec
Port Elizabeth-?*	08-Sep	Vereeniging-155	07-Dec	Colenso-77	05-Dec
Willowmore-591	12-Sep	Heidelberg(Tvl)-235	08-Dec	Ladysmith-7	06-Dec
Uitenhage-?***	10-Sep	Jameson Park-?***	08-Dec	Danskraal-1385	07-Dec
Aberdeen-331	15-Sep	Boksburg North/Noord-26	09-Dec	Elandslaagte-?***	08-Dec
Graaff-Reinet-3011	20-Sep	Boksburg-14	09-Dec	Waschbank-?***	09-Dec
Pearston-146	22-Sep	Springs-303	09-Dec	Dundee-86	10-Dec
Somerset East/Oos-173	24-Sep	Johannesburg-1813	10-Dec	Jagersdrift Station-?***	12-Dec
Slagtersnek-25861	26-Sep	Jeppesdorp-52	10-Dec	Utrecht-34	12-Dec
Cradock-573	01-Oct	Pretoria-?***	13-Dec	Blood River	14/16 Dec
Hofmeyr-230	04-Oct	Burger Kamp	14/17-Dec	47 Blood River	16/12/47
Bulhoek-11330	10-Oct	Voortrekker Mnmt	13/17-Dec		
Steynsburg-2148	11-Oct				
Burghersdorp-476	12-Oct				
Aliwal North/Noord-682	13-Oct				
Rouxville-278	14-Oct				
Smithfield-405	17-Oct				
Wepener-72	18-Oct				
Dewetsdorp-381	19-Oct				
Thaba 'Nchu-149	20-Oct				
Bloemfontein-3100	23-Oct				
Brandfort-409	24-Oct				
Reddersburg-?	25-Oct				
Winburg-1630	26-Oct				
Ventersburg-179	27-Oct				

### SWA Origin

Windhoek 18-Oct

Updated: January 16, 2020

Contact: siegmayr@yahoo.com

\* HJ Klopper viewed the PE mayor as Afrikaner unfriendly, so PE covers were not carried by the wagons - no machine cancel

\*\* Sidetrek - with machine cancel\*\*

\*\*\* No machine cancel

Cover numbers from Hasso Reisener's definitive text

# Argyll Etkin Limited

**Specialists in all aspects of philately with particular interest in Southern African territories. When in London, please call in to inspect our stock. We are open Monday - Friday, 9 - 5.**

Our webstore now offers 1000s of items of stamps & postal history, immediately available  
[www.argyll-etkin.com](http://www.argyll-etkin.com)

Our twice-yearly **AUCTION SALES** have proved highly popular with collectors & dealers for both buying & selling. A Specimen catalogue of a recent sale will give details. Finally - having traded in London for nearly 40 years, we are still keen to make outright purchases of suitable material.

**1 Wardour Street, London W1D 6PA**

**Tel: 0207 930 6100 Fax: 0207 494 2881**

**Email: [philatelists@argyll-etkin.com](mailto:philatelists@argyll-etkin.com)**



**P.O. Box 16746, Birmingham, B35 9DQ Tel. 0121 747 4752**

*My eBay shop is now open, search for*

## **Africastamps-online**

**NEW ITEMS added every month, with varieties & "the unusual"**