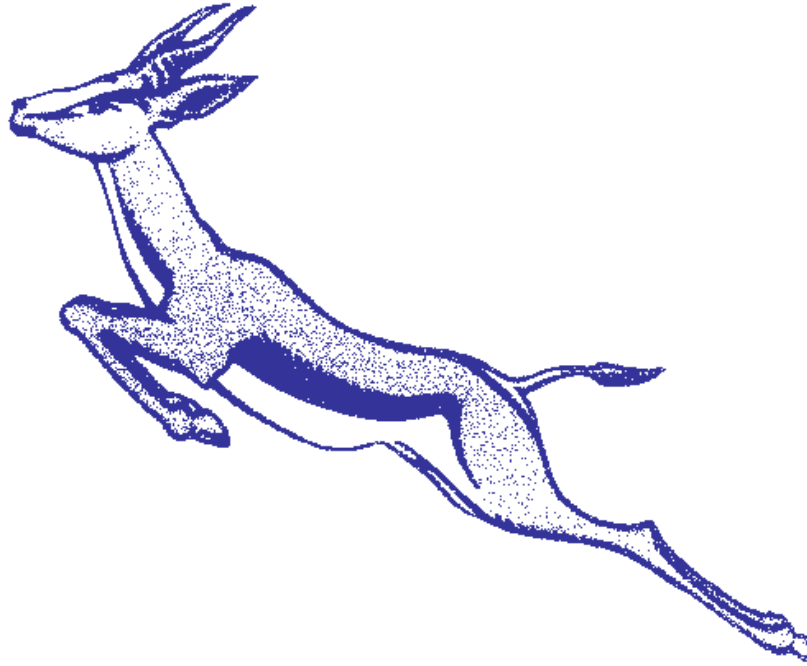


THE SPRINGBOK



SOUTH AFRICAN COLLECTORS' SOCIETY QUARTERLY

Vol. 58

No. 2

Apr/Jun 2010



HARMERS
ESTABLISHED 1918
Philatelic Auctioneers, Experts and Valuers

South African stamps feature regularly in Harmers specialised "All World" Auctions.

For further information on buying and selling opportunities please contact us at the address below.

Harmers, No. 11, 111 Power Road, Chiswick, London W4 5PY
Tel: 020 8747 6100 Fax: 020 8996 0649
info@harmers.com www.harmers.com





The Springbok

© South African Collectors Society, 2010

ISSN: 0955-6753

Vol. 58 No. 2 Whole No. 310

Founded 1947

Member:

Association of British Philatelic Societies

The Philatelic Federation of Southern Africa

We are also a sponsor of the Stamps in Schools Project

Web Site: http://www.ukphilately.org.uk/Societies/sites_we_host/SAfrica.html

Contents

Articles

	Page
Notice of Regional Meeting Salisbury	27
SACS Display at Spring Stampex	28
Can your collection help ongoing research?	Bas Payne 30
Military Cachets used on Robben Island	Jim Findlay 30
1948 Royal Silver Wedding Issue	Michael Molineaux 30
Query Spot. Response to Cross of Hope Cover	Godfrey Mellor 31
Help on Censorship of SA Mail during WW2	David Lee 32
Feedback on the Diamond Dies	Patrick Williams 33
A New Discovery	Tony Howgrave-Graham 33
Kalahari Mail	John Ledington/Mike Berry 34
Official Variety query from Murray Payne	Tony Howgrave-Graham 35
Feedback on Colin Faers "Adapted German Postmarks"	Tony Howgrave-Graham 35
Comments on the new SA Colour Catalogue	35
Report on the May 2010 London Meeting	John Shaw 37
The Bantam War Issues	Eddie Bridges 40
Society visit by the Olivers	John MacLennan 51

Regular Features

Events for your Diary-2010	26
From the Editors desk	26
Membership Matters	36

Advertisers

Harmers	FP		
David Loffstadt	29	Otto Peetoom	27
Philatelic Friends	32	Argyll Etkin	IBP
AfricaStamps.co.uk	29	Stephan Welz/Sotheby's	BP
Paul van Zeyl t/a as Rand Stamps	39		

The Springbok is published quarterly for the benefit of Members of the South African Collectors' Society. It is not available to non-members. Contributions in the form of letters, notes, reports of SA related activities, articles, etc., are always welcome and should be sent to the Hon. Editor. All correspondence including a SAE will be acknowledged.

Editor

Eddie Bridges
The Laurels
2 Short Lane
Thorpe Malsor
Northamptonshire
NN14 1JT
U.K.

Editorial Panel

E. Bridges
C. Oliver
J.L. Shaw

Events for your Diary 2010

London Meetings commence at 1.30 pm
Carlisle Meetings commence at 10.00 am

20th Feb.	SACS London meeting	Subject: Maritime Mail
24-27th Feb	<u>SACS display at Stampex</u>	
27th Mar	SACS Carlisle meeting	Subject: Victorian & Edwardian SA 1860-1910
29th May	SACS London meeting	Subject: Hyphenated Pictorial high values [6d +]
5th Jun.	SACS Leicester meeting	Subject: Open meeting
7th Aug.	SACS Salisbury meeting	Subject: All day open meeting
*Sep.	SACS Carlisle meeting	Subject: Abel Trophy competition
25th Sep. .	SACS London meeting	Subject: SA in WW II
27th Nov.	SACS London meeting	Subject: Open meeting

* Date still to be confirmed

12-14th Nov. Southern African Societies Convention Falstaff Hotel Leamington Spa

Other Events for 2010

24-27th Feb.	Spring Stampex, Business Design Centre, Islington, London.
25-27th Feb.	Spring Philatex, Royal Horticultural Halls, Vincent Sq. London
5-6th May	Philatex Extra, Royal Horticultural Halls, Vincent Sq. London
8-15th May	London 2010 , Islington
12th June	Swinpex in Swindon
22-25th July	British Philatelic Congress at Kenilworth, Warks.
16-19th Sep.	Autumn Stampex, Business Design Centre, Islington, London
27-31st Oct.	Jo'burg 2010 in Sandton, Johannesburg
4-6th Nov	Autumn Philatex, Royal Horticultural Halls, Vincent Sq. London.

**For further details, please contact the secretary. We have several joint meetings in the year.
Please support these events.**

From the Editors Desk

As we approach the half year mark, I am glad to report that your editor is on the road to recovery and finding some renewed enthusiasm for philately. (too many projects and too little time!) I think this sounds familiar to many collectors. What is sad is that many collectors start projects and unfortunately pass on before they are completed. (see the appeal on page 32 from David Lee) He is now trying to finish what our late member Chris Miller from the Civil Censorship group started. My illness early this year brought home to me how much I have lying around in half finished projects and the mortality of a human being. This has motivated me to become a little more organised. I have bought another filing cabinet and started filing all the research notes, part manuscripts, copies of articles etc. into organised folders. Now I need to make sure that it is passed on to someone interested in finishing it, if I have not done it by the time I close my albums and not thrown out with the rubbish as has happened countless times in the past as our family members do not know what we have been up to!

Enough of the morbid stuff. London 2010 came and went with great fanfare and success. Brian Trotter and his team are to be congratulated. Many of our members exhibited and achieved fantastic results. More later on in the journal.

There is a regional meeting in the South early August. Please support this if you can.

Happy reading.

Eddie Bridges

Regional Meeting—Salisbury 7th August 2010

A regional meeting has been arranged by Nick Arrow near Salisbury and all members in that region who can support this meeting are asked to do so.

Venue: The Scout Hut in Harnham, near Salisbury. (The Scout Hut in Harnham is well known in local philatelic circles as an excellent place for a meeting.)

Time: Proceedings to start at 11:00

Lunch: Will be held at a local pub close to the venue

Invited display to be shown by Tony Howgrave-Graham (provisional)

Please bring along a few pages of material to show and talk about after lunch.
It is envisaged that the meeting will finish around 16:00 to 16:30

If you need any further info, please contact Nick Arrow on Mobile Tel: 07973 253951

This should be a good meeting so please try and attend.

South Africa South West Africa

Fully illustrated lists available for the above countries. Two lists available for South Africa, one featuring better single items, sets and varieties and the second, Postal History. If you would like a copy, please contact:

OTTO PEETOOM

ORMSKIRK STAMPS

Rectory Road, Roos, Near HULL, East Yorkshire, HU12 0LD England

TEL: 01964 670239

INTERNATIONAL +44 1964 670239

FAX: 01964 671204

+44 1964 671204

Website: www.rhodesianstamps.net

For those with other interests, we have separate lists for The Rhodesias including Nyasaland; Basutoland, Bechuanaland & Swaziland, East Africa, Tanganyika, Zanzibar & K.U.T. and Nyasaland Field Force.

SACS Display at Spring STAMPEX

The display went off reasonably well and several new members were recruited. A commemorative booklet was printed for the occasion and a copy for each member is distributed with this issue of *The Springbok*.

The display was opened by Lord Selborne who is a descendant of the High Commissioner to South Africa who played a significant role in facilitating the establishment of the Union of South Africa. More details in the booklet!

I would like to thank all those who displayed material. A wide range of philatelic material from the Union period was on display. I would also like to thank all those who helped with the arrangements, in particular, Chris Oliver, Chris Board who managed to arrange for Lord Selborne to open the display and John Shaw for hosting the lunch for Lord Selborne.

A special thanks to Brian Trotter for making his team of back room people available to help with mounting the displays, taking them down and getting them all back to their owners. (this was used as a small dry run for the upcoming International held in May at the same venue.)



Just after the opening



Lord Selborne with Ian Shapiro of Argyll Etkin



Lord Selborne with Chris Board and our Chairman John Shaw

Photos by Chris Oliver

BRITISH EMPIRE SPECIALISTS QV-KGVI INCLUDING SOUTH AFRICA

**Sets, Single items, Postmarks, Varieties, Revenues,
Postal History, Postal Stationery.**

**If you have a wants list please contact us
We publish a buy/bid catalogue of British Colonial
issues and a Postal Auction Catalogue which covers
the whole world, these catalogues are produced three times a year,
if you would like copies please contact:**

DAVID LOFFSTADT

**P O Box 107 Bromley, Kent BR2 8ZA
Tel: 020 8462 7185 Fax: 020 8462 7387
E:mail davidloffstadt@yahoo.co.uk
Member of PTS for over 30 years.**



**New website offering fine
Southern Africa stamps and
specialised items.**



Email: info@AfricaStamps.co.uk

Can your collection help ongoing research?

If you are attending the Salisbury meeting on the 7th August, Bas Payne will welcome sight of any of the following or can help in further research, he would be grateful.

Good examples of Union or pre-Union parcel post marks or official parcel labels

Sheet number blocks of first Union bilingual definitives (SG 42-49, 54-64, 114-122 and related issues)

good examples of Transvaal double-circle postmarks dating between 1894 and 1902

good examples of Union and pre-Union machine postmarks (either with slogans or with lines) pre-1945

If you have any of the above material please bring them to the meeting so that they can be noted and photos can be taken as needed. This can be done on the day - there won't be any need to lend the material to anyone. Any help will be profusely acknowledged ...

Alternatively if you cannot attend the meeting, you can send scans to Bas Payne at bas.payne@gmail.com

Military Cachets used on Robben Island

George Cafetzoglou (a South African Dealer and Collector) and Jim Findlay of the WW2 Study Group are compiling a listing with illustrations of World War 2 military cachets used on Robben Island.

To date they have recorded eight but feel there must be more. When one reads the history of Robben Island during the War, there were many servicemen and woman being trained on the Island.

If you have any cachets used on the Island during the war, please let Jim have a scanned copy (preferably JPEG, 300dpi) with size measurements and date of use.

Please also record any "Passed by Censor" cachets (letter size, length of cachet, English only or bilingual as it will be useful to include these.

Jim Findlay can be e-mailed on agrecon@telkomsa.net

1948 Royal Silver Wedding Issue

Michael Molineaux.

I am relatively new to collecting South Africa, as well as being a new member of the Society. I have a question that I feel sure that someone in the Society can answer and I thought that you might be willing to put it in the Springbok for me.

"In the November/December 1949 issue of the West End Philatelist Dr. K. Pennycuik stated that it is possible to plate every position of the 1948 Royal Silver Wedding issue and listed all the identifying characteristics of each stamp in his article.

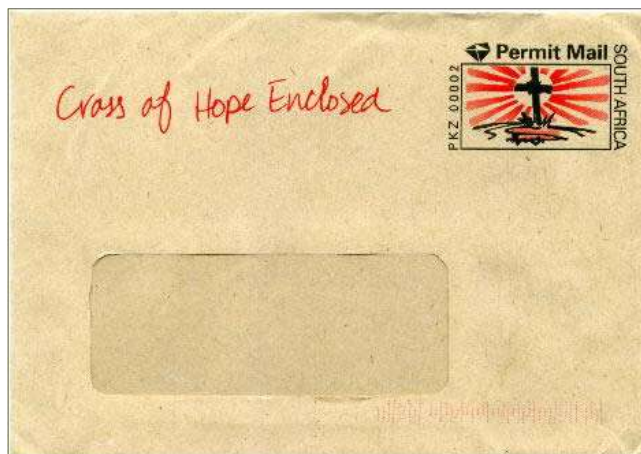
Unfortunately, probably due to a printing error, no characteristics were listed for the stamp in the position Row 5 Stamp no.6. The West End Philatelist did not publish any correction of this omission and I have not seen it in any subsequent copy of the original article.

Whilst this will not matter very much to those who collect mint stamps, as pairs and multiples should give them the position, if you only collect used stamps then multiples, or even pairs, are not so readily available. Can anyone who has the stamp in question give me its identifying characteristics, please?"

Michael can be contacted at michaelmolineaux212@btinternet.com

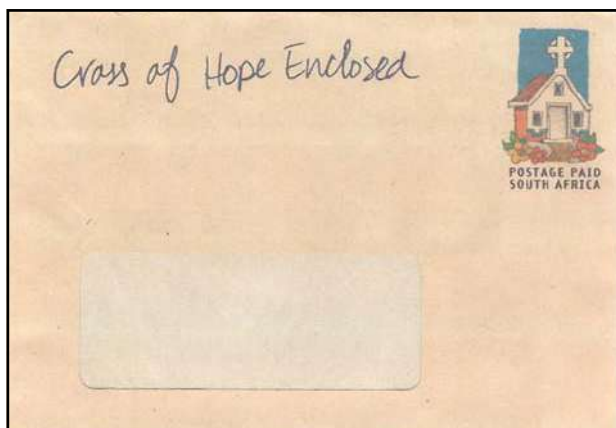
If you do not have access to e-mail, please let your Editor have the information (on any of the above) who will pass it on.

Query Spot

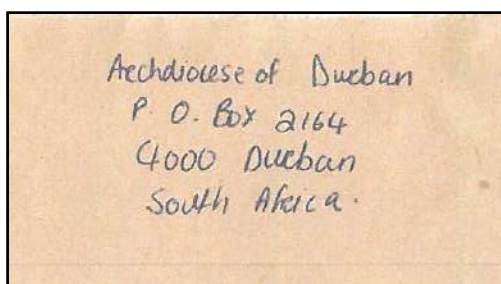


David Page sent in this cover with the question: What is it and does anyone know what organisation issued these. Maybe one of our South African members can help?

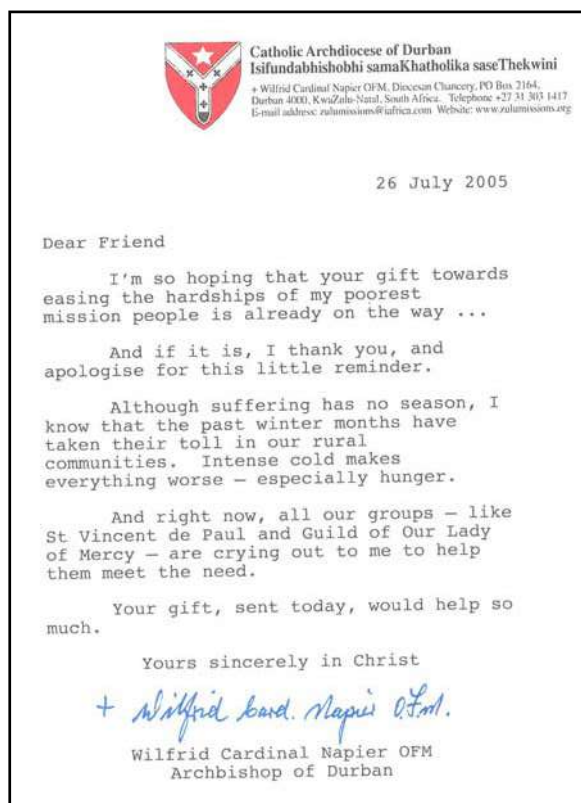
Answer to the above which appeared in the previous issue



Similar envelope to the one above



Reverse of the envelope with the senders address



The enclosed letter

Godfrey Mellor sent the above in response to the query from David Page. It is mostly self explanatory. The stamp impressions on the envelopes appear to be designed by the mission and the envelopes privately printed. This is apparently allowed in South Africa under the permit mail system.

CAN YOU HELP PLEASE

---oOo---

CENSORSHIP OF SOUTH AFRICAN MAIL DURING WWII

The two published works on this subject are by JH Harvey Pirie in 1953 and John Little in 2000. Before his death, Chris Miller was, with the agreement of John Little, working on a new Study on this subject that would include a lot of new material. He was working closely with Tom Mullins who lived in South Africa but who has, unfortunately, also passed away

A questionnaire based on Chris and Tom's papers is being prepared and the purpose of this notice in the Journal is to ask for help please from anyone who has any covers censored by the South African authorities, or who has a general interest in this subject.

If you will contact me at –

davidlee8@btinternet.com or telephone 01273 589 455

or 18 Rosemary Close, Peacehaven, East Sussex BN10 8BY

Once it is available, I will send you the questionnaire for completion and return. Although it will be several pages, hopefully it will not be an onerous task to complete it. And the end result – if we can get enough responses – should bring our knowledge of this subject right up to date and make collecting the covers more interesting.

LOOKING FOR THE UNUSUAL (OR THE USUAL)



1892-4 Cape of Good Hope ½d slate/white Postal Stationery Envelope with addit. 1d KEVII red tied by manuscript WALVIS BAY 5/7/09 in black pen, to Swakopmund, with very neat arrival postmark 12.7.09.

Similar material on our regular postal auctions. Auction Catalogues viewable on the internet at: www.philatelicroads.com or printed catalogues available on request.

Email us at: info@philatelicroads.com
P.O. Box 26456 Hout Bay 7872 South Africa



PHILATELIC FRIENDS

STAMP AUCTIONEERS & DEALERS • HOUT BAY • SOUTH AFRICA



Feedback on the Diamond Dies in Vol. 58/1 p.8.

Patrick Williams has written in with the following comment:

I agree that these diamond-shaped markings are accountancy census marks. I believe they are applied to mail coming into the UK from abroad in order to calculate the amount due to the UK GPO from another PO for the transmission of mail within the UK emanating from another country.

It seems plausible that this would be under UPU rules - probably on a date specified and would be on a sample basis from which an amount would be calculated as due to the UK GPO for handling costs incurred on say, mail from SA for a given period. I have seen a diamond applied to mail from New Guinea to Manchester in the 1920's.

It would be unfair to expect the destination country's PO to receive no part of the postage paid by the sender. The sea/air carrier is certainly not going to do their part for free.

A New Discovery

By

Tony Howgrave-Graham

It's rather exciting to report new things even if I can't claim to have discovered this one. I was sent the illustrated item for inclusion in the Leamington auction. It is a vertical pair ½d springbok from the 1926 London booklet with **watermark sideways!** The 1d is known from the same booklet, albeit very scarce, so I suppose the possibility of the ½d existing was always there. This item, I gather, was in a collection formed in the '60's-70's and simply labelled "unrecorded". Whoever formed the collection didn't, as far as I can see, report it, or seek further advice regarding it. This will have cost him, or her, as it failed to get a mention in the auction description and the whole lot went cheaply.

The item was used at Barberton on 21 October 1927 and is the right vertical pair of the booklet pane – so there must be a minimum of 10 other stamps from this booklet alone. It seems remarkable that it has remained undiscovered for 83 years. Anyway it forms a currently unique item and will be one of the highlights of the Leamington auction.

(postscript – this short was written before last year's Leamington auction. The item attracted interest from Stanley Gibbons but was knocked down to a room bidder for £1100)



Kalahari Mail

At the June Leicester SACS meeting John Ledington showed a 1929 SWA cover privately cancelled "Oldsmobile Kalahari Mail." The signatures are said to be those of the three drivers. It aroused considerable interest, but no new information.

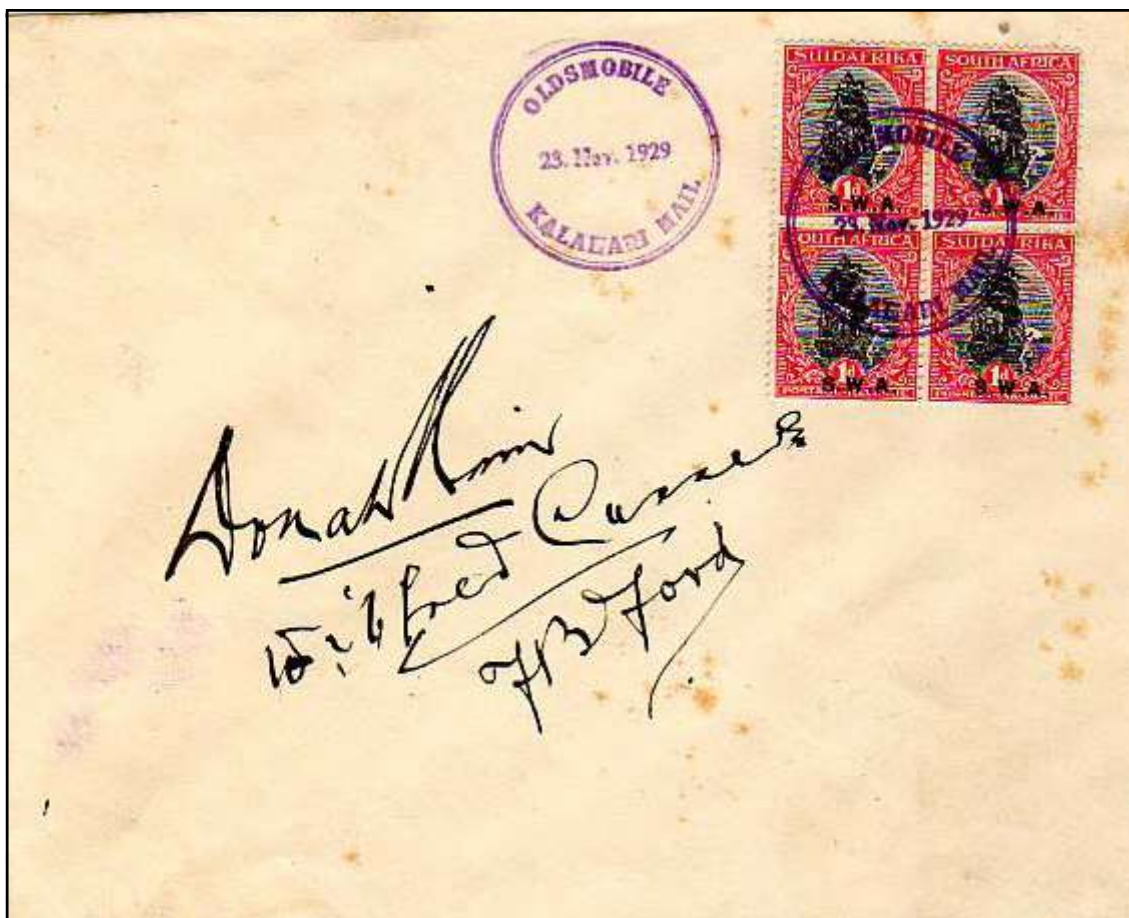
It is understood that this was reported in the local press, and SA Philatelist at the time.

One might assume that this was a private attempt to service an area with poor or non-existent mail service. In those days SWA had very basic and rough dirt roads, with vast distances between locations.

Does anyone know any details of the service? Did it succeed, and if so for how long? What area did it cover? How did the service sit with the established Postal authorities?

Any information would be gratefully received.

*The above was submitted by Mike Berry on behalf of John Ledington. Any further information to your **Editor** please.*



The cover shown by John Ledington

Official Variety

Dickon Pollard sent the scan below with the following comment:

A customer has sent a scan of this pair. Looks to be cognate with the block and strip in Ian Matheson's collection, but he does not have a used pair. My feeling is that the omission of 'OFFISIEEL' is quite an important error and should probably be listed by SG and ourselves.

Your **Editor** forwarded this to Tony Howgrave-Graham who is our local "Officials" man. His reply is as follows:

It's a well known variety occurring on the 1949 overprinting of Issue 9 of the 2d. It's listed in the '86 handbook where it's valued at "100R" - a rule of thumb guide is that one can turn the "R"s into "£"s for desirable items. You're quite right that used is scarcer than mint - but possibly not more desirable - and also right in that the pair, coming from the right vertical rows 5&6 means that the left Offisieel is on row 4 and therefore absent. Whether this makes it more desirable than the rest of the sheet which appears to have a narrow spaced ovpt with Offisieel right of Official, is debateable.



Feedback on Colin Faers' "Adapted German Postmarks"

Tony Howgrave-Graham has provided some additional information as follows:

re Omitara - it isn't the only use of an unaltered German postmark (he shows Tsumeb, and there are several others) - and re Tsumeb, he mentions that "it's unknown" when it became a civilian office. After the surrender all offices remained under military control until 1 October 1915 when they all became "civilian". This didn't change much on the ground as many of the postmasters stayed on in the same post offices.

New South African Colour Catalogue

Max Whitlock reports that the numbering has been changed in the South African section from 1992 onwards. This might cause problems in identifying items in auction catalogues if the relevant catalogue is not mentioned. The increased cost (£52) has also put many prospective buyers off.

Tony Johnson has also commented that he has already had some problems in the packets due to this numbering change.

A further article regarding this has appeared in the SA Philatelist by Paul van Zeyl regarding the number changes.

This is similar to the number changes made from the old Union Handbooks when the 1986 Definitive edition appeared. More new discoveries in the Union period will need a few adjustments again. I guess that these sort of issues will be with Catalogue editors for always.

You have been warned! Check which Catalogue is referenced if you have a discrepancy in the numbers!

Membership Matters

By Chris Oliver

We welcome back:

Ian Hodgson	896	Plymouth
Tom M. Lemon	934	Rainham Essex
Anthony D. Robinson	1033	Middlesex

We welcome new members:

Hugh J. McMackin	1142	Los Angeles, Ca. U.S.A.
Jon Aitchison	1143	Bishop's Stortford,
Andrew Alison	1144	London
Ken Southall	1145	Ipswich, Suffolk
Joseph Lieberfreund	1146	Perth, Western Australia
John R. Bell	1147	Pevensey, East Sussex
Roger Enskat	1148	London
Narendhra Morar	1149	West Grinstead, West Sussex
John Bigham	1150	Lynford, Thetford, Norfolk

Twenty members have not renewed their subscriptions for this year yet. Reminder notes to them are enclosed with this Springbok. Further issues will not be sent until payment is received.

We are sad to report the death of Jamie Gale [640] who had been living in ALICANTE, SPAIN in recent years.

Auction

Our new Auctioneer, Nick Arrow has reported that the auction went off reasonably well. He had a few minor hiccups, but this is to be expected for someone taking over the job for the first time. We thank Nick for his efforts.

Packet Secretary

As I write this we have 11 packets circulating which is good. However, 8 of these are now on their second circuit so they will dry up before too long. If anyone has enough material to make up some new books I would be grateful - I need at least 8 for a packet so it could be a number of you!

I have been asked about obtaining books for this purpose. I will order a bulk purchase so if anyone needs any I can let you have them at cost. Please contact me on 01296 661342 or tonyjohnson26@btinternet.com.

While most people are letting me have the purchase slips even if they take nothing, either by post or email, a few of you aren't. Please ensure you do as it enables me to check that packets haven't gone astray and it is required by our insurance. Also, please double check the value of any items taken and the sum total of all of them carefully before sending me your remittance. I have had a number of cheques that are short of the total amount by careless adding up which means I have to contact people to ask for the balance - time consuming for all of us!

If any of you have email addresses that haven't been given to Chris please let us have them. It is a very convenient way for me to contact you for any queries to do with the packet.

Tony Johnson

Report on the May 2010 Meeting In London

By John Shaw

This was our second scheduled meeting at the Calthorpe Arms public house and, this time, with my knees giving me gyp, I decided to travel by car.

Those attending were John Archer, Eddie Bridges, Tony Howgrave-Graham, Tony Johnson, Nicholas Lindstrom, Christopher Oliver, David Osborne, and John Shaw. All voiced how pleased they were with our Stampex Village Green display and those involved in organising this, not least Eddie Bridges, deserved the sincere thanks of the society. London 2010 is also now behind us, and our next major events are the Salisbury and Leicester regional meetings, the Leamington conference in November, and last but not least the Union centenary exhibition in South Africa. I know several of us are hoping to get there.

The theme of this meeting was the 6d to 10/- hyphenated definitives and Nicholas Lindstrom started the displays with a discourse on the state of the rotary blade, this being a blade on the printer that cuts the long print roll into sheets as an integral part of the printing process; this blade cuts, as the printer rolls and is, thus, slanted. The rotary blade is not to be confused with the guillotine which is used, away from the printing process, to cut the printed sheets into panes. Nicholas showed several bottom marginal pieces showing irregular cuts, with the position of these "flaws" replicated on different values. It is a most interesting study which will, hopefully, result in an article in the Springbok.

John Shaw then showed the 5/- ox wagon and 1/- gnus stamps, the former also with official overprints and including all the listed flaws and some, as yet, unplated flaws. Many, but not all, of the flaws were shown with both upright and inverted watermarks. There was a particularly interesting flaw on one of the officials, a slug mark from the overprint forme which was plated as R19/2. For the 1/-, there were complete arrow blocks for all issues, 3, 4, 5 and 6. Issue 4 is known as the "brown arrow" issue, the only occasion when the arrows were printed in the colour of the centre and not that of the frame. (one must of course make the exception for the hyphenated 1d issues 4a and 4b but these are exceedingly rare and it is questionable they should be described as normals). Interesting items here were positional pieces from issue 3, both with and without V2, the thin vertical blue line through the vignette; this is an occasion when the stamps without variety are scarcer than those with it. John considers the 5/- as one of the more interesting values, since the flaws are clearly visible; However, blocks and nice positional pieces are becoming difficult to find. In contrast, for example, studying the 2/6d value is guaranteed to give one severe eyestrain.

Tony Howgrave-Graham concluded the displays with fine showings of the 6d, 2/6d and 10/- values, with his customary offering of fine large blocks. Notable items were the 6d issue 2 with the V2 "Ladder" flaw in a positional block of six; this variety is scarce in a pair, but positional blocks are something special. The 10/- included a fine range of shades and a large block with V1, the projection on the foot of the "1" in 10/- in the right hand value tablet. Then he filled in a couple of gaps in John's 5/- display including a bottom right corner block of six with inverted watermark and showing V5 "broken jukskei", V6 "dot left of yoke pin", V7 "green spot below Posseel" and V8 "green blob above posseel" - a truly wonderful item.

Again, this was yet another most enjoyable meeting.

Articles Needed

Your Editor is in dire need of articles short and long. The in basket is now completely empty. If you feel inspired to do something but do not know how to go about it, please let me know and I can try and help.

I prefer articles in digital format (sent via e-mail, on a cd or you can call me and I will send you a memory stick to save it on. I can accept MS Word or Publisher files. The home pc versions of MS Worx are also ok as I can convert these.

If you do not have pc facilities, do not despair as I will take typed manuscripts or hand written articles. These just take a bit of time to type up but I am prepared to do this if it gets an article into print!

Eddie Bridges

Article on The Union of South Africa in Stamp Magazine

Tony Howgrave-Graham wrote a nice article to promote Union philately which appeared in the July issue of Stamp Magazine. If you do not have a copy, try and get one. Well worth keeping for the future. Scan of the front page herewith.

THE WORLD'S BEST PHILATELIC MAGAZINE JULY 2010

STAMP

MAGAZINE



Classic beauty of Hong Kong's first issue



Dethroned kings reborn on stamps!
WIN the new set



Union of South Africa

Quirks, varieties and errors that make the 1910-61 era fascinating



London 2010
Our verdict on the British philatelic event of the decade



Stamps of the 1897 Brussels Expo

Labradors
Saluting the world's best-loved dog



Recall date 08/07/10

£3.55

9 770307 667220

www.stampmagazine.co.uk

Leamington Spa Weekend Conference

Dates as per the Events for your diary at the beginning of this journal.

If you need a hotel room, please advise Simon Peetoom of your requirements. His tel. number and e-mail address as follows:

Tel. no. 01619 268422
E-mail: info@AfricaStamps.co.uk

A good weekend not to be missed!

Leamington Conference Auction

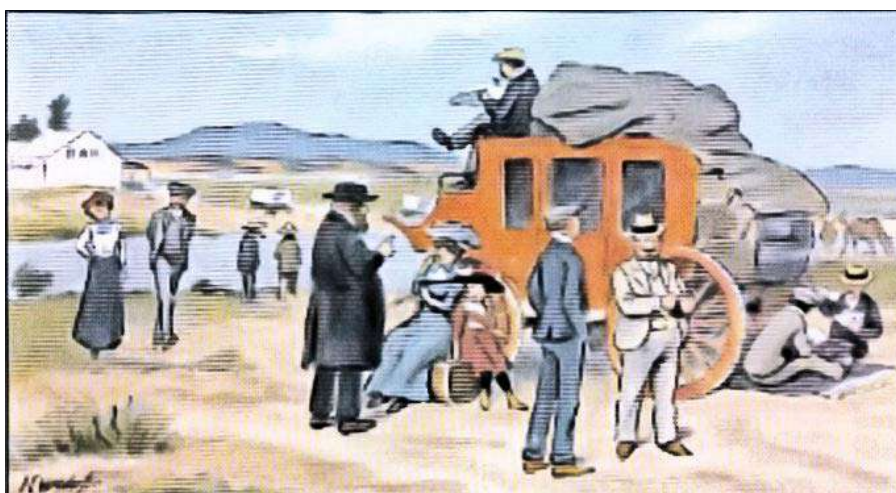
Tony Howgrave-Graham is still looking for material to auction. If you have any better spare or duplicate material you would like to convert into cash to invest in other material, please let Tony know soon.

His contact details are as follows:

Tel. no. 01725 510067
E-mail: ajbmhg@btinternet.com

SPOT A WINNING DEALER! ...IN JUST TWO QUICK STEPS

1. Identify PAUL VAN ZEYL t/a RAND STAMP AUCTIONS in this picture



2. Contact him to discuss how we can help each other, to get a “win-win” (auction or direct sale) result at:
e-mail: paulvz@mweb.co.za; Tel +27 (0)12 329 2464; Fax +27 (0)12 329 3157

The Bantam War Issues 1942-1945

By Eddie Bridges

Synopsis

This article aims to try and simplify the identification of the various issues. This has been comprehensively covered in the 1979 Handbook as well as the Definitive Handbook by Jack Hagger in 1986. These two handbooks need to be read together to get a full picture. I have tried to bring the information together here in one article.

Reasons for the Bantam Issues

At intervals from August 1942 onwards, all values of the War Effort stamps from ½d to 1/- were brought out in a much smaller format to save paper. The designs were copied, with the modifications and adaptations which this reduced design required from the corresponding values of the large War issues, issued from 1941 to 1943. All these modifications were done by J. Prentice from the Government Printing Works.

The Designs

The ½d design was based on a drawing of marching infantry, provided by an unknown artist.

The 1d design was based on a nurse (Barbara Palmer) drawn by the War artist Neville Lewis, while the frame was drawn by Corp. Wagner of the Defence Force Printing Unit.

The 1½d featured a portrait of Bob Kershaw also drawn by Neville Lewis with the frame by Wagner.

The seaman featured on the 2d was Clive Peter based on a drawing by Neville Lewis with the frame again drawn by Wagner.

The photograph of Elizabeth Liebenberg of the Woman's Auxiliary Corps was featured on the 3d and the photo was provided by the Postmaster General. The frame was again drawn by Wagner.

The drawing of the defence installation on the 4d was done by Wagner in its entirety.

Wagner was also responsible for the 6d design depicting a welder.

The design for the 1/- tanks and the 1/3 signaller were designed by unknown artists.

(see article in Vol.57 Iss. 4)

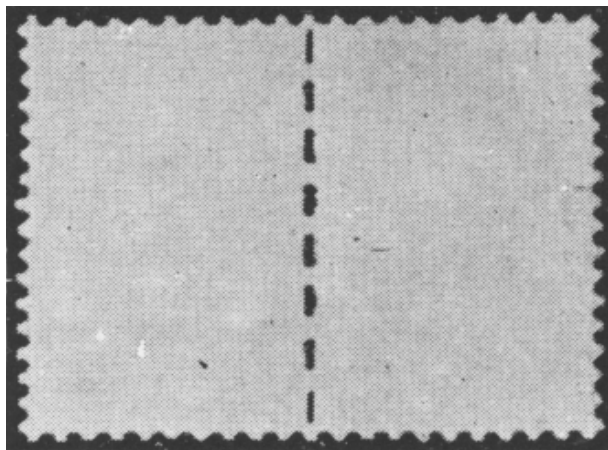
The Issued Stamps



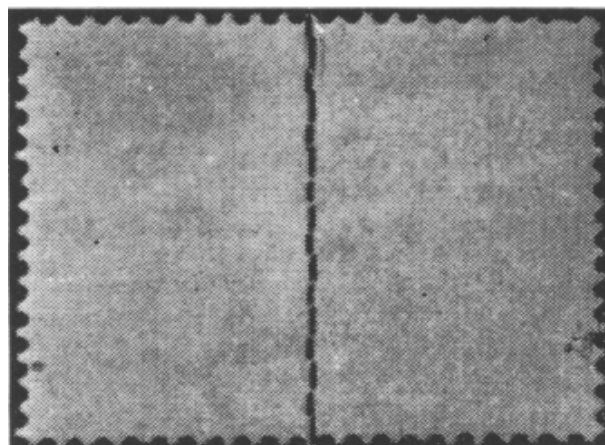
The Printing Format

All the stamps were in a single colour and printed in pairs or triplets to suit the size of the standard size stamps normally printed as the eleven row perforating combs could not be altered, thus the stamps were perforated around their perimeter of either the pairs or triplets and the remaining separation being carried out by rouletting.

On the earlier printings of the 1½d, the first denomination to be printed, the rouletting was by means of a double disc, each disc cutting slits of 1.25mm long to a gauge of 6½. When the two discs were properly synchronised, as the generally were, the cuts are in a continuous line and gauge 13. When this did not happen, the cuts are in parallel or staggered lines and in some cases one of the discs did not cut at all. This early experimental separation is known as "double" rouletting. All subsequent rouletting was done by a single disc, cutting slits of 1.75mm in length to a gauge of 6½.



Single Rouletting



Double Rouletting

A further innovation was the use of all the sheet margins to print slogans advocating the purchase of Union Loan Certificates. In the earlier issues these consisted of stamp size slogans on two of the margins and text Buy Union Loan Certificates and the Afrikaans equivalent on the other two margins.

These were normally on the side margins.

From 1945 onwards the slogans in the side margins were replaced by double parallel lines intersected by the figures 240 or 360 indicating the number of stamps per sheet.

To begin with the slogans were in the same colours of the accompanying stamps, but later, sheets of the ½d, 1d, 4d and 6d values had the slogans printed in violet.

In all there were nine different slogan or combined figure and slogan cylinders, and with the aid of small differences between them, the various cylinder and colour combinations, which are easiest to detect on the corners of the sheets, can be distinguished. It is this feature that makes the collecting of these stamps so fascinating and challenging!

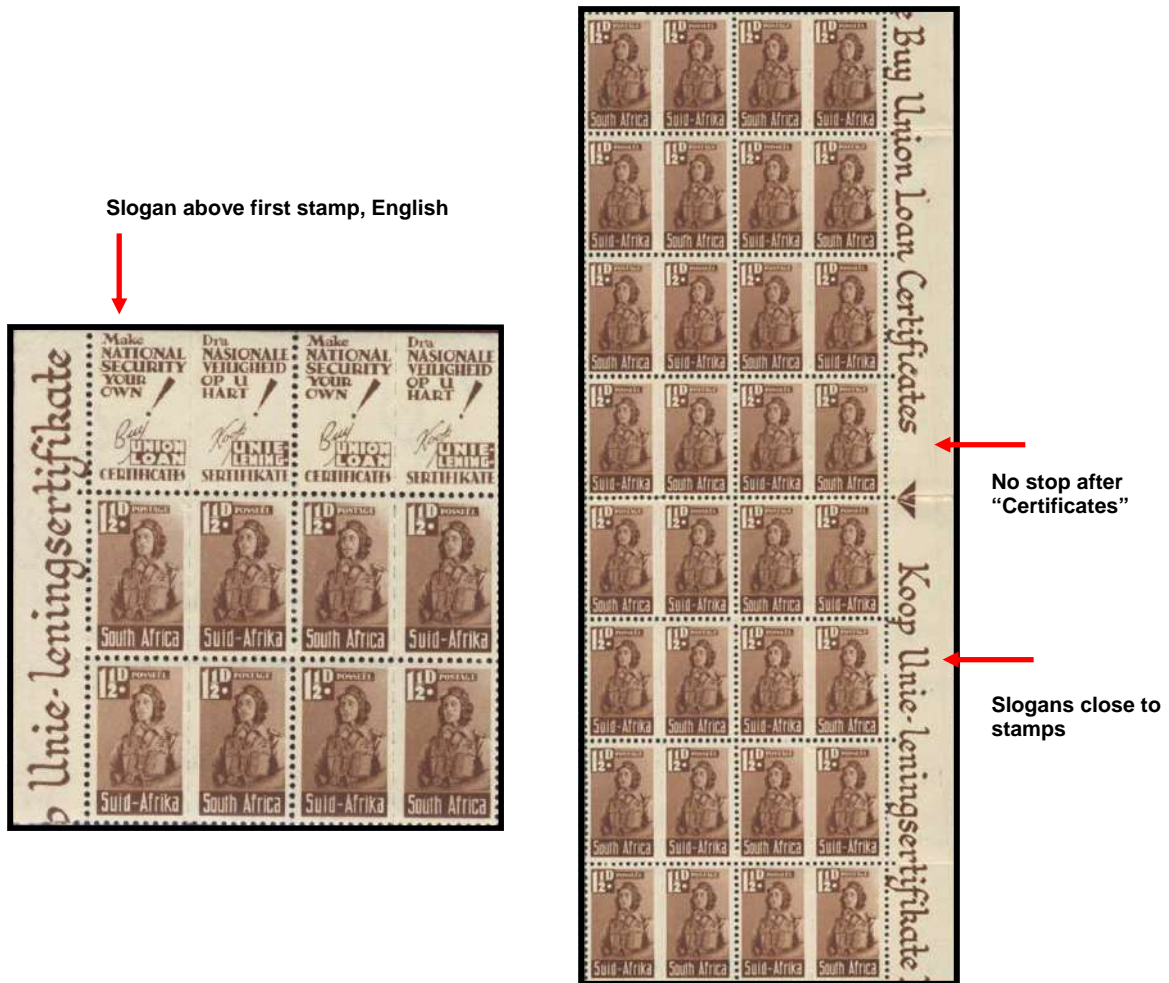
These corner pieces and in some cases any stamp with the margin attached, which distinguishes the issue, are listed as controls. The arrow pieces have only been listed under controls when they have a definite value for identification purposes.

Cylinder numbers

The stamp cylinder numbers used are listed at the beginning of each stamp value. The slogan/figure cylinder s differed according to whether they were paired with 240 or 360 stamp cylinders. The actual number of these cylinders has not been notified, so each has been allocated a number for reference purposes and their features are described and compared in the following tables:

**Marginal cylinder for the 240 Stamp Sheets—1½d, 2d, 6d and 1/-
(20 rows x 12 stamps)**

Type	No.	Distinguishing Features
Slogan	1	The side margin slogans are close to the stamps with slogans on the top and bottom margins the same size as the stamps. The slogan above the first stamp on the sheet is in English . There are no stops after the words "Certificates" at the side arrow positions.

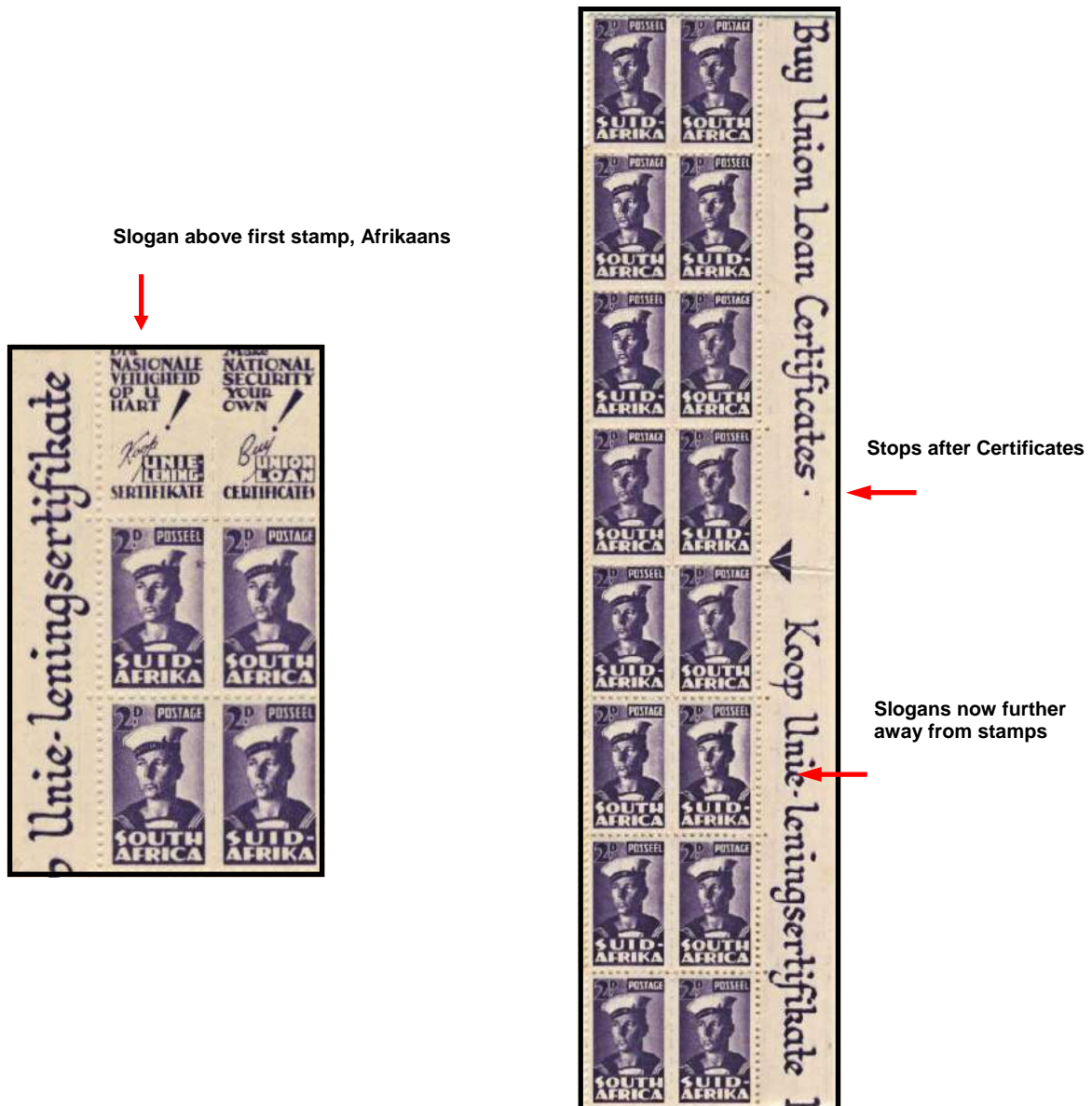


The issues that used this marginal cylinder:

Value	Issue	Colour
1½d	1 & 2	brown
2d	1	violet
6d	1	orange
1/-	1	brown

**Marginal cylinder for the 240 Stamp Sheets—1½d, 2d, 6d and 1/-
(20 rows x 12 stamps)**

Type	No.	Distinguishing Features
Slogan	2	Slogans on the side margins are further away from the stamps and the slogans in the top and bottom margins the same size as the stamps. The slogan above the first stamp in the sheet is now Afrikaans . There are now also stops after the words “Certificates” at the side arrow positions

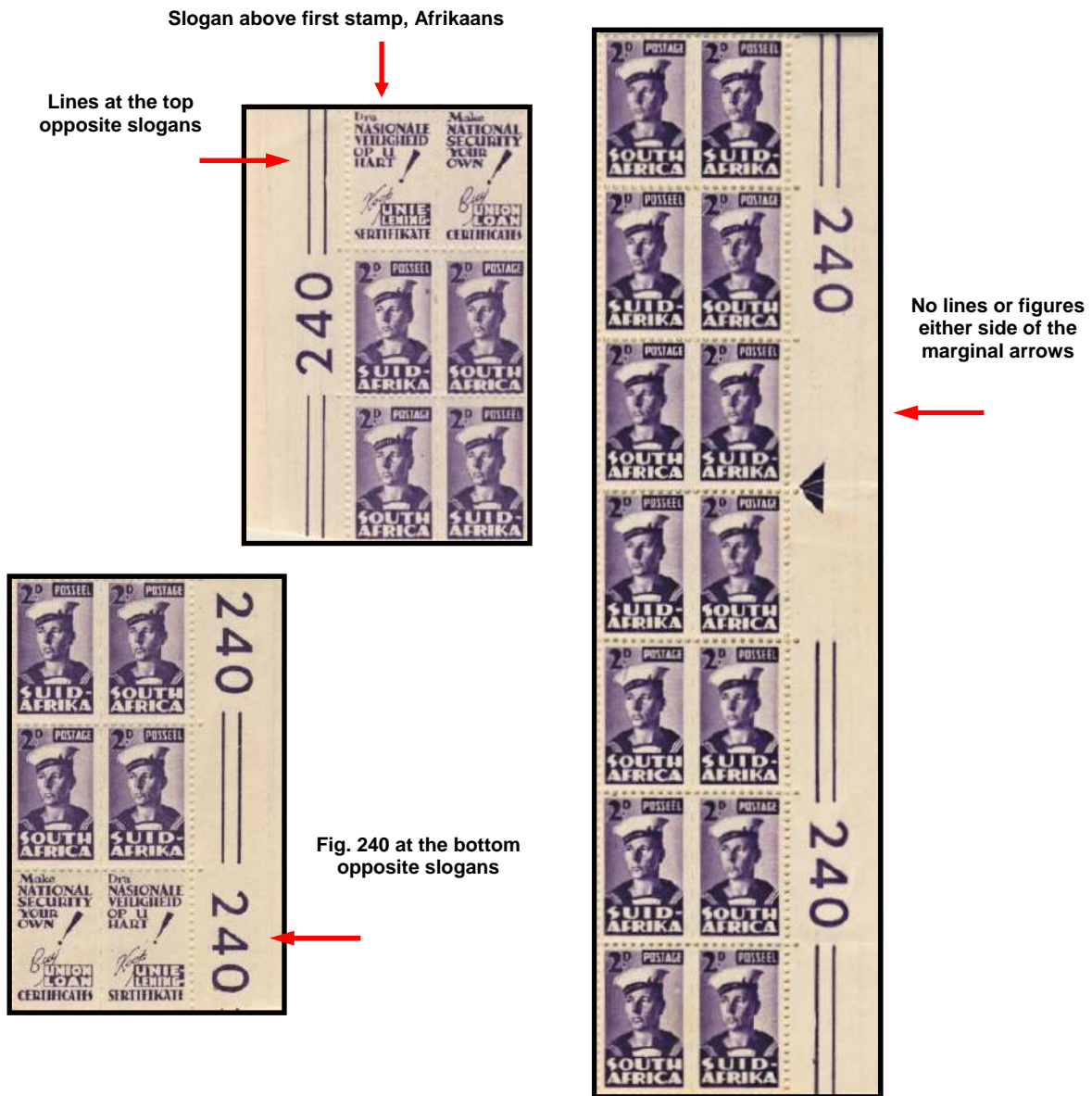


The issues that used this marginal cylinder:

Value	Issue	Colour
2d	2&3	violet
6d	2	orange
1/-	2	brown

**Marginal cylinder for the 240 Stamp Sheets—1½d, 2d, 6d and 1/-
(20 rows x 12 stamps)**

Type	No.	Distinguishing Features
Figure	3	Slogans in the top and bottom margins are the same as in Slogan cylinder 2. (<i>Afrikaans</i> above the first stamp on the sheet) The side margins are now filled with a pattern formed of two parallel lines, followed by the figures "240" except at the end of the 10th and 11th rows. (either side of the marginal arrow)

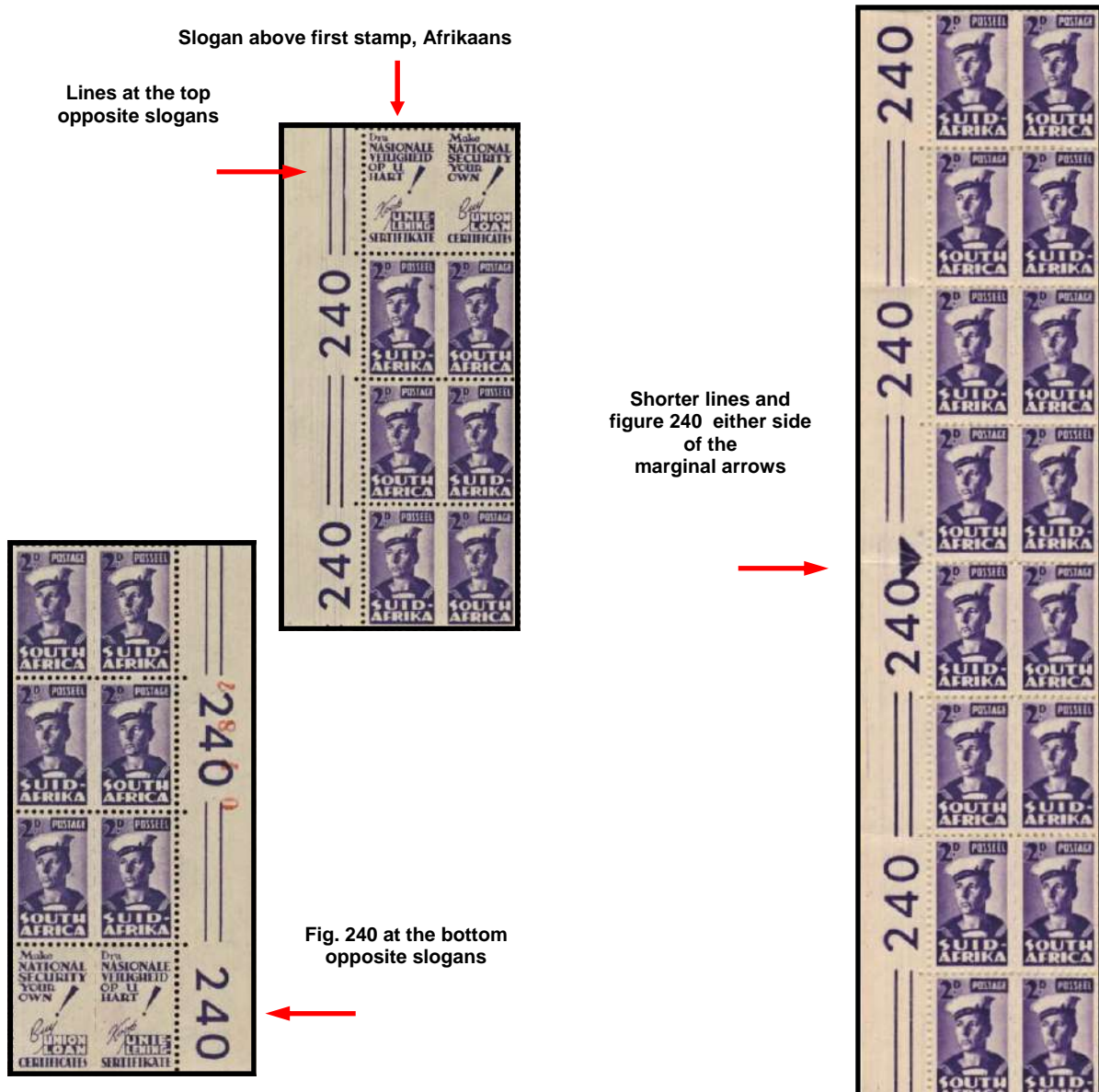


The issues that used this marginal cylinder:

Value	Issue	Colour
2d	4	violet
6d	3	violet

**Marginal cylinder for the 240 Stamp Sheets—1½d, 2d, 6d and 1/-
(20 rows x 12 stamps)**

Type	No.	Distinguishing Features
Figure	4	Slogans in the top and bottom margins are the same as in Slogan cylinder 2. (Afrikaans above the first stamp on the sheet) The side margins are now filled with a pattern formed of two parallel lines, followed by the figures "240". The spaces at the end of the 10th and 11th rows, (either side of the marginal arrow) are now filled in with "240" and two shorter lines



The issues that used this marginal cylinder:

Value	Issue	Colour
2d	5	violet

**Marginal cylinder for the 360 Stamp Sheets—½d, 1d, 3d and 4d
(20 rows x 18 stamps)**

Type	No.	Distinguishing Features
Slogan	5	There are no dots around "B" of Buy in the top right corner and there is a large blob in the bottom of the slogan tab above the 16th stamp of the top row. It is almost certainly because of this defect that this slogan cylinder No. 5 was only used for the first issue of the ½d value. Slogan above first stamp is English . No stop after "Certificates" in the side margin opposite row 10 above the marginal arrow.

Slogan above first stamp, English



No dots around "B" in the upper right corner.



Blob above stamp 16 in the top row.

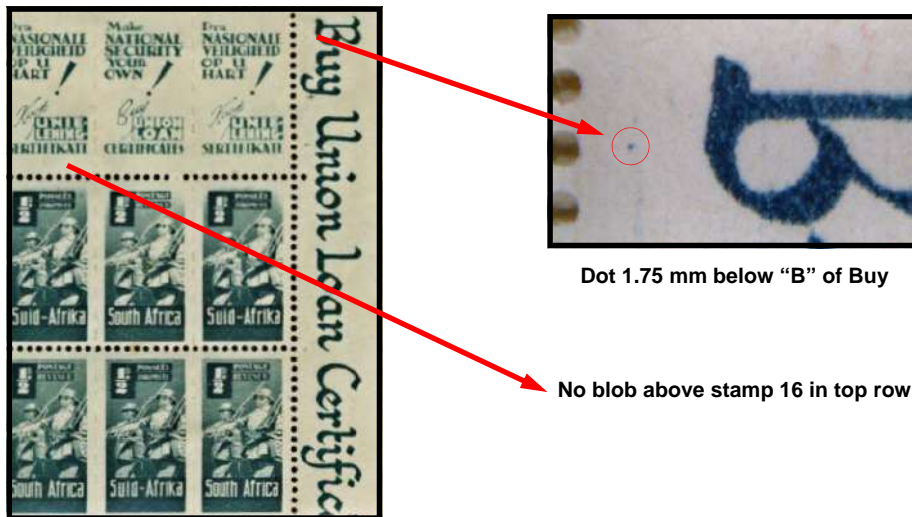
The issues that used this marginal cylinder:

Value	Issue	Colour
½d	1	green

**Marginal cylinder for the 360 Stamp Sheets—½d, 1d, 3d and 4d
(20 rows x 18 stamps)**

Type	No.	Distinguishing Features
Slogan	6	There is a dot 1.75mm below the “B” of Buy at the top right corner and the blob above stamp 16 is no longer present. Essentially very similar to Slogan 5. First slogan above stamp 1 is English . No stop after “Certificates in the side margin opposite row 10 above the marginal arrow.

Slogan above first stamp, English

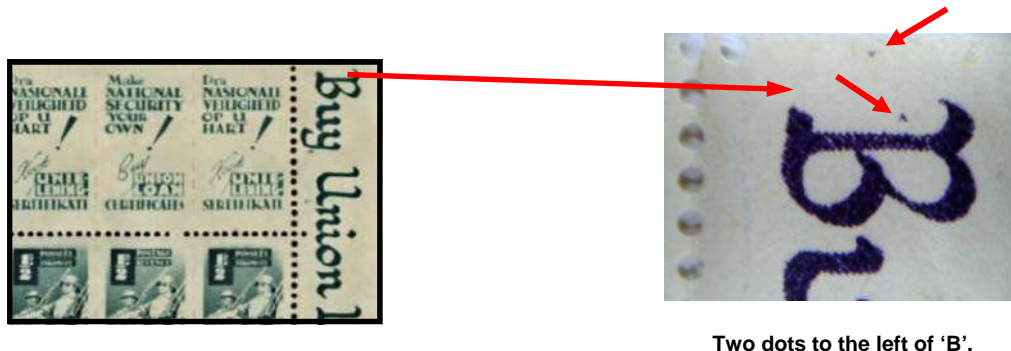


The issues that used this marginal cylinder:

Value	Issue	Colour
½d	2	green
1d	1	red
3d	1	blue
4d	1	green

**Marginal cylinder for the 360 Stamp Sheets— $\frac{1}{2}$ d, 1d, 3d and 4d
(20 rows x 18 stamps)**

Type	No.	Distinguishing Features
Slogan	7	There are now two dots to the left of "B" of Buy in the top right corner. One dot close and the other 2.75 mm away. The dot below the "B" is no longer present. Slogan above stamp 1 is <i>English</i> . There is no stop after 'Certificates' in the side margin opposite row 10 above the marginal arrow.



The issues that used this marginal cylinder:

Value	Issue	Colour
$\frac{1}{2}$ d	3	violet
$\frac{1}{2}$ d	3a	violet
1d	2	violet
3d	2	blue
4d	2	violet

**Marginal cylinder for the 360 Stamp Sheets— $\frac{1}{2}$ d, 1d, 3d and 4d
(20 rows x 18 stamps)**

Type	No.	Distinguishing Features
Figure	8	Slogans in the top and bottom margins same as those of slogan cylinders 5, 6 and 7 (first slogan above stamp 1 in English), but with a pattern formed by the figure "360" and two parallel lines filling the whole length of the side margins apart from the portions opposite rows 10 and 11. (blank either side of the marginal arrow) The top corners start with the parallel lines and the bottom corners have the figure "360".

Slogan above first stamp, English



Position either side of the marginal arrow is blank



Top corners start with parallel lines and bottom corners end with the figures 360

The issues that used this marginal cylinder:

Value	Issue	Colour
1d	3	violet

**Marginal cylinder for the 360 Stamp Sheets—½d, 1d, 3d and 4d
(20 rows x 18 stamps)**

Type	No.	Distinguishing Features
Figure	9	Similar to Figure cylinder 8, but with the side margins completely filled and having the figure “360” and lines in reverse order. Thus there are now figures instead of lines in the top corners and lines instead of figures in the bottom corners.



The figure '360' and lines are now in reverse order. Thus there are figures instead of lines in the top corners and lines instead of figures in the bottom corners.



Side margins completely filled

The issues that used this marginal cylinder:

Value	Issue	Colour
½d	4	green
1d	4	red
3d	3	blue

The Bantam issues can provide many hours of fun and can be quite challenging to collect all the issues. Generally the control pieces can still be picked up relatively cheaply with the exception of a few key blocks which are scarce. However to have examples of all issues the investment soon adds up!

I have for many years had a keen interest in both the full size War issues as well as the Bantam issues. During my time off in recent times, I relooked at these issues and decided to document these in a small handbook which is still an ongoing project. (one of many!)

Any additions or corrections, please advise your editor!

Society Visit by our Hon. Secretary, Chris Oliver and his wife

The following report was sent in by member, John MacLennan on the visit to The Ferndown & West Moors Philatelic Society

MOBILE POST OFFICES OF SOUTH AFRICA AND SPITSBERGEN MR. AND MRS. CHRIS OLIVER.

This evening members enjoyed a double bill with two excellent speakers with diverse displays. First up was Susan Oliver with a display of Spitsbergen which she described as informal and a personal collection which initially was not intended for competition or display and started out after her visit to this region. Owned by Norway this arctic territory was always a tourist spot and the only inhabitants were employees of weather or radio stations.

On display were various covers and postcards the latter portraying the spectacular scenery or the ships that visited the region. Many of the local communities as well as the shipping companies produced their own stamps which had to be supplemented by Norwegian issues to allow postage. An interesting item was a wrapper used for the Spitsbergen Gazette, a journal for the mining community. Various covers illustrated the local hand stamps which were often kept on board the ships.

Susan interspersed her talk with anecdotes one of which concerned the time when she helped the local postmaster frank the mail before returning it to the ship. A postcard produced by a German tourist leader who ran his own company and issued his own stamps was on display. One of the rarer items was a postcard from Bear Island. The last frame dealt with the various expeditions that produced their own large cachets.

Chris Oliver filled the second half of the evening with a display of the mobile post offices of South Africa. These were introduced in 1937 as the townships expanded rapidly with the first one established in Johannesburg; each of the vans had an itinerary stopping for 20 minutes at each destination. Postmarks were bilingual at first but later had their own separate cancellations. These cancellations varied from double rings to special boxed cancels and many examples were used to illustrate this. Photos of the buses and also the interior of the post offices were shown.

In all 25 of these mobile routes were used in all the major towns of South Africa but they were gradually withdrawn during the 1980's. Examples of nearly all of these routes were in evidence accompanied with the itinerary and proved an interesting display for members many of whom were unaware of this aspect of postal history.



If any of our members are visiting a society to do a display and talk, please let the editor know so we can publicise the event.

Nick Arrow has advised that he will be doing a display at the Bristol Woodbury PS - it will now be on the 22nd November, 2010. If any of our members wish to attend, please contact the Society secretary at Bristol Woodbury or Nick Arrow.

Wanted

I am looking for Positional pieces on the Large war issues. If you have any duplicates spare, please let your Editor know with asking price. Part sheets also acceptable.

Eddie Bridges

Members may submit wants (lists or specific items) for publication in *The Springbok*. ***This is a free service!***

Dealers

If you are a dealer and would like to place an advert, please contact the Editor for rates.

Argyll Etkin Limited

For

FINE STAMPS AND POSTAL HISTORY OF THE WORLD

Specialised material from most Countries - Artists' drawings, Essays,
Proofs, Specimens, Postal Stationery, Stamp Boxes.

Items of Historical Interest
including
Royalty - both British and Foreign

* * * * *

We have always had a particular interest in Southern African territories,
and can usually offer an interesting range of material from those areas.

* * * * *

We also undertake valuations of Philatelic & Historical material for all purposes,
including insurance & probate.

* * * * *

AUCTIONS

We hold at least two major auctions per year, offering substantial collections and material
which is relatively new to the market.

We welcome visitors Mondays to Fridays 9 - 5

**17 Waterloo Place
(Cnr. Pall Mall)
London SW1Y 4AR**

Tel: +44 (0)20 7930 6100

Fax: +44(0)20 7930 6109

E-mail: philatelists@argyll-etkin.com

Website: www.argyll-etkin.com



Stephan Welz & Co.

IN ASSOCIATION WITH

Sotheby's

EST. 1744



Postage Stamp and Postal History sales



SG 206a



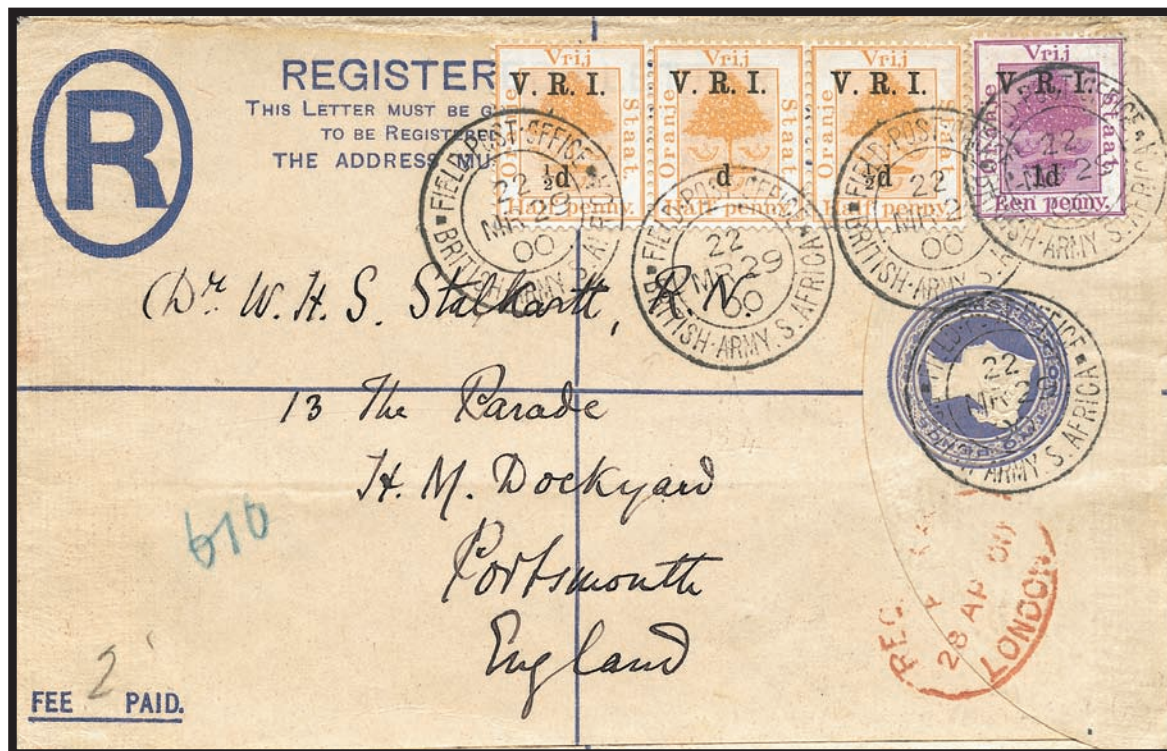
£1 Perf 15



5/- used in S.W.A.



Shifted overprint



Missing '1/2' in strip of three

ENQUIRIES: HOWARD GREEN, DANNY SWART OR MORNÈ DE LA GUERRE

Tel: (011) 880-3125/9 Fax: (011) 880-2656

E-Mail: jhb@sothebys.co.za
Stephan Welz & Co. (Pty) Ltd.
(Reg. No. 68/14585/07)

13 Biermann Avenue, off Oxford Road, Rosebank, 2196
P.O Box 52431, Saxonwold 2132, South Africa.