

THE SPRINGBOK

SOUTH AFRICAN COLLECTORS'
SOCIETY QUARTERLY

www.southafricacollectors.com



Volume 65 No. 2

Action No. 45 - Will be held at our Annual Society Meeting 27/28th May 2017
Not to be missed as it includes the Graham Chard Collection



This Wrapper may contain only Newspapers or such documents as are allowed to be sent at the printed papers rate of postage. If this rule be infringed, the packet will be surcharged as a letter.

Hierdie omslag mag slegs gebruik word vir koerante of vir sodanige dokumente wat teen die posgeld van toepassing op drukwerk verstuur mag word. Indien hierdie reël oortree word, word die pakkie as 'n brief beboet.



The Springbok was awarded a large Vermeil medal at the Spring Stampex 2017

Contents	Page	Contents	Page
Society News:		Articles:	
AGM Notification	41	Value versus Rarity	Mike Tonking 48
Auctioneer's Report Nick Arrow	42	Postal Stationery Wrappers	Dr. J Curtis FRPSL 48 - 54
Letchworth meeting Report February 2017	43	2nd RSA Definitives Part 2	Roy Ross 56 - 64
London Meeting Report March 2017	44	Union Roll Stamps	Mike Tonking 65 - 67
SACS Summer Meeting Announcement 2017	44	The Bible Stamp	Roy Ross 71
SACS Accounts	45	60 Years of SA Flight	Roy Ross 72 - 73
Carlisle Meeting Report March 2017	45	1910 Union Stamp	L & R Lester 74
Features:		From The Editor's Desk:	42
SA Post Office Award	55	SACS Study Collection Booklets:	40 - 41
Auction Report 2017 Tony Howgrave-Graham	68 - 71		

The Springbok is published quarterly for the benefit of Members of the South African Collectors, Society. It is not available to non-members. Contributions in the form of letters, notes, reports of SA related activities, articles, etc., are always welcome and should be sent to the Hon. Editor. All correspondence including a SAE will be acknowledged.

Editor

R W Ross

Editorial Panel

T. Howgrave-Graham

C. Oliver

J.L. Shaw

© **South African
Collectors' Society,
2017**

**Vol. 65 Iss. 2 Whole No. 338
Founded 1947**

Editorial.

I am pleased to announce that the Springbok was awarded a large vermeil medal at the recent Spring Stampex and would like to thank all contributors for making this possible. All last years issues were entered in the Literature class.

On page 75 there is some extracts from the ABPS news. Copy and paste the link for the Illegal stamps, it is an eye opener into what people will do to make money.

Attached with this issue there is a Wicks medal voting form for the best article in the Springbok during 2016. Please take the time to fill in your vote and return it to our secretary Chris Oliver.

Also attached is the Auction list for Auction 45, the Graham Chard collection. The auction will be held at Annual meeting, weekend 27/28th May. If you have not been to one before, why not come along and enjoy a super weekend. Full details can be found on page 44.

The third issue of the Springbok will be going to the printers at the end of August. The deadline for inclusion is the end of second week of August. May I remind everyone that the Editor accepts any form of article and questions and that we do have a number of distinguished philatelists willing to help members within the society

Membership News

Welcome to new members: Hugh Amoore RDPSA 1201 from South Africa
Anthony L. Griffon 1202 from Florida USA

And the return of Ian Frith from Cheshire

Awards

At Spring Stampex The Springbok magazine was entered in the literature class and was awarded a Large Vermeil medal

Our website has been updated and the new RSA Commemorates 2011 - 2016 added

[RSA Commemorative Stamp Issues 2011 to date](#)

www.southafricacollectors.com

SOUTH AFRICAN COLLECTORS' SOCIETY

THE WICKS AWARD MEMBERS' VOTE

FOR THE BEST ARTICLE DURING 2016 IN THE SPRINGBOK, VOLUME 64

To be presented at our annual meeting at the end of May

Voting form attached with this issue

FEPA Exhibitions Calendar

All forthcoming exhibitions are listed at <http://fepanews.com/International%20Exhibitions>

Annual Society Meeting Saturday/Sunday 27/28th May

The Strawberry Bank Hotel in Meriden Coventry CV7 7NF

Contact our Events Organiser Simon Peetoom Tel: 0795 157 1962 simon@africastamps.co.uk

SACS Study Collection Booklets by Lyn & Rob Lester



It is with much pleasure that the Society are again able to offer for sale, to all our members, copies of the past Study Collection Booklets along with a number of new booklets that have recently been compiled.

For full details of each of the study collections, along with their price, please refer to the website as any updates will be listed here in the first instance. Information about new booklets will also be included in the Springbok. The A4 booklets are double sided colour copied (except for one which is black and white) and neatly bound providing an attractive reference document on a number of topics. The Library also holds a copy of each booklet for reference.

One of the purposes of these booklets is to provide a record of a specific study or specialism in South African and South West African philately. The booklets are invaluable to anyone wishing to branch out into a new

collecting field and provide information on varieties, faults and personal analysis undertaken by the authors. Much of the information is far more detailed than that contained in the handbooks and catalogues.

Some of the booklets are based on the displays given at the Southern African Societies Annual Conferences over the past years, as well as National displays in London and South Africa. These cover a wide range of philatelic topics. Anyone who might have a collection, or specialism, that they consider may provide appropriate information for the compilation of future booklets please contact [Lyn & Rob Lester \(Lyn28lester@hotmail.co.uk\)](mailto:Lyn28lester@hotmail.co.uk) or contact the website.

Listed below is a synopsis of the booklets currently available along with their price. Prices do not include postage:

- Booklet 1 Bantam War Issue; £12.00
- Booklet 2 Pictorial Booklets of the Union; £15.00
- Booklet 3 1926 to 1936 Officials; £15.00
- Booklet 4 1937 to 1950 Officials; £15.00
- Booklet 5 Kings Head Collection (black & white copy only); £12.00
- Booklet 6 2d London Pictorial; £15.00
- Booklet 7 2d Rotogravure issues 1931 – 1952; £15.00
- Booklet 8 Union Roll Stamps; £18.00
- Booklet 9 Kings Head with SWA overprint; £15.00
- Booklet 10 Republican Roll Stamps; £15.00
- Booklet 11 1911 to 1940 Airmails; £40.00
- Booklet 12 1914 Rebellion; £10.00
- Booklet 13 South Africa's Homelands; £12.00
- Booklet 14 ½d – 2d Animal Definitive Series; £15.00
- Booklet 15 Barry Smith's Airmails 1911-1974; £15.00
- Booklet 16 History of Transvaal; £15.00
- Booklet 17 Bradbury Wilkinson Recess Pictorials; £15.00
- Booklet 18 First stamp of the Union SG1; £20.00
- Booklet 19 SWA Postage Dues; £10.00
- Booklet 20 Postage Dues 1961 to 1972; £10.00
- Booklet 21 ½ d & 1d Unhyphenated Rotogravure Pictorials; £18.00
- Booklet 22 4th Definitive Building Series; £10.00
- Booklet 23 1d Hyphenated Rotogravure Ship stamp; £12.00
- Booklet 24 ½d Hyphenated Rotogravure Springbok stamp; £12.00
- Booklet 25 Union 3d Groote Schuur stamp 1927 to 1954; £12.00
- Booklet 26 Official overprints with stereo process 1950 to 1954; £12.00
- Booklet 27 3rd Definitive Protea series 1c to 4c; £15.00
- Booklet 28 1941 War Train; £10.00
- Booklet 29 SWA Officials 1927 to 1952; £10.00
- Booklet 30 Postal Markings of the Cape of Good Hope; £18.00

Purchases can be made on an individual or bulk basis. For any enquires please contact Lyn & Rob Lester, (Lyn28lester@hotmail.co.uk)

NOTIFICATION

and

Agenda of the A.G.M. of the South African Collectors' Society to be held at Strawberry Bank, Meriden CV7 7NF at 17.00hrs on Saturday, 27th May 2016.

1. Apologies.

Record of previous A.G.M. [see Springbok 64/3 80/81]

3. Matters arising if not included elsewhere in the agenda.

4. The Hon. Chairman's written report.

5. The Hon. Secretary's written report.

The Hon. Treasurer's report & statement on proposed subscriptions for 2018.

Reports from other officers of the Society, if any.

Election of Officers and committee.

Conferment of Hon. Membership.

Ratification of Library Fund.

At present we allocate £200 per annum to enable the Hon. Librarian to purchase new books for the Library.

Society meetings and events :

A brief report on those held. [if not already recorded in The Springbok.]

S.A.C.S. meetings in Carlisle and London proposed for 2018.

Other meetings for S.A.C.S. in 2018.

British Philatelic Congress at Cardiff.

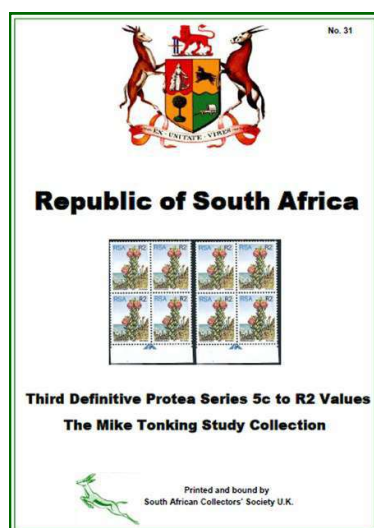
Any others:

S.A.C.S. support for Youth Philately.

In previous years we have made a donation to support this. Do we wish to continue so to do?

12. S.A.C.S. occasional monographs & their printing.

A.O.B. – if notified to the Hon. Secretary prior to the meeting.



New Study Booklet

SACS Study Collection No 31

Based on an exhibit this comprehensive study describes the third Definitive Protea series values from 5c to R2. It compliments Study Collection No 27 with detailed varieties and flaws for the high value stamps in the series.

PRICE £15.00

For orders please contact Lyn & Rob Lester @
Lyn281lester@hotmail.co.uk

From The Editors Desk

A Request from Brian Fountain

Following the recent editorial inviting members to submit queries regarding their stamps, perhaps some members could help me with the following:

In my Union collection I have a mint 1938 pair of the 2d unhyphenated blue and violet stamp overprinted 'Official' with 'airship' flaw. Until recently the main catalogues have not listed flaws on the 'Official' overprints on Geo.6 issues. However in the 20th. edition of the Commonwealth Catalogue I note that the 6d 'Official' ladder and molehill varieties fetch a considerable premium (Cat.011aa and ab), although the 2nd 'airship' variety (Cat 09) is not listed. At last Gibbons have caught up and in the 2016 catalogue this stamp (SG015a) is listed but not priced. With reference to my Union Handbooks: 1952, 1960 and 1986 this stamp (SHB072, 38A) Issue 3(070) has always been valued at a low price but the overprinted variety must have had a very limited run. Does anyone know how many sheets of this issue were printed and how scarce this particular flaw might be. Deverell and Macgregor have recently offered a used block of 2 pairs including this flaw which they annotate as 'remarkable'.

A Request from Tony Howgrave-Graham

Does anyone have any information on the 1st RSA R1 definitive (Cyls 1/12/117). I obtained a large lot of used on both papers and quite fancy trying to reconstruct a sheet (as near as I can) with each watermark. The info in the handbook is too thin to manage without more large blocks than I have. If anyone has any plating information or large blocks, mint or used, that may help me, I would like to hear from them.

A Comment from Mike Tonking

I was interested to see Otto Peetoom's note on the 2d. SG 021 used on cover. *The Springbok, Jan 2017 page 7*. This is the first one seen up to 1974 used on Official mail. I am not sure that it is correct to assume that the 1d. SG 019 was not available on 19 11 47. There could be a whole number of reasons why the 1d. SG 014 was used rather than SG 019. For example it may not have been in the departments stock at that time.

Auctioneer's report - April 2017

By Nick Arrow

As you will see from the Auction list, the Auction for June should both interest and challenge all members. One of the objectives of the Society is "to promote philately of all periods of the area now geographically represented by the Republic of South Africa and Namibia and to provide facilities for the exchange of information and material relevant to such study", and it is my strong conviction that this auction presents members with a chance really to specialise their material - there is scarcely a single lot which will fail to promote those interests!

However, the material that I have for the next auction is currently looking rather thin, and without wishing to sound like a scratched record, I must appeal to the members to let me have their unwanted material for sale.

I have received a hint that I might have the collection of another late member for sale, but this is still very much up in the air, and, even if it does materialise, I will not have too much time to prepare it, or parts of it, for sale in November.

So, my message for this issue of the Springbok is -

- 1 - look at the current auction list (as I am sure that there is not a single member who will be unable to find a lot to extend his own collection)
- 2 - get your bids in early and -
- 3 - look out your own surplus material and send it in as soon as possible so that it can be in the November sale.

I look forward to seeing as many of you as possible over the weekend of the 27/28 May, complete with your cheque books to buy as much from the auction as you can manage!

**South African Collectors' Society meeting at Letchworth Garden City at 14.00hrs.
on 18th February 2017
By Chris Oliver**

Bob Hill had organised and chaired this meeting which took place in the Mrs. Howard Memorial Hall. This was about 300 meters further from the station than our previous venue.



Nine members and one honoured guest were present. David Northover is the Secretary of the Letchworth branch of the North Hertfordshire Philatelic Society and allowed us to use the display frames of that branch.

Chris Oliver produced postal stationery cards from 1996. Most were extremely boring but, those present, found the Cape Town Ladies and Chinese Workers sets of interest. Both of these sets were reprinted from period postcards issued early in 20th C.

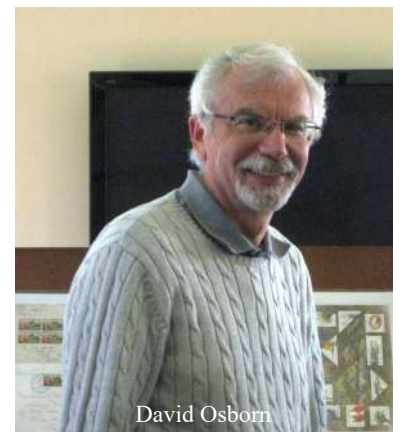
Steve Hannath's display posed the question "What is a classic stamp". No definite answer was received although several cogent responses were forthcoming. The display continued with items which Steve enjoyed collecting. All agreed that this was the only way to collect. We saw that, initially, the Cape Town post office was of a rural nature. Also, a McClear letter to the Royal South African Observatory and various cancellations of interest.

David Page displayed the sterling Animals definitive penny value including coils. He was particularly interested in the development of the "Drakensberg" flaw but included doctor blade flaws. David finished with a frame of Durban 1928 Exhibition labels.

A display of various cancellations and cachets was one of Bob Hill's contribution to the afternoon. The most impressive items were a share certificate issued by BICT; An Alfred Dock 1909 cachet (unrecorded); An unusual single ring cancellation of the Union Buildings, Pretoria; a Government Gazette 1d and telegraph forms with cancellations.

Bob's next contribution was some sandwiches and other welcome refreshments for us all, for which he was thanked.

David Osborn displayed a 1913 Kirstenbosch Garden precursor, postmarks & stamps and printing varieties of the 1971 show and commemorative envelopes of 60th



and 100th anniversaries of the founding of the Gardens.

Rob and Lyn Lester showed labels of the Johannesburg gala season, 1925 National Industrial Exposition and National Veld Trust of 1946, 1947 and 1948 with different shades on similar designs on differing years and some advertising covers.

All thanked Bob for organising the show and David Northover for providing the frames. It was hoped that one or two more members could be encouraged to attend in the future to enable the Letchworth meetings to continue. We will certainly have another meeting here in 2018.

**Auction No. 45 - Will be held at our Annual Society Meeting
Saturday/Sunday 27/28th May**

The Strawberry Bank Hotel in Meriden Coventry CV7 7NF

This Auction is not to be missed as it includes the Graham Chard Collection

Report on London Meeting held on 18th March 2017 at the Calthorpe Arms

By Chris Oliver

The topic for the afternoon was "Postage Dues". In attendance were Tony Howgrave-Graham, Rob Lester, Tony Johnson, Tim Harrison, Joe Daniels, John Shaw and Chris Oliver. Apologies had been received from David Page, John Archer, Len Roux and David Osborn.



We discussed a few things pertinent to the Society before the philatelic meeting took place. Tony H-G and John had brought along some very interesting and somewhat scarce Group 1 and Group 2 Union items including specimens and many varieties, both general and rare. We then saw Group 3 and Group 4 Postage Due varieties of note from Tony, John and Rob before proceeding, after a refreshment break, to the bantam issue and then to the decimal and Republican Issues, of which Chris displayed a few. Also displayed were a number of covers with Postage due Tax strikes and occasional explanatory notes affixed. The last display was presented by Tim, who showed early Union postage due stamps overprinted for use in South West Africa. This expanded the numbers of varieties and flaws available to view and discuss. Sandwiches

were, again, provided by John Shaw who was thanked for this. It was an enjoyable afternoon which finished at 5pm. At our next London meeting, on 23rd September, the theme is to be "Cinderella's".

O

S.A.C.S. Summer Meeting – 27th/28th May 2017

This year we are meeting on Saturday and Sunday May 27th/28th at The Strawberry Bank in Meriden, which is a village, roughly half way between Birmingham and Coventry, just off the A45. The hotel address is Main Rd, Meriden, CV7 7NF. The closest train station is Hampton in Arden, the closest main line station is Birmingham International. If you are going to come along from further afield, we are very close to Birmingham Airport.

I wish to welcome as many members as possible, to what has proved a very popular meeting, that incorporates the Abell Trophy, One Frame Competition, our Annual General Meeting and the auction of the Graham Chard Collection on Sunday. We start at 11am on Saturday with an open programme of displays and a "Bring and Show" format on the Sunday. It is an informal meeting and we have a lot of fun, through philately and catching up with friends. If you have not been before, why not come along? You don't need to stay over, just come for either of the days and you will be given a warm welcome.

The bed & breakfast rate is £60 per person, £70 for a double, with dinner £20 per head in the restaurant. I still have several rooms on hold for anyone wishing to stay.

For more details please call or email Simon Peetoom.

Tel: 07951571962

Email: Simon@africastamps.co.uk

South African Collector's Society Accounts

To be Audited

Restating of Income & Expenditure to 31st December 2015

Excess Income over Expenditure	1,412.31
Auction re Leamington	- 700.50
	<u>711.81</u>

Income and Expenditure to 31 December 2016

Income		Expenditure	
Subscriptions collected	1,782.57	Purchase SA mag	278.93
Subscriptions S A Mag	278.93	Springbok 4 magazines	1,622.83
Auction Income NA	408.65	Rent London	35.00
Photocopy sales	147.57	Rent Carlisle	100.00
Package Circuit Surplus	51.39	Books Library	117.00
Donation	15.63	Stamp Insurance	128.45
Advertising Magazine	90.00	Abps and handbook	170.75
		Website	275.00
		Trophies	61.55
Interest	25.16	Sundry	195.00
		June conference	165.95
		Postage	21.66
	<u>2,799.90</u>		<u>3,172.12</u>
Loss for year	- 372.22		

Balance Sheet as at 31st December 2016

Bank Current	8,269.67	Subs 2017	1,593.07
Cash	103.75	Owed to D Haig	100.00
S.A. Rands 5612 @18	311.78	Owed to Packet Sellers	234.73
Deposit Account	3,112.30		
Packet Fund Account	<u>206.39</u>		
	12,003.89		
Copier	1.00	Brought Forward	11,307.51
Trophies	858.20	Loss for year	- 372.22
			<u>12,863.09</u>
Totals	<u>12,863.09</u>		

Treasurers Report to 31st December 2016

I have shown above a restated position as at 31st December 2015 because I mistaking banked the auction profit from Leamington Spa Auction into the wrong account. Therefore Auction income was overstated in the 2015 accounts. My apologies for supplying misleading accounts last year.

This year there is an overspend by £372.22 which is due to a donation and June conference however the society has got a strong bank account so this is an acceptable position especially with the booklets produced by Lyn & Rob which is bringing life to the society .

Report on the 50th Carlisle Meeting - March 2017

By Malcolm Ridsdale

Meeting held at the County Hotel, Carlisle on Saturday 18th March 2017

Attendees – David Haig, Roy Ross, Colin Moore, Eric Hammond and Malcolm Ridsdale with apologies from Peter Dix.

David Haig welcomed everybody to the 50th meeting.

Items through the Chair

The next meeting will be held on the 16th September 2017 at the County Hotel, Carlisle. The topic of the next meeting would be “open house” which was continuing to be a varied and entertaining choice.

Around the Table

Before the displays were set up for the following session the attendees spent time discussing a range of SA philatelic topics. Whilst the meeting had fewer than usual attendees a lively debate took place across a spectrum of Union and Republic areas.

Displays

Roy Ross

RR initially displayed a range of aircraft commemorative covers charting the first 60 years of SAA flights. His second display included a range of mint RSA commemoratives from the period 1984 to 1988, some control blocks from this period, miniature sheets and FDC's.

Eric Hammond

EH's initial display included a range of Official Union used overprints, used stamps from the inter-provincial period, RSA postage dues including mint blocks of 100 of the 1c and 2c and mint stamps of the New Republic covering values from 1d to 2/6.

His second display include a wide range of mint SWA overprinted Union stamps including air mails and the war issues including some of the more common varieties. He also included mint pairs of the 1931 SWA definitives.



Eric Hammond

Malcolm Ridsdale

MR displayed some Blue Train items including the FDC and ephemera from 1972 when the new train was introduced and a range of mint blocks, FDC's and booklets from 1997/8 celebrating 25 years of the “new” train.



Malcolm Ridsdale

David Haig

DH's initial display included some early Ermelo postcards that he had recently acquired, some European post cards covering the Boer War and the Herero War. His second display was of RSA mint Protea cylinder blocks of various denominations.

Colin Moore

CM initially displayed a selection of the RSA Buildings R2 mint blocks of four. His second display showed off a range of the RSA Succulents definitives with most values being represented in mint control blocks.

The meeting closed at approximately 2.30pm.

Some Observations on Value Versus Rarity

By Mike Tonking

Interesting comparisons can be made of the relative catalogue values, rarity and auction realisations of four typical examples of missing colours on Union and Republic commemorative stamps, A conversion exchange rate of £1 = R16 has been used with values as per the 2016 catalogues. The first observation is that the South African Colour catalogue (SACC) values are up to three times those of the Stanley Gibbons catalogue whose values are more in line with recent auction realisations. It is difficult to justify the SACC values based on recent actual international auction realisation.

Four typical examples of missing colours have been selected for comparison.

3d. Academy of Science 15.5.59 - SG163a - SACC 168a - Fig. 1.

Dark blue omitted. Only six recorded from the top row of a single sheet.

12½ c. Centenary of Red Cross 30.8.63 - SG 226a - SACC 225a - Fig. 2

About 40 are recorded with the red cross missing and 20 with it half missing.

2½ c. Transkei Legislative Assembly 11.12.63 - SG 237a - SACC 244a - Fig. 3

Green background missing from 22 stamps on row 5 - 9

12½ c. 50th Anniversary of SA Nursing 12.10.64 - SG 257a - SACC 249a - Fig. 4

Gold colour missing on 25 stamps rows 2 - 6 pane A.

Stamp	Numbers recorded	Rarity	Catalogue Value		Auction Bid
			SG	SACC	
Academy of Science	6	1	£5500	£12500	£2400
Transkei Legislative	22	2	£3250	£11250	£2000
50th Nursing Anniversary	25	3	£3500	£8125	£3500
Centenary Red Cross	+/- 40	4	£4250	£11250	£5800

From the above it can be seen that the Academy of Science is about three times rarer than the Transkei Legislative Assembly, 4 times the 50th Anniversary and no less than seven times the missing Red Cross.

For collectors of missing colours due to interrupted printing the apparent lack of interest in the Academy of Science, the rarest of these examples, is hard to explain. The most recent auction bid was only 56% of the SG catalogue value.

At the end of the day the true value of any stamp is what someone is prepared to pay at which auction which must reflect its true value.

References:

The stamps of the Union of South Africa 1910 - 1961 page 196 - S.J. Hagger 1986

South African Philatelist - August 1965. April 1974.

South African Collectors' newsletter April 1965.

Fig. 1
Academy of Science



Fig. 2
Centenary of Red Cross



Fig. 3
Transkei Legislative Assembly



Fig. 4
50th Nursing Anniversary



Unfortunately the images have not reproduced very well as they are photo copies. Ed.

South Africa Post Office Postal Stationery Wrappers: Analysis of Supply and Demand

Dr John K. Courtis FRPSL

Post Office Issues

The Union of South Africa heralded in the first post office postal stationery wrappers in 1913. Prior to the formation of the Union, the former separate British colonies of Cape of Good Hope, Natal, Transvaal and the Orange Free State issued their own wrappers. The first pair of wrappers of South Africa comprised a ½d green (E1 using the Higgins & Gage “E” catalogue numbers) and a 1d red (E2) head of King George V facing left. The text message was of four lines of English and in a separate paragraph four lines of Afrikaans. A total of 2,520,000 were printed of E1 and 270,000 of E2. Normally, the lower denomination was issued for use within South Africa while the 1d red was intended for non-South African destinations, the ratio between the two quantities being about 10:1. The indicia are shown below copied from the forthcoming Kosniowski catalogue of Wrappers of the Whole World with his kind permission.



On 10 February 1914, the 1d red was reissued but with a new text reduced to three lines of English and three lines of Afrikaans (E3). The new wording was more concise removing the words “...and must not enclose any letter or communication of the nature of a letter (whether separate or otherwise)” and replacing them with “...printed papers rate of postage”. The several text messages are shown in Illustration 1.

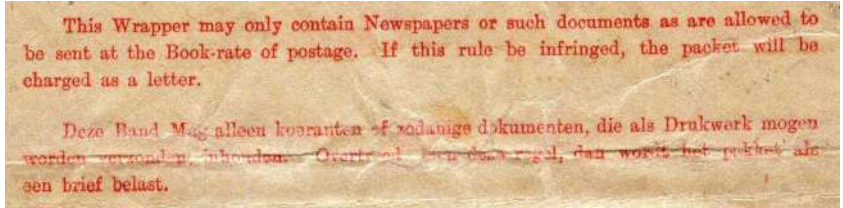
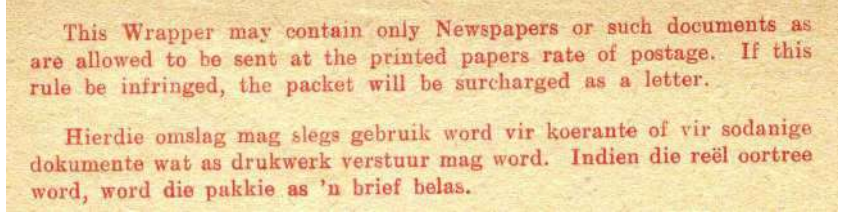
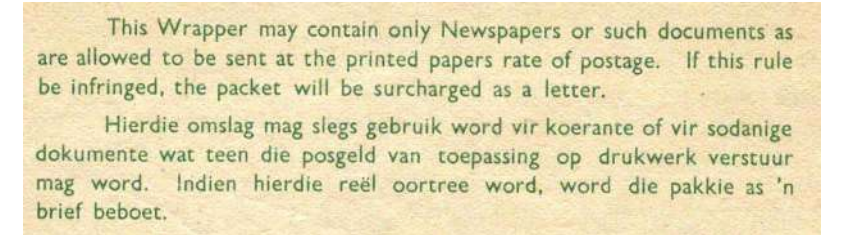
The indicium of the monarch of Great Britain was replaced with what might be considered to be a local icon, namely, the image of Jan van Riebeeck’s ship “Drommedaris”. This new indicium appeared on 15 November 1927 on a 1d red and black (E4), with SUIDAFRIKA without hyphen below the vignette. The layout of the second and third lines of text in both English and Afrikaans differed from the 1914 issue – most easily distinguished by “the packet” and “die pakkie” at the end of line two. Kosniowski has noted the existence of a variety with the missing black vignette. However, the existence of genuine varieties has been questioned in a recent article; this missing vignette variety might be no more than printer’s waste (Frescura 2016).

On 18 August 1928, the ½d green KGV was replaced with the image of a Springbok (another national icon), ½d green and black (E5) with SUIDAFRIKA without hyphen. The text wording is the same as for E4. This is an elusive wrapper because the issue was short-lived being replaced in 1929 with a new format of the text in all three lines of both the English and Afrikaans versions. The width of the texts is the same at 104mm, but the typesetting of the words is more spread out and replaces the word count of 13//11//6 with 10//14//11 for the English version and 12//14//4 with 11//11//8 for the Afrikaans version, with the second line ending “oortree”. The ½d green and black (E6) and the 1d red and black (E7) also show SUIDAFRIKA without hyphen. Kosniowski notes that a plate variety of E6 is extant with a broken H of the first word of Afrikaans Hierdie. Further text layout changes occurred in 1931 with wording changes to lines three and (now) four of the Afrikaans version for both the ½d green and black (E8) and 1d red (E9). Yet another text change occurred in 1933 with the typestyle altered from serif to sans serif and SUID-AFRIKA now showing a hyphen for both the ½d green and black (E10) and 1d red (E11) with chamfered top corners. This 1933 issue was produced also unchamfered (E12, E13).



The six basic different text messages and formats are shown in Illustration 1.

Illustration 1: Various Types of Text messages on Wrappers of South Africa

 <p>This Wrapper may only be used for Newspapers or for such documents as are allowed to be sent at the Book-rate of postage, and must not enclose any letter or communication of the nature of a letter (whether separate or otherwise). If this rule be infringed; the packet will be charged as a letter.</p> <p>Deze Band mag slechts gebruikt worden voor Koeranten of voor zodanige dokumenten als als Drukwerk mogen worden verzonden. Brieven of mededeelingen van de aard van brieven (hetzij afzonderlijk of anderszins) mogen niet worden ingesloten. Indien deze regel wordt overtreden, wordt het pakket als een brief belast.</p> <p style="text-align: center;">Text A: E1 and E2</p>
 <p>This Wrapper may only contain Newspapers or such documents as are allowed to be sent at the Book-rate of postage. If this rule be infringed, the packet will be charged as a letter.</p> <p>Deze Band Mag alleen koeranten of zodanige dokumenten, die als Drukwerk mogen worden verzonden, inhouden. Overtreed een deze regel, dan wordt het pakket als een brief belast.</p> <p style="text-align: center;">Text B: E3</p>
 <p>This Wrapper may contain only Newspapers or such documents as are allowed to be sent at the printed papers rate of postage. If this rule be infringed, the packet will be surcharged as a letter.</p> <p>Hierdie omslag mag slegs gebruik word vir koerante of vir sodanige dokumente, wat as drukwerk verstuur mag word. Indien die reël oortree word, word die pakkie as 'n brief belas.</p> <p style="text-align: center;">Text C: E4 and E5 (pakkie)</p>
 <p>This Wrapper may contain only Newspapers or such documents as are allowed to be sent at the printed papers rate of postage. If this rule be infringed, the packet will be surcharged as a letter.</p> <p>Hierdie omslag mag slegs gebruik word vir koerante of vir sodanige dokumente wat as drukwerk verstuur mag word. Indien die reël oortree word, word die pakkie as 'n brief belas.</p> <p style="text-align: center;">Text D: E6 and E7 (oortree)</p>
 <p>This Wrapper may contain only Newspapers or such documents as are allowed to be sent at the printed papers rate of postage. If this rule be infringed, the packet will be surcharged as a letter.</p> <p>Hierdie omslag mag slegs gebruik word vir koerante of vir sodanige dokumente wat teen die posgeld van toepassing op drukwerk verstuur mag word. Indien hierdie reël oortree word, word die pakkie as 'n brief beboet.</p> <p style="text-align: center;">Text E: E8 and E9 (verstuur)</p>
 <p>This Wrapper may contain only Newspapers or such documents as are allowed to be sent at the printed papers rate of postage. If this rule be infringed, the packet will be surcharged as a letter.</p> <p>Hierdie omslag mag slegs gebruik word vir koerante of vir sodanige dokumente wat teen die posgeld van toepassing op drukwerk verstuur mag word. Indien hierdie reël oortree word, word die pakkie as 'n brief beboet.</p> <p style="text-align: center;">Text E: E10, E11 and E12, E13 (sans serif)</p>

Specimen wrappers of the sort printed by De la Rue in London do not exist for South Africa. James Bendon believes that SPECIMEN handstamps found on E1 and E2 and illustrated by Quik (2001) were applied in Bechuanaland to unmarked wrappers. These wrappers are said to have originated from the Bechuanaland archive.

Cont'

Supply on eBay

This is an eBay-based study. The data for analysis has been culled from a large database of images of world-wide used post office postal stationery wrappers hand-collected daily since September 2003 from the US Internet site eBay. To date this database is approximately 50,000 different images organized by country and Higgins & Gage catalogue number. There are 121 wrappers of South Africa and it is this sub-population that is analyzed. It is acknowledged that there are other sources of supply of South African wrappers such as dealer bourses and traditional philatelic auction houses as well as dealers selling directly to known customers. However, as the accumulated data has been collected over a lengthy continuous daily period covering 13+ years and as the size of the database is larger than the holdings of any individual or dealer it has credibility as a proxy of what has been available of the international market over this period of time.

Between 1913 and 1933 there were 13 issues of post office types including text box and chamfering differences although only six different indicia were used. The frequency of listing appearance on eBay is summarized for each post office type in Table 1. The dominant extant type is the first issue with about 60% of the total extant wrappers recorded. When the 1d red issued in 1913 is added the total of these two issues was 70% with 85 of the 121 wrappers. The remaining 36 wrappers are spread over seven other types. There are four types with no recorded incidence of listing: E5, E7, and the last issues E12 and E13 with square corners. It is normally not possible to observe the upper corners of wrappers listed because of the manner in which they are folded and scanned so inspection of the actual copies of E10 and E11 might reveal the absence of chamfering. Users' demand for this kind of postal stationery steadily declined by the end of the second decade of the 21st century so it is not surprising that the numbers of extant copies also declined. With perhaps the exception of E8 none of the issues from 1914 onward can be considered "common" with listings rates of about one every one or two years.

There were 19 uprated wrappers or 15.7% of the total covering seven types. Postal history collectors interested in wrappers addressed to destinations outside South Africa were better served with 15 countries mentioned. The dominant country was USA with 28 wrappers, followed by the UK and South West Africa (12 each), Holland (8), Germany (7), Switzerland (4), France (3), Canada, Finland, Southern Rhodesia and India (2 each) and Belgium, Portugal, Czechoslovakia and Chile (1 each).

Table 1: Listing Frequencies of South Africa PO Wrappers on eBay: 13+ years

H&G "E"	Post Office Issues	Total	Uprated	Within South Africa	Other Destinations
1	1913 KGV ½d green	71	10	20	51
2	1913 KGV 1d red	14	2	2	12
3	1914 KGV 1d red 3-lines English text	5	0	2	3
4	1927 ship 1d red & black	4	2	2	2
5	1928 Springbok ½d green & black	0	0	0	0
6	1929 Springbok ½d green, "oortree"	4	0	2	2
7	1929 Springbok 1d red, "oortree"	0	0	0	0
8	1931 Springbok ½d green, "verstuur"	15	1	5	10
9	1931 Ship 1d red & black, "verstuur"	1	1	0	1
10	1933 Springbok ½d green, sans-serif	5	1	1	4
11	1933 Ship 1d red sans-serif type text	2	2	1	1
12	1933 Springbok ½d sans-serif sq cnrs	0	0	0	0
13	1933 Ship 1d sans-serif square corners	0	0	0	0
	Total	121	19	35	86

Unlike a number of other countries there is only one recorded user of wrappers that applied private printing, namely, *The S. A. Ambassador*. The illustration in Kosniowski's forthcoming catalogue is cancelled with a double-ring WELLINGTON SOUTH 22 JUL A16 AFRICA, with the return address "If not delivered, please return to OLIVE WARNER, Wellington". A Google search of Olive Warner indicates she lived in Wellington and was a writer with several publications to her credit. She may have been the editor of *The S.A. Ambassador*.

Postal History Interest

Four wrappers have been selected for discussion for their postal history interest. The wrapper shown as Illustration 2-1 is a copy of E1 uprated with a 1913 ½d green King George V (Sc2) with circular date stamp JOHANNESBURG 15 MAR 13 S. AFRICA. There is a boxed merchant purple handstamp with name and address. The wrapper is addressed to Milwaukee, Illinois, USA and has a red circular censor mark PASSED BY CENSOR with unreadable censor number – applied upon entry to the USA. Although the wrapper is tatty in appearance it is the only example in the database with a censor marking.

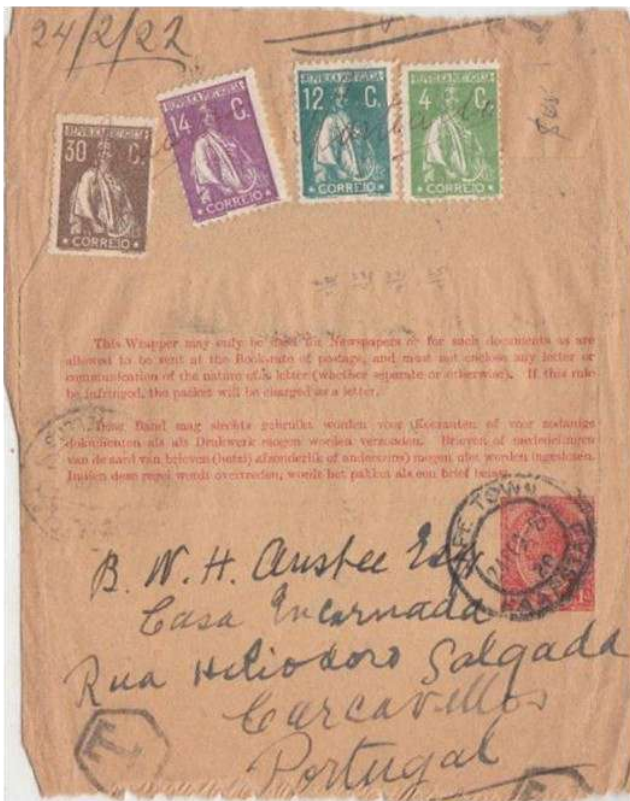


Uprated E1 with merchant and censor markings

Wrapper 2-2 has a seriffed T/51 within a circle tax black handstamp applied in South Africa. The numeral 51 is unexplained. This E1 wrapper was addressed to Sound Beach Connecticut, USA and was cancelled with a double ring POST OFFICE NEW BAGA ? 16 ? 15. There is no evidence that the postage due was or was not collected.



Postage Due auxiliary marking



Postage Due Hexagonal markings and paid with Portuguese stamps

The wrapper illustrated as 2-3 attracted the highest number of bidders for any one transaction and sold for the highest amount recorded in the database. This wrapper is addressed to Portugal and shows three strikes of a hexagonal postage due handstamp; one is located top right, the second lower left next to the address, and one below the address at right. The wrapper bears a pencil 24/2/22 which matches the date in the double-ring postmark CAPE TOWN 24 FEB 22 & identifier 20 KAAPSTAD. The postage due was paid in Portugal with four regular issue Ceres stamps: 1919 4c light green, 1921 12c deep green, 1921 14c bright violet and 30c grey brown (Sc221, 238, 241, 256). Written across these stamps is the Portuguese word *Cancelado* (Cancelled). The post mark at left of the text in Afrikaans needs inspection of the actual wrapper and may be a second strike of the Cape Town postmark.

The fourth wrapper is one of two recorded copies of a Registered wrapper; this one was sent from Pretoria to India with transit markings on the reverse. There is a boxed R handstamp with PRETORIA No. 126 (in manuscript) A. The underlined manuscript inscription Passports only identifies the contents and explains the reason for registration. A double-ring postmark cancels the indicium PRETORIA 13 OC 19. Part of the upper right of the wrapper has been torn away and this section was probably where the registration fee stamp was affixed as beneath the tear is the lower section of another double-ring postmark. The wrapper is addressed to Mr. Joshi with more detail than is usually found with directions at left and the addressee details at right. Near Bedi District Kathiawar via Bombay at left with Galé, P.O. Rajkot City (crossed out), India at right. Bedi is a port in the district of Kathiawar. Jetpur has been written in black beneath and in red above the indicium. Jetpur is a city in the Rajkot district of Gujarat. There are three handstamps on the reverse of the wrapper: departure double-ring PRETORIA 13 OC 19 INDO NATIVE OFFICE, transit double-ring RAJKOT 25 OC 19 and arrival circular date stamp JETPUR 26 OC 9 KATHIAWAR.



Registration Cachet for Passports sent to India

Demand on eBay

Another database developed by the author since March 2006 is the daily sales of worldwide used post office wrappers on eBay. The data collected comprises the identification of the wrapper, the sale price, the number of bidders and the seller identification and country location. This information has been hand-collected daily and there are approximately 19,500 observations of which only 40 are sales of South Africa wrappers. An immediate question is why only one-third of the wrappers listed were sold, especially if they are infrequently listed? There is no single explanation. Not all wrappers listed for sale sell. The size of the collector base may be small. The amount of interest at a particular moment is variable from zero to a sole recorded case of five bidders.

Details of the 40 sales distributed across the post office types are summarized in Table 2 organized by H&G catalogue number with actual sales per type recorded together with the number of different bidders involved in the transaction. These figures enable the computation of the average sale price per type as well as the average number of bidders involved per type. For example, the highest sale price recorded was USD87.00 for a copy of E2 with five bidders. Normally there is no matching by the author of the listed item and its eventual sale or otherwise but in this case an annotation of the sale noted that this wrapper showed auxiliary postage due markings. Any kind of auxiliary marking on a wrapper from South Africa is unusual and this wrapper thereby attracted five bidders.

The average realized sale per post office type is based on the sum of all sales for that type divided by the number of sales. Averages, however, can be distorted by extreme outcomes as is the case for E2 with the highest sales realization affecting the calculation of the mean. Moreover, average figures, while useful indicators of what has happened do not reveal the spread of past prices. An examination of the actual prices achieved from each transaction is arrayed from lowest to highest and enables a stronger interpretation of past price behaviour.

With the exception of the E2 wrapper which sold for \$87 there was no other high realization. Only three other wrapper sales were for sums above \$10. In other words, 36 of the 40 sales or 90% realized sums less than \$10. It would have been possible for a collector to obtain a copy of all listed types for less than \$50 and supplemented with mint wrappers for those not listed in used condition.

It goes without saying that the number of bids and the number of bidders are not one and the same thing. Two bidders can reach up to 20 or more bids during the listing period as they seesaw back and forth outbidding one another. The metric most useful in detecting the underlying strength of collector interest is the number of bidders involved in the transaction. By adding all bidders in the 40 sales an overall average number of bidders can be computed and for South Africa this is 1.85. This score is quite low and on this measure, ranks South Africa as 70th of 85 country-specific studies undertaken by the author. Not all bidders are postal stationery collectors for in addition postal history collectors interested in postmarks, destinations, auxiliary markings and upratings would be interested in acquiring this type of cover.

Average figures often do not explain the full behaviour of bidders and a profile of transactions and bidders might be more useful. There was one transaction with five bidders, two transactions with four bidders, six transactions with three, 12 with two bidders and 19 sole-bidder transactions.

Table 2: eBay Sales of Wrappers of South Africa: March 2006 – January 2017

H&G	Sales Details (Ranked Low to High in USD) & Number of Bidders per Sale	# of Sales	Mean Sale Price	Mean # of Bidders
1	0.99 (1), 0.99 (1), 0.99 (1), 1.30 (2), 1.44 (1), 1.47 (1), 1.53 (1), 2.21 (2), 2.99 (1), 3.51 (3), 4.20 (3), 5.00 (1), 6.39 (4), 7.16 (4), 8.50 (2), 9.00 (1), 9.75 (1), 9.99 (1), 9.99 (1)	19	4.60	1.68
2	0.90 (1), 1.35 (2), 1.36 (2), 2.99 (1), 4.25 (2), 6.39 (3), 10.16 (2), 87.00 (5)	8	14.30	2.25
3	5.24 (2), 9.50 (2)	2	7.37	2.00
4	5.50 (3), 5.99 (1), 7.89 (2), 11.53 (3)	4	7.73	2.25
5	No sales recorded	0		
6	2.99 (1)	1	2.99	1.00
7	No sales recorded	0		
8	3.00 (1), 4.24 (2), 6.15 (2)	3	4.46	1.67
9	5.00 (1)	1	5.00	1.00
10	11.59 (3)	1	11.59	3.00
11	1.58 (1)	1	1.58	1.00
	Total Sales of Post Office Issues	40	7.05	1.85

Conclusion

Prior to the Union of South Africa, former British colonies issued their own wrappers. Astonishingly the quantity extant of these four colonies is 14 times higher than the extant quantity of South Africa. The Cape of Good Hope has 940 examples in the database, Natal 493 examples, Transvaal 204, and Orange River Colony 50, an overall total of 1,687 dwarfing the 121 of South Africa. A likely explanation is that prior to the Union the role of newspapers and the spread of news locally and abroad was at its zenith during the 1890-1920 period. Against this background, apart from E1, the wrappers of South Africa are elusive with a listing appearance on the eBay market of one per year or two years or worse.

While only six indicia have been printed on the 13 wrapper types, there have been six different text wordings, layout and typeface. Mastering the different text boxes is challenging. There may be more text setting varieties.

The appearance of auxiliary markings on wrappers is scarce with two examples of postage due T handstamps, two examples of registered wrappers and a sprinkling of merchant marks. There are no named ships, no via directional markings, no airmail, no consular markings and no Cinderella's, in short little to excite the postal historian. On the other hand, there were 15 country destinations and for anyone so inclined, to obtain a copy of each of these destinations would have been a challenge.

Realized sales figures were less than \$10 for 90% of the sales transactions. Only four sales exceeded \$10 with one sale for \$87. Bidder interest is muted with an overall bidder score of 1.85 placing South Africa 70th in the rankings on this metric on 85 country-specific studies. Nevertheless, the analysis does reveal that E5 and E7 are very elusive wrappers not yet having been listed on eBay in used condition in 13+ years. While the latter issues are hard to find in used condition the last issue with square corners is especially a challenge.

References

- Frescura Franco (2016), Running a Philatelic Service: Some Personal Working Notes, 1994-1999, *Forerunners*, Vol. XXX, No. 1, whole No. 86, July-October, pp. 6-14.
- Higgins and Gage (1964), Priced Catalogue of Postal Stationery of the World, California.
- Kosniowski Jan (2017 forthcoming), Newspaper Wrappers: A Catalogue of Postal Stationery Newspaper Wrappers from the Whole World.
- Quik W. J. (2001), The Postal Stationery of South Africa, Part 2, South Afrika 1910-2000, Rotterdam, Nederland, pp. 292-297.

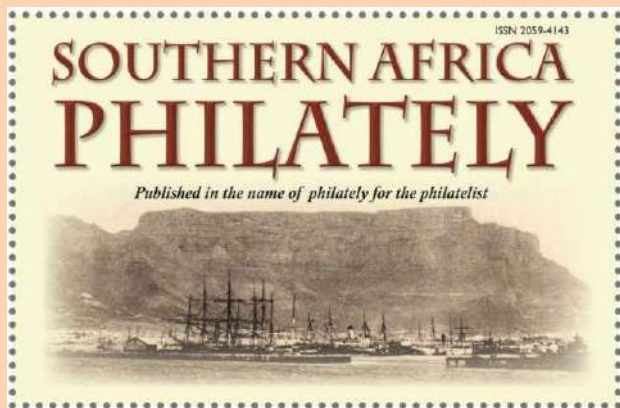
Acknowledgement

Allan Gory read and commented on an earlier draft and I thank him most sincerely for his input which has made the paper more robust.

_____ O _____

Website 2017 What's New
RSA Commemoratives another page added covering 2011 - 16
www.southafricacollector.com

Subscribe to



http://www.southafricanstamps.net/Southern_Africa_Philately.htm

Three Issues - Inland £10 - Overseas £16

OTTO PEETOOM (ORMSKIRK STAMPS)

Rectory Road, Roos,
East Yorkshire, HU12 0LD - UK

TEL: +44(0)1964 670239

Email: ottopeetoom@btinternet.com



We produce comprehensive lists for
The Rhodesias plus Nyasaland www.rhodesianstamps.net
Southern Africa www.southafricanstamps.net
GSWA - South West Africa www.swa-stamps.com
East Africa, KUT www.kut-stamps.com

The South African Post Office's Award Winning Stamps

The South African Post Office journal *SETEMPE* (January April 2015) - Volume 20 No 1 includes two news items.

Spain 2014

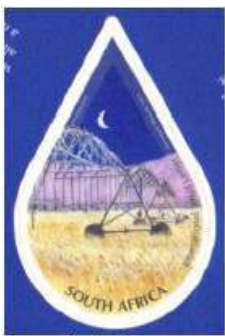


The SA Post Office took part for the first time in an International Competition in Spain during October 2014 and won a category for the *World's Most Original Stamp Format*. This competition was open for stamps issued during 2013. Other competing countries included Brazil, Canada, Finland, Italy, Russia, Sweden and the United Kingdom.

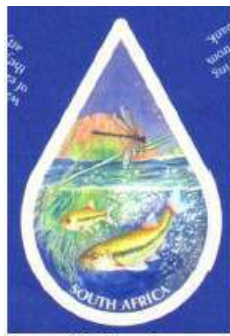
The Winning Entry

Issued on 20 March 2013, *International Year of Water Cooperation* and this issue consists of two circular discs, with the top disk die-cut with two apertures which can be rotated to show an individual stamp at the top end and the relevant information at the bottom.

Each self-adhesive stamp is in the shape of a water-droplet and the designs represent, 'Agriculture', 'Biodiversity', 'Human consumption', 'Working for Water Programme' and 'Industry'.



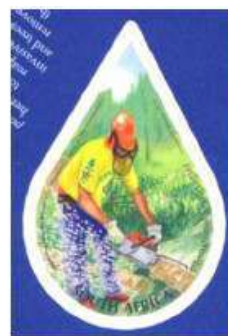
Agriculture



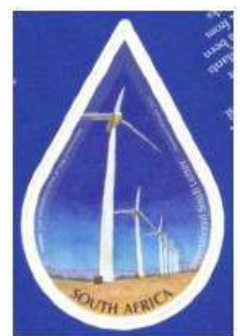
Biodiversity



Human consumption



Working for Water Programme



Industry

On 31 October an Award Certificate 'The Best Stamp of the World Award 2014' was presented to Mr Mzwanele Langa at the South African Embassy in Madrid who received it on behalf of the *South African Post Office*.

Malaysia 2014



On this occasion the South African Post Office participated in a UPU International competition for stamps issued during 2013.

The entries were exhibited and judged at the International Stamp Show held in Kuala Lumpur, Malaysia in December 2014.

The South African Post Office entry consisted of stamps mounted on thirty two A4 pages entitled *South Africa's Miniature Masterpieces of Art*.

Their entry was included in the category for countries that issue more than 70 stamps per year.

The Award Certificate is entitled: 'GOLD MEDAL DIPLOMA - GROUP C'

Illustrated at left, the title page of the SA Post Office entry



AfricaStamps.co.uk

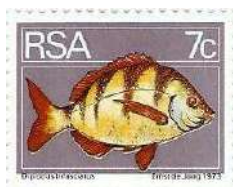
New website offering fine Southern Africa stamps and specialised items.



Email: info@AfricaStamps.co.uk

The Second RSA Definitive Series *Part 2*

By Roy Ross



7c ZEBRA

Cylinders 510. 509. 508. 507. A and B.

DESIGN: A single fish facing right in shades of orange and yellow on a dull mauve background. The inscriptions, in white, above, are “RSA” on the left and “7c” on the right. In the bottom gutter, in tiny mauve letters are “Diplodus trifasciatus” on the left and “Ernst de Jong 1973” on the right.

PAPER: Harrison, fluorescent, glossy. No watermark. PVA gum, from 340mm wide rolls.

SHEET FORMAT: Horizontal, measuring about 338 x 278mm. 100 stamps per sheet (10 rows x 10). A and B panes.

STAMP FORMAT: Horizontal measuring 30,2 x 23,9mm.

CYLINDERS: Four, cross lined screened. Numbers 510 dull mauve, 509 pale blue, 508 rosine and 507 yellow-orange. These coloured numbers, with the pane letter A or B in orange are shown on the bottom margin below stamps 9 and 10. Printed on the 841 machine.

SHEET NUMBERS: Are six figure black with an added 0, below stamps 7 and 8 of both panes. Those on the A pane are odd numbers and even numbers on the B pane.

ARROWS: Mauve, centrally placed on all four margins.

DATE OF PRINTING: Is in black figures 08.06.73 on the bottom margin below stamps 1 and 2.

COLOUR REGISTER: Consists of two concentric circles, divided by a cross, in colours superimposed; is on the right margin of pane B opposite rows 2 and 3.

STEP WEDGES: Are in graduations of colour, on pane A they are in rosine on the top margin above stamps 8, 9 and 10; 15 in number, numbered 2 to 16 from the left. On the B pane they are on the bottom margin (a) in blue, below stamps 1, 2 and 3; 15 in number, numbered from the right 2 to 16; (b) orange, below stamps 7, 8 and 9, 15 in number, numbered from the right 2 to 16.

DENSITOMETER COLOUR PATCHES: Are on the bottom margin of pane B and the top margin of pane A, below and above stamps 1, 2, 3 and 4 respectively. From the left they are in mauve, blue, rosine and orange. The panes A and B are bisected through them.

PERFORATIONS: By the Grover two row machine, gauge 12,5. The left and right margins are imperforate except for the single extra hole at each end of the horizontal rows of perforations. On the A pane the top and bottom margins are perforated through. The B pane has the top margin imperforate and the bottom perforated through.

REGISTER CONTROL MARKS: Consist of thick horizontal lines 10mm long and 20mm apart. Are on the right margins of : (a) Pane A, orange opposite row 11 and rosine in the right corner of the bottom margin, mauve opposite row 10. The line for the intaglio unit is opposite row 9 in deep purple with traces of tiny white holes.

STEEL PRINTING CYLINDER: Nil.

EDGE WEB CONTROL: Rosine, along the right margin of both panes.

VARIETIES

Row No. PANE A

- | | | |
|---|---|---|
| 1 | 1 | Tiny white hairline in bottom frame line at the left. |
| 3 | 1 | White dot above RS of RSA. |
| 9 | 5 | Large “cloud” at right foot of A of RSA. |

PANE B

- | | | |
|---|---|---|
| 1 | 1 | Faint white dot below mouth of fish. |
| 3 | 3 | Large faint white “cloud” in bottom right corner. |
| 4 | 9 | White dot at bottom fin’s right |
| 4 | 8 | White dot above “Jong”. |
| 5 | 5 | Large white dot above tail of fish. |
| 6 | 6 | White dot at centre of top frame line. |



9c ANGEL FISH

Cylinders 637, 638, 639 640. A and B.

DESIGN: A single fish, facing left. Colours mainly in shades of brown with two broad transverse bands in white across the body; and on a stone background. The inscriptions above are rather indistinct, in white, are "RSA" on the left and "9c" on the right. In the bottom gutter, in tiny black letters, are "Platax pinnatus" on the left and "Ernst de Jong 1973"

on the right.

PAPER: Harrison, phosphorescent. No watermark, matt. PVA gum from 340mm wide rolls.

SHEET FORMAT: Horizontal, measuring about 338 x 287mm. 100 stamps per sheet (10 rows x 10). Two panes A and B.

STAMP FORMAT: Horizontal, measuring 30,2 x 23,9mm.

CYLINDERS: Four, cross lined screened, numbers 637 lemon, 638 rosine, 639 pale blue and 640 stone. These coloured numbers, with the pane letter A or B in stone, are shown on the bottom margin below stamps 9 and 10. Printed on the 841 machine.

SHEET NUMBERS: Six figure black, with an added 0, are on the bottom margin of both panes below stamp No. 10; the added 0 is on the right margin. A panes have odd numbers. B panes have even numbers.

ARROWS: Stone, centrally placed on all four margins.

DATE OF PRINTING: In black figures 12.09.74, is on the bottom margin of both panes below stamp No. 8.

COLOUR REGISTER: Consists of two concentric circles divided by a cross, in the colours superimposed; is on the right margin of pane A opposite row 9. The left lower arcs are in green.

PERFORATIONS: Internally, gauge 12,5. The left and right margins are imperforate except for a single extra hole at each end of the horizontal rows of perforations. The top and bottom margins of both panes are perforated through.

REGISTER CONTROL MARKS: On pane A it is in lemon, 112mm long, along the top margin, from the left margin to stamp No. 4. On pane B they are left, rosine, blue and stone. Every second sheet of this pane has tiny white holes and is from the intaglio unit.

STEEL PRINTING CYLINDER: Numbered S9 in stone, is on the right margin of both panes opposite row 10.

EDGE WEB CONTROL: Nil.

VARIETIES.

There are no varieties worthy of record on all panes, but there is an interesting constant variety on all the B panes which have the black control mark of the intaglio unit, that is, every second pane. It is short black stroke in the top right corner of stamp 6 row 10, and is prominent. This is the most distinctive constant variety from the intaglio unit in all the denominations.



10c Moorish IDOL

Cylinders 633. 634. 635. 636 A and B

DESIGN: Shows a single fish, the Moorish Idol, facing left in shades of deep blue with two transverse bands of yellow across the body, and on a pale blue background. The inscriptions in white, above, are "RSA" on the left and "10c" on the right. In the bottom gutter, in tiny deep blue letters are "Zanclus cornutus" on the left and "Ernest de Jong 1973" on the right.

PAPER: Harrison, phosphorescent, matt. No watermark. PVA gum. From 340mm wide rolls.

SHEET FORMAT: Horizontal measuring 340 x 286mm. Two panes, A and B. 100 stamps per sheet (10 rows x 10)

STAMP FORMAT: Horizontal, measuring 30,2 x 23,9mm.

CYLINDERS: Four, cross lined screened. Numbers 633 yellow, 634 rose-red, 635 new blue and 636 pale blue. These coloured numbers, with the pane letter A or B in pale blue are shown on the bottom margin below stamps 9 and 10. Printed on the 841 machine.

SHEET NUMBERS: Six figure black, with an added 0. Are on the bottom margin of both panes below stamp No. 10. The added 0 is on the right margin. The A panes have even numbers, the B panes have odd numbers.

ARROWS: Pale blue, centrally placed on all four margins.

DATE OF PRINTING: Is in black figures 16.09.74. Is on the bottom margin of both panes below stamp No. 8.

/COLOUR REGISTER

COLOUR REGISTER: Consists of two concentric circles divided by a cross, in the colours superimposed. Is on the right margin of pane A opposite row 9.

PERFORATIONS: Internally, gauge 12,5. The top and bottom margins are perforated through; the left and right are imperforate except for a single extra hole at each end of the horizontal rows of perforations.

REGISTER CONTROL MARKS: On pane A it is yellow, 112mm long, and on the top margin running from the left margin up to stamp No. 4. On the B pane it is on the bottom margin below stamps 1, 2, 3 and 4. Its colours, from the left are: red, new blue and pale blue. Every second sheet of the B pane has an extra line, in deep blue with the tiny white holes, on the left.

STEEL PRINTING CYLINDERS: Numbered S8 in pale blue; is on the right margin of both panes opposite row 10.

EDGE WEB CONTROL: Nil.

VARIETIES.

PANE A NIL.

ROW No. PANE B

3 9 Long blue horizontal hairline above tail of fish



14c ROMAN

Cylinders 602. 603. 604. 605. A and B

DESIGN: Shows a single fish facing left, in graduations of orange and red with two yellowish bands, on a light salmon background, in a large panel at the bottom. The colours are heavily superimposed. In a smaller panel, above, are the inscriptions in white “RSA”

on the left and “14c” on the right. In the bottom gutter, in still another deep colour, deep claret, are “Crysolephus laticeps” on the left and “Ernst de Jong 1973” on the right.

PAPER: Harrison, phosphorescent, matt. NO watermark > PVA gum from 304mm wide rolls.

SHEET FORMAT: Horizontal, measuring about 338 x 286mm. Two panes A and B, 100 stamps per sheet (10 rows x 10).

STAMP FORMAT: Horizontal, measuring 30,2 x 23,9 mm.

CYLINDERS: Four, new, cross lined screened, numbers 602 lemon, 603 rose red, 604 pale blue and 605 light orange. These coloured numbers, with the pane letter in orange are shown on the bottom margin below stamp No. 10. Printed on the 841 machine.

SHEET NUMBERS: Are six figure black with an added 0, are on the bottom margin below stamp 10. The 0 is in the right margin. The A pane’s last digit is an odd number. B panes is an even number.

ARROWS: Orange, are centrally placed on all four margins.

DATE OF PRINTING: Is in black figures 01.07.74 on the bottom margin below stamp No. 8.

PERFORATIONS: Internally, gauge 12,5. The top and bottom margins are perforated through, the left and right are imperforate except for the single extra hole are each end of the horizontal rows of perforations.

COLOUR REGISTER: Consists of two concentric circles, divided by a cross in the colours superimposed: is on the right margin of pane B opposite rows 1 and 2.

REGISTER CONTROL MARKS: Are 114mm long and run from the left margin to stamp No. 4 on the A pane is on the top margin in yellow and on the B pane it is on the bottom margin, from left to right the colours are deep claret, with the tiny white holes, then red, blue and orange. The perforated one is missing from every second sheet.

STEEL PRINTING CYLINDER: Shows as S5, in orange, on both panes opposite rows 9 and 10

EDGE WEB CONTROL: Is in varying depths of rose-red along the right margin near the edge of the sheet of both panes. A number of B panes show a broad “shadow” line on the left of the control line, through the arrow and the colour register.

VARIETIES.

PANE A NIL

Row No. PANE B

9 6 Faint white dot in left bottom corner.



15c SUNBIRD

Cylinders 625. 626. 627. 628. A and B

DESIGN: Depicts the greater double collared sunbird in greens, reds, blue, grey and sepias on a curved green perch with a grey background. The inscriptions in white on the left, vertically are “RSA 15c” and in the bottom gutter, in tiny black letters “Nectarina afer” on

the left and “Ernst de Jong 1973 on the right.

PAPER: Harrison, phosphorescent, matt. No watermark. PVA gum from 340mm rolls.

SHEET FORMAT: Horizontal, measuring about 338 x 286mm, two panes A and B, 100 stamps per sheet (10 rows x 10).

STAMP FORMAT: Horizontal, measuring 30,2 x 23,9 mm.

CYLINDERS: Four, new, cross lined screened, numbers 625 lemon, 626 rose-red, 627 blue and 628 light brownish grey. These coloured numbers, with the pane letter A or B in grey are shown on the bottom margin below stamps 9 and 10. Printed on the 841 machine.

SHEET NUMBERS: Are six figure black with an added 0 on the bottom margin below stamp 10. The 0 is in the right margin. The last digit on the A pane is an odd number; on the B pane it is an even number.

ARROWS: Grey, centrally placed on all four margins.

DATE OF PRINTING: Is in black figures 11.07.74, shown on the bottom margin below stamp No. 8.

PERFORATIONS: Internally, gauge 12,5. The top and bottom margins are perforated through, the left and right are imperforate except for the single extra hole at each end of the horizontal rows of perforations.

COLOUR REGISTER: Consists of two concentric circles, divided by a cross, in the colours superimposed. Is on the right margin of pane A opposite row 9. The left bottom quadrant is in red lines.

REGISTER CONTROL MARKS: Are horizontal coloured lines, 112mm long, and run from the left margin to stamp No. 4. On the A pane is lemon coloured, on the top margin; on the B pane is on the bottom margin in four colours; from left to right they are (with the tiny white holes) rose-red, blue and grey. The black is missing from every second sheet.

STEEL PRINTING CYLINDER: Shown as S7 in grey, on the right margin of both panes opposite row 10.

EDGE WEB CONTROL: Is absent from both panes of all sheets examined.

VARIETIES.

PANE A Nil.

Row No. PANE B

1 10 Large white “cloud” at right margin one third down.



20c HORNBILL (YELLOW BILLED)

Cylinders 598. 599. 600. 601. A and B.

DESIGN: A single bird in yellow, black and white, facing right, on a deep stone coloured background. The inscriptions are: “RSA 20c” upwards on the left and in the bottom gutter, in tiny black letter are “Tockus flavirostris” on the left and “Ernst de Jong 1973” on the right.

PAPER: Harrison, phosphorescent, matt. No watermark. PVA gum from 340mm wide rolls.

SHEET FORMAT: Horizontal, two panes A and B measuring about 340 x 287 mm. 100 stamps per sheet (10 rows x 10).

STAMP FORMAT: Horizontal, measuring 30,2 x 23,9.

CYLINDERS: Four, new, cross lined screened, numbers 598 yellow, 599 yellow-brown, 600 grey-black and 601 buff, and these coloured numbers with the pane letter A or B in buff, are shown on the bottom margin below stamps 9 and 10. Printed on the 841 machine.

SHEET NUMBERS: Six figures, black, with the added 0, are shown on the bottom margin of both panes below stamp No. 10, the 0 is on the right margin. The last digit on A panes is an odd number, on the B panes is an even number.

ARROWS: Buff, centrally placed on all four margins.

DATE OF PRINTING: Is in black digits 08.07.74, shows on the left margin of both panes opposite row 8.

/Colour Register:

COLOUR REGISTER: Consists of two concentric circles divided by a cross, in the colours superimposed, is on the right margin of pane B opposite rows 2 and 3.

PERFORATIONS: Internally, gauge 12,5. All top and bottom margins are perforated through, the left and right margins are imperforate except for the single extra hole at each end of the horizontal rows of perforations.

REGISTER CONTROL MARKS: On both panes: 114mm long. (a) on the top margin of pane A from the left margin to stamp No. 4, in yellow. (b) on the bottom margin of pane B, from the left margin to stamp No. 4. The colours from the left are black (broken by tiny white dots), yellow-brown, grey, black and buff. The broken black is missing from some sheets.

STEEL PRINTING CYLINDER: Shows as S3 in buff on the right margin of both panes opposite rows 9 and 10.

EDGE WEB CONTROL: Is a broad band of fine yellow-brown lines running down the sheet along the right margin of both panes. Can be of slightly varying widths. On the A panes seen it is very narrow one with an irregular edge, and on the edge of the sheet.

VARIETIES.

A PANE.

None of recording status but there is a large brown dot near the centre of the margin below stamp No. 7.

B PANE.

Row No.

3 4 White dot at right of bird's breast

4 2 Dark brown dot and smudge at the top right of tip of the bird's tail.



25c BARBERTON DAISY Cylinders 615. 616. 617. 618. A and B.

DESIGN: A fully opened daisy in deep orange and a bud in orange and green on a reddish brown background in a large panel in a fine white frame, below, and in a smaller pane above are "RSA 25c" in white. In tiny brown letters in the bottom gutter are "Gerbera jamesonii" on the left and "Ernest de Jong 19783" on the right. The colours are somewhat sober.

PAPER: Harrison, phosphorescent, matt. No watermark. PVA Gum, from 340mm wide rolls.

SHEET FORMAT: Vertical, measuring about 287 x 339mm. Two panes, A and B. 100 stamps per sheet (10 rows x 10).

STAMP FORMAT: Vertical, measuring 23,9 x 30,2mm.

CYLINDERS: Four, new, cross lined screened, numbers 615 lemon, 616 bright rose-red, 617 pale blue and 618 reddish-brown and these coloured numbers, with the pane letter A or B in brown, are shown on the left margin opposite rows 9 and 10. The lemon colour is barely visible. Only the reddish-brown of the background shows the distinct colour of its cylinder 618. Printed on the 841 machine.

SHEET NUMBERS: Six, figure black with an added 1, are shown on both panes on the left margin opposite row 10 with the added 1 on the bottom margin. The last digit on the A pane is an odd number and that on the B pane is an even number.

ARROWS: Reddish-brown, centrally placed on all four margins.

DATE OF PRINTING: Is in black digits 08.07.74, shows on the left margin of both panes opposite row 8.

COLOUR REGISTER: Consists of two concentric circles divided by a cross, in the colours superimposed. Is shown on the bottom margin of pane B below stamps 9 and 10.

PERFORATIONS: Internally, gauge 12,5. The left and right margins are perforated through; the top and bottom are imperforate except for the single extra hole at each end of the vertical rows of perforations. There is an unusually large number of blind perforations in the printing.

REGISTER CONTROL MARKS: Are on both panes 113mm long, opposite rows 1 to 4 and extending into the top margin. (a) lemon colour on the right margin of pane A and (b) black, red, blue and brown, downwards, on the left margin of pane B. The black is missing from every second B pane.

EDGE WEB CONTROL: Is a rose-red broad band of uneven width running along the bottom margin near the edge of both panes.

STEEL PRINTING CYLINDER: Shows S6 in brown on the bottom margin of both panes below stamps 1 and 2.

VARIETIES.

PANE A Nil.

Row No. PANE B

7 2 Tiny white dot at the left margin just below the centre.



30c BOKMAKIERIES

Cylinder 584. 585. 586. 587.

DESIGN: Two bokmakierie birds facing each other; on the left is one on a branch and on the right is shown its head and shoulders. They are in yellow and shades of grey on a grey background. The inscriptions, in white, are on the left “RSA 30c” vertically upwards. In the bottom gutter, in tiny black letters “Malacomotus zeylonus”

on the left and “Ernst de Jong 1973” on the right.

PAPER: Harrison, phosphorescent, glossy. No watermark. PVA gum, from 240mm wide rolls.

SHEET FORMAT: Vertical, measuring about 240 x 570mm. Single pane, 100 stamps per sheet (20 rows x 5)

STAMP FORMAT: Horizontal, measuring 40,5 x 23,9mm.

CYLINDERS: Four, new, cross lined screened, numbers 584 lemon, 585 rose-pink, 586 slate-black and 587 bluish grey. These coloured numbers are shown on the bottom margin below stamps 4 and 5. Printed on the 841 machine. The lemon colour of the bird's breast is the only distinct one on the cylinder. There are several shades of the birds and which have a silvery sheen.

SHEET NUMBERS: Six figure black with an added 0, are shown on the bottom margin below stamps No. 5. the last digits are even numbers.

ARROWS: Bluish grey, centrally placed on the left and right margins.

DATE OF PRINTING: In black figures 14.02.74 shown on the bottom margin below stamps 3 and 4; the last digit is below stamp 4.

COLOUR REGISTER: Consists of two concentric circles divided by a cross, in colours superimposed. Is on the left margin opposite rows 2 and 3. The left bottom quadrant is very faint; it appears to be in the lemon colour.

PERFORATIONS: By the Grover two row machine, gauge 11,75 x 12,5. The top and bottom margins are imperforated through; the left and right are imperforate except for the single extra hole at each end of the horizontal rows of perforations. Some sheets show a trace of these extra holes down the edge of the left margin.

REGISTER CONTROL MARKS: Are coloured horizontal lines, each 24mm long on the bottom margin below stamps 1, 2 and 3. From left to right they are bluish grey, slate-black and rose-pink. Some sheets have an added line on the left extending into the left margin; this line is 33mm long, is blue-black with tiny white holes.

STEEL PRINTING CYLINDER: Shown as a faint S1 in bluish grey on the right margin opposite row 20.

EDGE WEB CONTROL: This is a broad band of fine pink lines running down the sheet parallel with and close to the right edge of the sheet.

VARIETIES:

Row No.

4 3 White dot to left of the head of bird on the left.

17 5 Dark dot at the right foot of R of RSA.

NOTE: The colours of the stamps have a metallic sheen so many stamps show irregular marks, possibly caused by rubbing, but they are not constant.



50c BLUE CRANES

Cylinders 606. 607. 608. single pane

DESIGN: Shows two birds facing left, in greys and blues, with orange beaks on an olive-bistre background. The inscriptions in white are on the left, vertically “RSA 50c”. In the bottom gutter in tiny blue letters are “Tetrapterys paradisea” on the left, and “Ernest de Jong 1973” on the right.

PAPER: Harrison, phosphorescent. No Watermark. PVA Gum. From 340mm wide rolls.

SHEET FORMAT: Vertical, measuring about 235 x 509mm. Single pane. 100 stamps per sheet (20 rows x 5).

STAMP FORMAT: Horizontal, measuring 40,5 x 23,9mm

CYLINDERS: Three, new, cross lined screened numbers 606 grey, 607 light red-orange and 608 light olive-bistre and these coloured numbers are shown on the bottom margin below stamps 4 and 5. Printed on the 841 machine.

SHEET NUMBERS: Are six figure black, with an added 0 on the bottom margin below stamp No. 5; the 0 is on the right margin. The last digit on all sheets seen is an even number.

ARROWS:

ARROWS: Olive, centrally placed on the left and right margins.

DATE OF PRINTING: In black figures 22.08.74 on the bottom margin below stamp No. 3.

COLOUR REGISTER: Consists of two concentric circles divided by a cross in the colours superimposed. Is on the right margin opposite row 19.

PERFORATIONS: By the Grover two row machine, gauge 11,75 x 12,5. The top and bottom margins are perforated through, the left and right are imperforate except for the single extra hole at each end of the horizontal rows of perforations.

REGISTER CONTROL MARKS: Are on the bottom margin, from the left margin to stamp No. 2. From the left to right margin the colours are blue-black (with tiny white holes), olive and orange. The blue-black is present on every second sheet.

STEEL PRINTING CYLINDERS: Shows as S4 in olive, on the right margin opposite row 20.

EDGE WEB CONTROL: Nil.

VARIETIES.

There are no constant varieties but a number of sheets show blue smudges in the bottom gutter of the stamps but these are not constant.



R1 BATALEUR EAGLES. Cylinders 591. 592. 593. 594.

DESIGN: The two birds are shown in a large panel on the right, facing each other. On the right is the bird standing and on the left is shown its head and shoulders. In a smaller panel on the left are the inscriptions in white, vertically upwards “RSA R1”. In the bottom gutter in tiny black letters are “Terathopus ecaudatus” on the left and

“Ernst de Jong 1973” on the right.

PAPER: Harrison, phosphorescent, glossy. No watermark. PVA gum from 240mm wide rolls.

SHEET FORMAT: Vertical, measuring about 236 x 570mm. Single pane, 100 stamps per sheet (20 rows x 5).

STAMP FORMAT: Horizontal, measuring 40,5 x 23,9mm.

CYLINDERS: Four, new, cross lined screened, numbers 591 buff, 592 reddish orange, 593 slate and 594 light orange-brown and these coloured numbers are shown on the bottom margin below stamps 4 and 5. With the exception of the brown of the background the other colours are superimposed giving strongly contrasting new colours, particularly the deep brown and deep orange of the head of the bird. Printed on the 841 machine.

SHEET NUMBERS: Six figure black with an added 0; are on the bottom margin below stamp No. 5. All sheets examined have the last digit an even number.

ARROWS: Brown, centrally placed on the left and right margins.

DATE OF PRINTING: Shows in black digits 08.02.74 on the bottom margin below stamps 3 and 4, the last digit is below stamp 4.

COLOUR REGISTER: Consists of two concentric circles divided by a cross in the colours superimposed. Is on the right margin opposite rows 2 and 3.

PERFORATIONS: By the Grover two row machine, gauge 11,75 x 12,5. The top and bottom margins are perforated through, the left and right are imperforate except for the single extra hole at each end of the horizontal rows of perforations. Some sheets show a trace of these extra holes down the edge of the left margin.

REGISTER CONTROL MARKS: Are coloured horizontal lines each 24mm long on the bottom margin below stamps 1, 2 and 3. From left to right they are brown, slate and orange. On some sheets there is an extra one on the left in blue-black.

STEEL PRINTING CYLINDER: Shown by the S2 in brown on the right margin opposite row 20.

EDGE WEB CONTROL: The sheets examined are narrower than those of the 30c and do not show the broad coloured bars down the right margin. It is possible that they have been trimmed off.

VARIETIES.

Row No.

6 1 Tiny white dot at the centre of the white frame line after RSA.

Acknowledgements: South African Study Circle.

If any Member would like these reference sheets, which are being printed in two parts in the Springbok, as a booklet. I can supply them in one as an email, for you to print or as a hard printed copy. The latter at a small fee. Ed.

Denomination Design	Paper Surface	Sheet Format mm	Stamp Format mm	Cylinders	Sheet Numbers	Arrows	Dates Seen	Colour Register Visual	Step Wedges	Densit Colour Patches	Perforations	Register Control Marks	Steel Printing Cylinder	Edge Web Control
1c Iris Flower	Matt	Vertical 285 x 340	Vertical 23.9 x 30.2	648. 649. 650. 650. A & B	Opp. Row 10 A - odd B - even	Brown rose all four margins	03.09.74	Pane A Below stamp 2	Nil.	Nil.	Internal gauge 12.5	A - right lemon B - left 3 or 4 colours	S10 Brown-rose A & B Below stamp 1	Nil.
2c Heath Flower	Glossy	Vertical 275 x 340	Vertical 23.9 x 30.2	556. 557. 558. 559. A & B	Opp. Rows 7.8 A - even B - odd	Yellow all four margins	22.10.73	Pane b Above stamps 8.9	Nil	Nil	Internal gauge 12.5	A - right yellow B - left 4 colours	Nil	Nil
3c Geranium Flower	Glossy	Vertical 287 x 339	Vertical 23.9 x 30.2	542. 541. 540. 539. A & B	Opp. Rows 3.4 A - even B - odd	Lake all four margins	10.09.73 01.10.73	Pane B Above stamps 8.9	Blue Pane A Opp. Row 8.9	A - right B - left 4 colours Opp. Rows 3.4	Grover two row Gauge 11.75 x 12.5	A - top and bottom B - bottom	Nil	Bright rose A & B bottom margin
4c Arum Lily Flower	Glossy	Vertical 275 x 340	Vertical 23.9 x 30.2	560. 561. 562. 563. A & B	Opp. Row 10 A - even B - odd	Green all four margins	29.10.73 01.11.73 30.10.73	Pane B above stamps 8.9	Nil.	Nil.	Internal Gauge 12.5	A - right Yellow B - left 3 or 4 colours	Nil.	Pale rose A & B Bottom margin
5c Gannet Bird	Matt	Horizontal 338 x 285	Horizontal 30.2 x 23.9	568. 570. 571. A & B	Below stamp 10 A - odd B - even	Azure all four margins	24.04.74 06.05.74	Pane B Opp. Rows 2.3	Nil.	Nil.	Internal Gauge 12.5	A - top yellow B - bottom 2 or 3 colours	S6 Azure A & B right Opp. Rows 9,10	Deep blue A - right B - absent
6c Galjoen Fish	Glossy	Horizontal 340 x 289	Horizontal 30.2 x 23.9	564. 565. 566. 567. A & B	Below stamp 10 A - even B - odd	Turquoise-green All four margins	20.12.73 21.12.73	Pane A Opp. Rows 1.2	Nil.	Nil.	Grover two row Gauge 12.5	A - Top yellow B - bottom 3 or 4 colours	Nil.	Bright rose A & B Right margin
7c Zebra Fish	Glossy	Horizontal 338 x 278	Horizontal 30.2 x 23.9	510. 509. 508. 507. A & B	Below stamp 7.8 A - odd B - even	Mauve All four margins	07.06.73 08.06.73 11.06.73	Pane B Opp. Rows 2.3	A - top Rosine B - bottom blue and orange	A - Top B - bottom 4 colours stamps 1 to 4	Grover Two row Gauge 12.5	A - right B - right A - 2 colours B - 2 or 3 colours	Nil.	Rosine A & B Right margin
9c Angel Fish	Matt	Horizontal 338 x 287	Horizontal 30.2 x 23.9	637. 638. 639. 640. A & B	Below stamp 10 A - odd B - even	Stone All four margins	12.09.74	Pane A Opp. Row 9	Nil.	Nil.	Internal Gauge 12.5	A - top lemon B - bottom 3 or 4 colours	S9 Stone A & B right opp. Row 10	Nil.

Summary of RSA 2nd Definitive 1cent - 9cent

Denomination Design	Paper Surface	Sheet Format mm	Stamp Format mm	Cylinders	Sheet Numbers	Arrows	Dates Seen	Colour Register Visual	Step Wedges	Densit Colour Patches	Perforations	Register Control Marks	Steel Printing Cylinder	Edge Web Control
10c Moorish Idol Fish	Matt	Horizontal 340 x 286	Horizontal 30.2 x 23.9	633. 634. 635. 636. A & B	Below Stamp 10 A - even B - odd	Pale blue All four margins	16.09.74	Pane A Opp. Row 9	Nil	Nil	Internal Gauge 12.5	A - Top yellow B - bottom 3 or 4 colours	S8 Pale blue A & B right Opp. Row 10	Nil. Rose-red A & B right margin
14c Roman Fish	Matt	Horizontal 338 x 286	Horizontal 30.2 x 23.9	602. 603. 604. 605. A & B	Below Stamp 10 A - odd B - even	Orange All four Margins	01.07.74	Pane B Opp. Rows 1.2	Nil	Nil	Internal Gauge 12.5	A - Top yellow B - bottom 3 or 4 colours	S5 Orange A & B Opp. rows 9 & 10	Rose-red A & B right margin
15c Sunbird	Matt	Horizontal 338 x 286	Horizontal 30.2 x 23.9	625. 626. 627. 628. A & B	Below Stamp 10 A - odd B - even	Grey All four Margins	11.07.74	Pane A Right Opp. 2.3	Nil	Nil	Internal Gauge 12.5	A - Top lemon B - bottom 3 or 4 colours	S7 Grey A & B Opp. Row 10	Nil.
20c Hornbill Bird	Matt	Horizontal 340 x 287	Horizontal 30.2 x 23.9	598. 599. 600. 601. A & B	Below Stamp 10 A - odd B - even	Buff All four Margins	12.06.74	Pane B Right Opp. Rows 2.3	Nil	Nil	Internal Gauge 12.5	A - Top yellow B - bottom 4 or 5 colours	S3 Buff A & B Opp. Rows 9 & 10	Yellow-brown A & B Right margin
25c Barbeton Daisy	Matt	Vertical 287 x 339	Vertical 23.9 x 30.2	615. 616. 617. 618. A & B	Opp. row 10 Suffix A - odd B - even	Red-Brown All four Margins	08.07.74	Pane B Bottom below stamps 9,10	Nil	Nil	Internal Gauge 12.5	A - right lemon B - left 3 or 4 colours	S6 Brown A & B Below stamps 1.2	Rose-red A & B Bottom margin
30c Bokmakierie Bird	Glossy	Vertical 240 x 570	Horizontal 40.5 x 23.9	584. 585. 586. 587. Single Pane	Below stamp 5 All even	Bluish-grey Left & right Margins	14.02.74	Left mar- gin Opp. Rows 2.3	Nil	Nil	Grover two row Gauge 11.75 x 12.5	Bottom margin Below stamps 1.2.3 3 or 4 colours	S1 Bluish-grey Right margin Opp. Row 20	Pink Right margin
50c Blue Cranes	Matt	Vertical 235 x 509	Horizontal 40.5 x 23.9	606. 607. 608 Single Pane	Below stamp 5 All even	Olive Left & right Margins	22.08.74	Right margin Opp. Row 19	Nil	Nil	Grover two row Gauge 11.75 x 12.5	Bottom margin Left to stamp 2 2 or 3 colours	S4 Olive Right margin Opp. Row 20	Nil.
R1 Bataleur Eagles	Glossy	Vertical 236 x 570	Horizontal 40.5 x 23.9	591. 592. 593. 594. Single Pane	Below stamp 5 All even	Brown Left & right Margins	08.02.74	Right margin Opp. rows 2.3	Nil	Nil	Grover two row Gauge 11.75 x 12.5	Bottom margin Below stamps 1.2.3 3 or 4 colours	S2 Brown Right margin Opp. Row 20	Nil.

Summary of RSA 2nd Definitive 10cent - R1

Revisiting Union Roll Stamps in Sheet Form
By Mike Tonking RDPSA

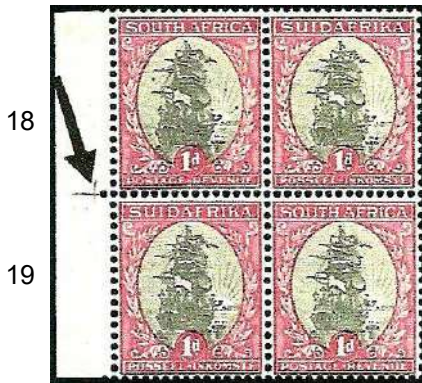
During the Union period seven of the twenty eight roll stamp issues appeared in sheet form. These are of particular interest on account of the cylinder transpositions which occurred during printing. Stamps surplus to requirements for roll stamps were cut into sheets each of 240 stamps (20 rows of 12). The sheets were issued without bottom or top margins although the side margins were left intact. In some cases the study of the roll stamp sheet issues made it possible to identify printing cylinder transpositions. A brief description of all seven sheet issues follows:

R12S - 1d. Value 1934 - Unhyphenated rotogravure. Figs. 1 and 2

This was the first roll stamp to be issued in sheet form and had pale grey vignettes and pale carmine rose frames. A thin irregular red cross was printed in the left margin between rows 18 and 19. Since there was no interior cylinder marginal mark regular cylinder transpositions occurred. The watermark was generally upright and those with inverted watermark are rare.

Figs. 1 and 2

Red cross in left margin
opposite rows 18 and 19.



Row 18/1 - Red dot between left
yardarms. Black dot in sunrays.



R14S - 1/2d. Value 1935 - First Hyphenated Issue. Figs. 3 and 4.

At least three different printings are known each with different cylinder transpositions. For some unknown reason the printing cylinders were reversed resulting in the sheet numbers being printed in the left instead of right margin. This was the only time in the sheet roll stamps that this occurred. In order to accommodate the Grover single row perforator the cylinders were etched to allow for a narrow gutter between stamps 6 and 7 of each row. A short green line was printed in both margins between rows 21 and 22.

Figs. 3 and 4 R14S

Green line in right margin
between rows 21 and 22
Row 21 with darker frame



Four figure black sheet number in
left margin opposite rows 15 and



Cont'

R15S - 1d. Value 1935 - First Hyphenated Issue. Figs. 5 and 6

As in the case of the R14S ½d. Issue the sheet layout was again printed with a narrow gutter between stamps 6 and 7 of each row and the perforation was again 13,5. Short red lines were printed in both margins between rows 21 and 22. Since the sheets were not always guillotined along these lines it is uncertain as to the reason for them. Rows 3 and 4 were re-used for rows 21 and 22. No cylinder transpositions are known.

Figs. 5 and 6
Short red lines in left and right margins
Deeper etching of row 21 gives darker vignette.



R17S - ½d. Value 1940 - Second Hyphenated Issue. Figs. 7 and 8

As in the case of the two previous issues a twenty row multipositive was used and rows 11 and 12 were re-used for rows 21 and 22. Short black lines were printed in left and right margins 10 rows apart in one direction and 12 in the other. Since there was no exterior cylinder marginal marks there were numerous cylinder transpositions, normally over an even number of rows. Black five figure sheet numbers were printed in the right margin.

Figs. 7 and 8
Examples of interior cylinder marginal marks 10 rows apart



R19S - 1d. Value January 1937 - Second Hyphenated Issue. Fig. 9

This roll stamp sheet issue was by far the rarest of all seven issues as only about 500 sheets were sold. Rows 5 and 6 were re-used for rows 21 and 22. Short black and red lines were printed in the left and right margins opposite the centre of row 22. There were two cylinder transpositions recorded.

Fig. 9 R19S
Short black and red lines in both margins below row 21 junction



R20S - 1d. Value June 1940 - Second Hyphenated Issue. Fig. 10

With about 5000 sheets sold this issue is not considered to be that scarce. Row 17 and 18 were re-used for rows 21 and 22. Short black and red lines superimposed on each other were printed in the left and right sheet margins 2mm below the junction of rows 21 and 22. The bright red frame colour serves to identify this issue. There were no cylinder transpositions apart from one very rare one which occurred over three rows.

Fig. 10 R20S
Black and red superimposed lines in both margins below row 21 junction.



Fig. 11 R26S
Strip showing printer's guide line in right margin between rows 22 and 1



Stamps in row 1
offset to right

Single sheet
number

R26S - 1d. Value October 1960 - Animal Series.
Fig. 11

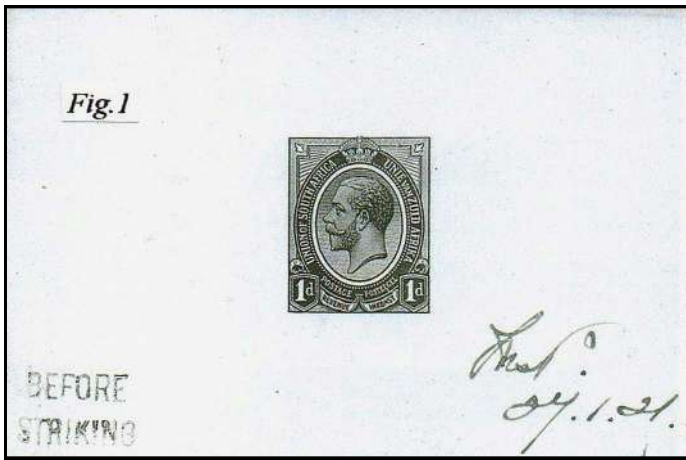
This was the last roll stamp to be issued in sheet form. It was printed from cylinder 97 which was made from a 22 row multipositive of which only rows 2 to 21 were used. A short brown line was printed in the right margin between rows 22 and 1. This line was absent on earlier printings. Five figure black sheet numbers were printed in the right margin opposite every eleventh row. Since there were only 20 rows in the sheet and the sheets were not always guillotined in the same position, either a single number, a double set of similar or a double set of consecutive numbers appeared on each sheet

Reference:
The Stamps of the Union of South Africa 1910-1961 - S.J. Hagger

Auction Report - February 2017

By Tony Howgrave-Graham

Various people have commented to me that they miss the auction reports. The gap since the last one is partly due to there having been no very significant auctions since, other than the Bloom sale when Otto beat me to a report.



Spink had a sale on 26 January, however, that I think deserves notice. It contained some very good, if rather esoteric, material. The sort we dream about but can't afford! The South West Africa was attributed to Freddie Herzberg and this, in particular, was fantastic. I've never seen so many £1 stamps offered in one go before. It all attracted 5% VAT on top of the usual, and not inconsiderable, buyers' costs. The figures I give as realisations, unless otherwise mentioned, are approximately what it would have cost you to buy a particular lot.

I suspect that much of the South Africa originated from the same source. This started with the King's head proofs (e.g. Fig. 1). They were all over-estimated



at £1,500-£2,000 each and most were hammered down at the £1,100 reserve or bought up afterwards at this. The top hammer price was £1,500. I can remember the not too distant past when they only made a tenth of this. Their prices considerably outweigh their scarcity. The cost had you bought them would have been £1,400 to £1,900 each!



The colour trials (Fig. 2) are probably scarcer and usually make more than the proofs. They were snapped up more quickly but ended up making exactly the same depending on their condition. Sticking with the King's heads a block of 4 of the ½d dark mossy emerald green, um, made £1,670. A 5/- & 10/- with gutter attached and each showing the missing jubilee line but both lightly toned, only made a half estimate £190. A "fine mint" 10/- with inverted watermark on the other hand was estimated £3-4,000 and ended up costing £11,500! A fine corner control block of 4 of the same value made a double estimate £1,900 and a corner control pair of the £1 green and red, mounted in margin only, £1,670. A control pair of the olive green & red (with a small marginal thin and some marks on the gum) made £1,400.



Moving on to the 1926-30 typo & recess issues a vertical pair of 1d ex booklet with sideways watermark, catalogued £5,500, looked good value at £650 despite having light toning. Another good looking buy was the fine mint inscriptional block of 4 of the 4d (Group 2) with inverted watermark, thought to be one of only two available it cost £1,900. The imperforate (though perforated "SPECIMEN") colour trials (Fig. 3) are always popular and were very underestimated. The 2/6 made four times estimate costing £1,000 and the 10/- £750 with no apparent reason for the difference other than the vagaries of auction. Turning to the 1929 air pair two enlarged proofs of the 1/- in black on glazed paper made £1,800, the more usual 4d & 1/- proofs in black £620 and the set of five colour trials of the 1/- on the back of old land charts, £350. The 4d & 1/- with large specimen overprints of a type I've not seen before made £360 despite the 1/- looking rather messy.

We now come on to the unhyphenated rotogravure. The ½d tête-bêche pair in a strip of 3, mounted mint, made £520 and the 1d equivalent £575. A 2d marginal tête-bêche pair mounted in the margin only but gum wrinkling only made reserve at £4,500. My main interest was in two 3d items. A block of 6 with the bottom pair almost entirely missing its centres (Fig. 4) sadly reached more than I had

available at £1,300 and a pair with almost entirely missing frames (Fig.5) made £270. I was placed in trouble by another senior member for not bidding further on this but it did have a large tear (though this was difficult to see).



By my reckoning a large tear reduces value by 90%, hence my reluctance though I confess, I harbour some regrets!

We seem to talk about the 1963 Red Cross Centenary 12½c with missing red (i.e. the cross) (Fig.6) every time I report. Another copy came up. It's catalogued £4,500. It was estimated at what I thought was a ridiculously high £4-5,000.



Again Spink stated it was 1 of 2 known mint copies whereas, in fact, there are at least a dozen reported. We'll have to be kind and suggest it was a "typo", albeit repeated. At Spink last April it had a hammer price of £4,800, so the best part of £6,000 with commission. So, what does it make 10 months later? £7,500 if bought by a UK buyer! The buyer was on the internet. A nice block of 4 of the 1964 SA



Nursing Association 12½c with the 2 lower stamps missing yellow made even more at £9,000! The less dramatic 1961-3 12½c protea definitive with missing yellow (Fig.7) fared less well making just over £1000.

The 2d officials SGO35 and O44a continue to amaze as well. SGO35 made £2,600 and SGO44a £490! - They are of absolutely equal rarity and visual appeal!

So, now on to the South West Africa - the named Freddie Herzberg collection. I gather he owns a game reserve in Namibia and has reputedly the finest collection of South West African postal history extant. I would love to see this. I was particularly interested to see how this sold as, although the earlier SWA stamps seem to have an active market, the postal history, fascinating as it is, is rather in the doldrums at the moment with the John Sussex collection struggling to sell in several auctions and many of the realisations only being half what they were a few years ago.



So let's look at two lots - first was a postal history item - a grossly contrived cover by Herbert Busch which he sent to himself (Fig.8). It is franked with a Transvaal ½d, the Union 2½d commemorative and 2d definitive. The first two are scarce used in SWA and their use is mostly a bit, or entirely, philatelic. The cover is cancelled by the Outjo converted wanderstempel with the registration cachet the usual temporary one of the time. The envelope was deemed posted out of course and attracted 4d in tax with postage dues added to the back. So, all in all, a bit of a curio and quite fun but with little real postal history interest. Busch covers usually only make about

half non-Busch so I thought the £3-400 estimate very optimistic indeed. It made £840!!

Next let's look at the 1923 1st setting set of specimens in pairs - really, really rare. It was estimated, if anything, cheaply at £3-4,000. It sold at the reserve hammer price of £2,300 (just under £3,000 with add ons). Shows that, as usual, my general comments above were disproved in a matter of minutes! In fact, I suspect, many people like myself who collect this issue have the set in singles and don't want to spend a huge amount on pairs which would leave a spare set of singles which cost them the best part of £1,000.

Auctions are strange affairs and it's difficult to predict what will happen. As the auction progressed it became clear that the showpiece items were going to be split between a phone bidder & one on the internet, both of whom bid things up to the sky. Unfortunately the phone bidder seemed to take ages between each bid and the whole thing became desperately slow, so much so that I had to leave half way through and check realisations later. Why he had to take 40 seconds to decide whether to bid £2,200 over £2,000 when he seems to have been prepared to go up to £10,000 I shall never know - and the same at every bid! Anyway, staying with the 1923 1st setting overprints a corner block of 16 (8 pairs) of the 2d with overprint inverted made £3,000. A control pair of the 10/- (a rarity)

was very underestimated at £1-1,200 and was probably still good value at its £3,350. A corner plate block of 12 (6 pairs) of the £1 made £13,000 and a control pair (*Fig.9*) with the "SOU" of South slightly raised made a 5 times estimate £6,200! Without the phone v internet bidding things returned to something nearing normality with a £1 marginal pair with the overprint placed higher on the second stamp making £580 and 3 other £1 pairs with minor varieties making £350, £260 & £320.

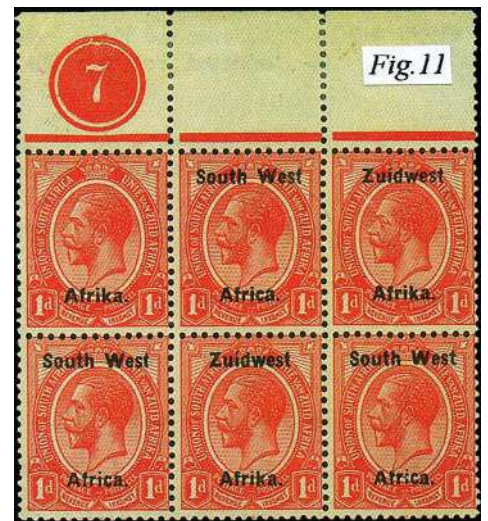


Of the 2nd setting the four corner control pairs of the 5/- made £3,600 and a 5/- pair, one with no stop after "a", £970. With the 10/- a corner control block of 4 made £900 (slight toning) whilst a control pair made £1,800! A marginal block of 4 with one stamp showing the "no stop" variety made £2,600. A £1 control pair only mounted in the top margin

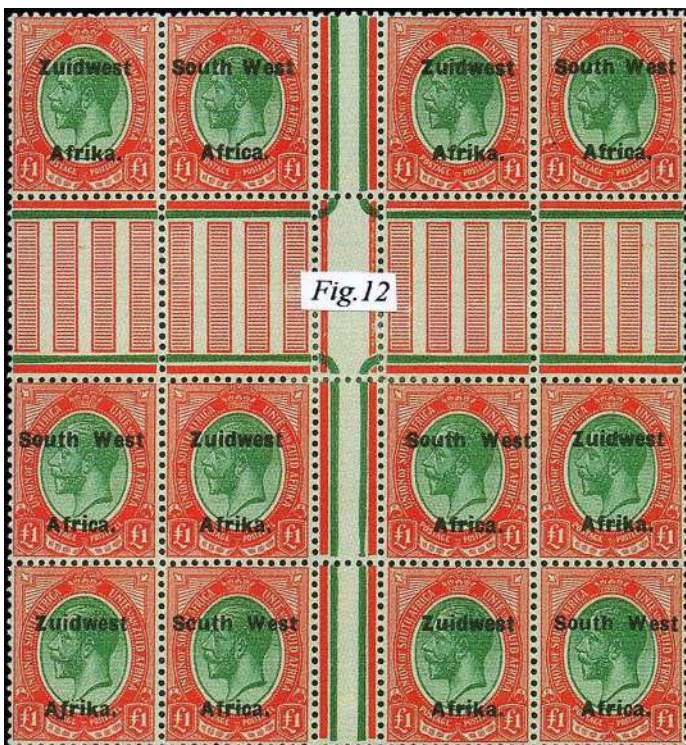
climbed to a crazy five times estimate with a hammer price of £5,000 (£6,500 to you & me!!). The whole process took several minutes before the phone bidder eventually secured it. Probably still in shock he failed to push on the £1 with "no stop" variety which went to the internet bidder at the reserve of £3,750.



On to the 3rd setting and nice control blocks of 8 of the 5/- and 4 of the 10/- both went at, or near, reserves at £540 and £1,000. A stupendous showpiece item, a complete lower left pane of 60 (30 pairs) of the £1 got our two friends bidding again. It was estimated £8-10,000. It crawled up and up until eventually being knocked down to the internet



bidder for £20,000 (£26,000 with commission and VAT). A couple of interesting items from the thin lettering overprints were 1d pairs with "South West" or "Zuidwest" omitted. With the first (*Fig.10*) it's very easy to see what caused the omission. Estimated £3-400 it made £2,300! With the second (*Fig.11*) it's hard to establish the reason but estimated £4-500 it made £1,680 with the phone bidder being successful again. Another surprise was a 4d pair with inverted watermark which made over three times estimate at £3,200! A lovely corner control block of 8 of the £1 made £2,700.



A gorgeous 4 pane item from the setting VI £1 (*Fig.12*) again made 3 times estimate at £5,250. The four corner control blocks of 4 of the £1 olive green and red made a reasonable £2,850, much better value than a left interpanneau block of 8 which, though very nice, made £2,600. A block of 6 with gutter margin, one showing the missing jubilee line, looked good value at £540.

Moving on the 1931 pictorials a set of colour trials (*Fig.13* for 5/-, 10/- & 20/-) made just over £10,000 and the air pair £1,900 (*Fig.14*). An inscriptional block of 4 of the 2d with inverted watermark is stated to have had a hammer price of £15,000!! Catalogued £1,700+ and estimated £800-1,000 I can't help feeling this was a misprint for £1,500.

Finally the 1923 setting II 1d postage due. It is very rare but it's not very beautiful! (*Fig.15*). I reported this in 2005 when it made £9,200 which was more than full catalogue then. It's now catalogued £16,000 and again it made over full catalogue with a hammer price of £18,000 (£23,000

to you & me!). How the other half live! If I had a spare £23,000 I think I'd look for something prettier to spend it on but like as not it wouldn't be as good an investment. It's really quite extraordinary how the top end of the market continues to climb whilst the sort of material you & I own, or aspire to own, continues to plummet. Oh well, happy collecting and let's concentrate on the interesting, slightly different and cheap!!



O

The Bible Stamp that was never Printed by Roy Ross

This 25c stamp is not to be confused with the 40c bible stamp that was printed but was withdrawn. Bulletin 196 shows a 25c bible stamp but the value was changed before the stamp was printed, also shows a 20c and 30c.

The printed 40c stamp and all the FDCs, along with other philatelic items were withdrawn by the Minister of Works and Communications, Mr Stoffel Botha, three days before the issue was due.

Sources suggest that the objection to the stamp was two fold:

- If the stamp was defaced by a postal canceller, it would be a mutilation of the Word of God.
- If such stamps on used envelopes landed in wastepaper baskets, and were thrown away along with other trash, it would be a desecration of the Word of God.

An urgent signal was sent to almost 2,000 post offices and postal agencies worldwide. A total of 1,750,000 stamps were printed. At Philatelic Services, 100,000 had been affixed to FDCs and 28,000 on Maxi Cards. None of these were issued. New FDCs were hurriedly printed and the three remaining stamps of the set were affixed.

A small number of FDCs and the 40c stamp are known to have been sold, the latter over Post office counters in the Cape Peninsula. Pre issue sales at other offices are also claimed.



25c Not printed



40c Printed

Note: The bulletin gives the values as 16c, 20c, 25c and 30c.
The issued stamps were 16c, 30c, 40c and 50c

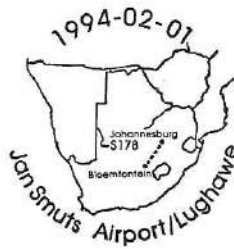
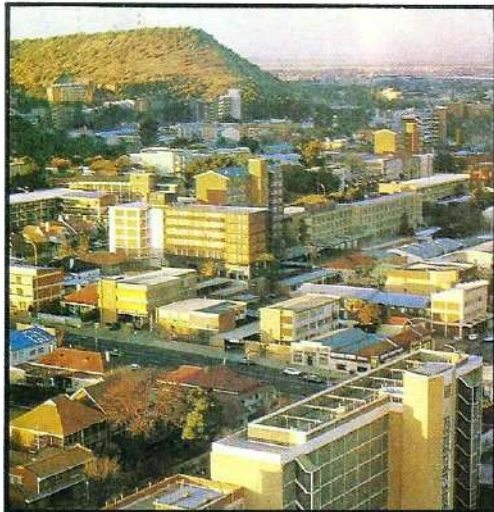
Sixty Years of South African Airways Flights

By Roy Ross

In 1994 South African Airways celebrated 60 years of flight and to mark this event the postal authorities produced a series of envelopes. It was my good fortune to spot these envelopes recently on a well know auction site and having put in a ridiculously low bid won them. There are 45 envelopes in the set all depicting the different air routes that SAA fly too.

Each card has a different date stamp and within these are maps of the destinations as shown in the card below. The reverse of the cards has the same wording in both languages with some flight history. All the cards are stamped with the arrival dates and all signed on the back, with what I presume is the signature of the Pilot. I am sure that someone will correct me if I am wrong.

All the stamps on these cards are from the 1993 Aviation in SA sheet of 25 different stamps. SACC 7779-803



SAL SAA
SOUTH AFRICAN AIRWAYS · SUID-AFRIKAANSE LUGDIENS
Johannesburg - Bloemfontein



Manager for Orange
Free State
Liberty Life Building
Cnr Kerk and
St Andrews Streets
BLOEMFONTEIN
9301

SESTIG VLUGJARE

Die totstandkoming van die Suid-Afrikaanse Lugdiens op 1 Februarie 1934 het 'n nuwe era in die ontwikkeling van handelslugvaart in Suid-Afrika ingelui.

Teen 1947 het die oorspronklike vloot van sewe eenmotorige vliegtuie tot 41 aangegroei en het die Suid-Afrikaanse Lugdiens binnelandse, inter-Afrika- en buitelandse vlugte bedryf.

Gedurende die daaropvolgende jare het die redery se roetenet vinnig uitgebrei om bestemmings in sommige van die belangrikste stede in Europa en Australië in te sluit. Teen 1980 het die Suid-Afrikaanse Lugdiens gereelde en gerieflike dienste na alle uithoeke van die wêreld aangebied — die Verenigde Koninkryk, Europa, Noord- en Suid-Amerika, Australië en die Verre Ooste.

Hoewel die instelling van sanksies teen die Republiek van Suid-Afrika in 1986 en die Golfoorlog van 1991 'n nadelige uitwerking op die redery gehad het, kon die Suid-Afrikaanse Lugdiens nietemin ook nuwe geleenthede benut. Die vergunning van oorvlugreg oor Mali, Mauritanië en Morokko het die gebruik van die Wesroete oor Afrika moontlik gemaak. Nadat oorvlugregte deur Egipte en die Soedan toegestaan is, kon die Oosroete oor Afrika op 8 September 1991 ook die eerste keer in 28 jaar gebruik word.

Teen die einde van 1991 en die begin van 1992 het die regerings van die VSA en Australië die sanksies begin ophêf. Dit het die redery in staat gestel om sy tradisionele markte wat nadelig deur die sanksies beïnvloed is, te herwin.

Tans onderneem die Suid-Afrikaanse Lugdiens se vloot van 50 moderne vliegtuie vlugte na nege binnelandse bestemmings, 12 bestemmings in Afrika en die Indiese Oseaan-eilande, en 22 internasionale bestemmings wêreldwyd.

SIXTY YEARS OF FLIGHT

The birth, on 1 February 1934, of South African Airways, heralded a new era in the development of commercial aviation in South Africa.

By 1947, the initial fleet of seven single-engined aircraft had grown to 41 aircraft and South African Airways was operating domestically, regionally and internationally.

Over the next few years, the airline's route network rapidly expanded to include some of the major cities of Europe and Australia. By 1980, South African Airways provided regular and convenient services to all corners of the earth — the United Kingdom, Europe, North and South America, Australia and the Far East.

Although the introduction of sanctions against the Republic of South Africa during 1986 and the Gulf War of 1991 had a negative effect on the airline, new opportunities, nevertheless, opened up during this time. South African Airways was granted over-flying rights via Mali, Mauritania and Morocco, using the Western route over Africa. This was followed by the granting of over-flying rights from Egypt and the Sudan, and on 8 September 1991, this Eastern route over Africa was used for the first time in 28 years.

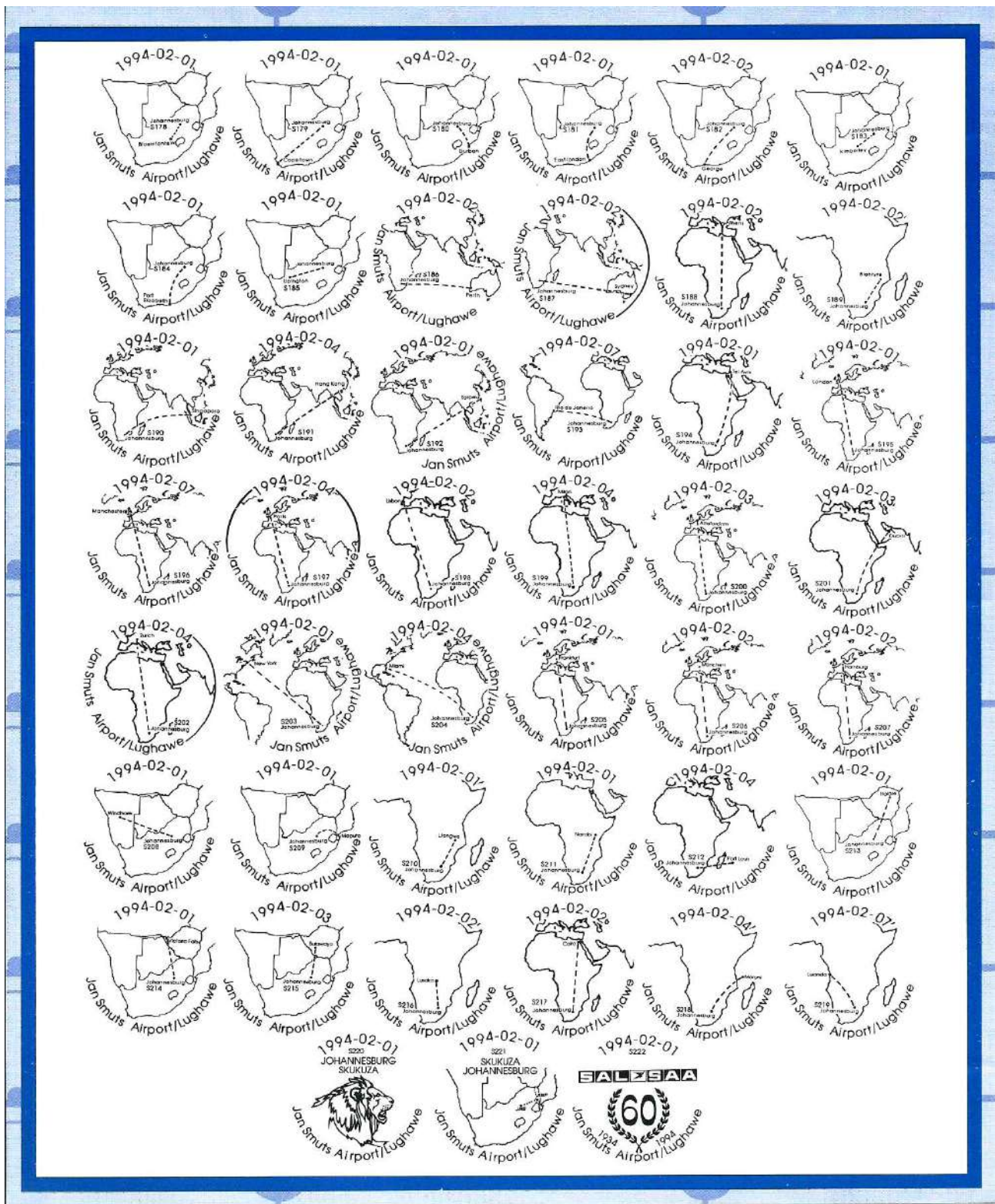
Late 1991 and early 1992 saw the lifting of sanctions by the governments of the USA and Australia, enabling South African Airways to recapture all of its traditional markets which were previously adversely affected by sanctions.

Today, South African Airways's fleet of 50 modern aircraft operates flights to nine domestic destinations, 12 destinations within Africa and the Indian Ocean Islands, and 22 international destinations worldwide.

Handwritten signature in blue ink.



Reverse of Envelopes



The image shows the destinations that SAA fly to, from Jan Smuts Airport Johannesburg and are dated from 01.02.1994 - 07.04.1994

Within South Africa - Bloemfontein, Cape Town, Durban, East London, George, Kimberly, Port Elizabeth, Upington, Skukuza,

Africa - Windhoek (Namibia), Maputo (Mozambique), Harare (Zimbabwe), Victoria Falls (Zimbabwe), Bulawayo (Zimbabwe), Lusaka (Zambia), Lilongwe (Malawi), Luanda (Angola), Nairobi (Kenya), Blantyre (Malawi), Port Louis (Mauritius), Moroni (Comoros), Cairo (Egypt),

Rest of World - Dubai, Tel Aviv (Israel), Singapore, Hong Kong, Taipei (Taiwan), Perth (Australia), Sydney (Australia), Rio De Janeiro (Brazil), Miami, New York (USA),

Europe - Milan (Italy), Lisbon (Portugal), Paris (France), Frankfurt (Germany), Munich (Germany), Hamburg (Germany), Amsterdam (Holland), London (England), Manchester (England), Athens (Greece), Zurich (Switzerland)

London 4 November 1910 Cancellation to Union Stamp by Lyn & Rob Lester

As a number of Society members know one of our collecting specialisations is the date stamp 4th November 1910 applied to the Union stamp, commemorating its first day of issue.

Recently we placed a bid on an auction lot which was described as having four first day cancellations along with a number of used and unused Union stamps in blocks and single format. From the scan we had requested from the auction house a rather poor image of the first day cancellations arrived, which were of sufficient detail to establish that three of the first day cancellations were ones we had not seen before and did not form part of our collection. The last one, described as from 'East London' was difficult to view and unclear. So after much deliberation and partly because there was no buyers premium, we placed a bid and waited with anticipation. To our surprise a couple of weeks later we were advised by e mail we had been successful, paid the winning price which was well within our offer and awaited the material by post. It duly arrived, but imagine our surprise when we opened the package to find that the one cancellation we thought we had "East London" was in fact "London W. C. 87 7.30PM NO 4 10".



As can be seen from the attached scan the cancellation is clearly a British, London West Central cancellation on a South African Union stamp. It is known that the stamp was on sale in London from the Office of the High Commissioner, which in 1910 was located at 72, Victoria Street, Westminster S. W. Maybe someone working there applied the new stamp to an envelope and posted it on their way home on that Friday evening back in 1910. Unless of course anyone else knows better?

○

A New Venue for our Annual Meeting Weekend 27-28 May

The Strawberry Bank Hotel in Meriden Coventry CV7 7NF

Book Now

Email: Simon@africastamps.co.uk



Extracts from
ABPS Exhibitions, Congress and International Newsletter, April 2017

This newsletter has the closing dates for ABPS York in July, Brasilia 2017 in April and Praga 2018 in November, together with the dates for this year's Autumn Stampex. Entry forms are on the ABPS website.

Our Next National Exhibition

ABPS York Fair National Exhibition: 21st - 22nd July 2017

York Race course, York YO23 1EX

Over 100 stamps and coin dealers, The pre-eminent show in the north of England.

A full national exhibition with all classes.

See the Rules and Entry Forms at <http://www.abps.org.uk/Exhibiting/Exhibitions/index.xalter>

The Philatelic Congress of Great Britain

Congress takes place in Cardiff from 27 to 30 July at the Jury's Inn, Park Place, Cardiff, CF10 3UD.

For further details see <http://gbcongress.uk/sample-page/2017-invitation-to-congress/>

Later National Exhibitions in London

Autumn Stampex 2017 12-16 September 2017 at the Business Design Centre, Islington, London.

This is an excellent commercial show with now more than 70 dealer stands.

A Full National Exhibition with the Sarawak Specialist Society as lead contributor, with 150 frames, both competitive and non-competitive.

The Hungarian Society will take 20 frames in celebration of the 150th anniversary of Hungarian postage stamps. Of course frames will be available as usual for individual exhibitors. The application forms and further information is under the Exhibiting tab [here](#).

Illegal Stamps

Richard Gratton of the Fakes and Forgeries Commission gave a presentation on bogus and illegal stamps to participants at Taipei 2016, last November. This is an important topic for all collectors, and especially those who collect, display or exhibit in Thematic and Open Philately. Too many of these labels are finding their way into competitions, and this could lead to disqualification. Please see his presentation at:

<http://www.abps.org.uk/Exhibiting/Downloads/Prohibited-stamps-at-FIP-exhibitions-Tapei-2016.pdf>

FEPA Exhibitions Calendar

All forthcoming exhibitions are listed at <http://fepanews.com/International%20Exhibitions>

Future Stampex Exhibitions

Spring Stampex 2018 will feature British Islands, and will host a reception for Stockholmia 2019. Further details later.

Autumn Stampex 2018 is expected to include guest entries from the American Philatelic Society, and feature the ending of the First World War as a theme.

The final date for UK residents to qualify for London 2020 will be Spring Stampex in 2019.

Please note that UK national frame fees will increase to £25.00 per frame, or literature entry, from 1st January 2018.

Editors Note: Follow the link to the Illegal stamps. It contains some very interesting information

Argyll Etkin Limited

Specialists in all aspects of philately with particular interest in Southern African territories. When in London, please call in to inspect our stock. We are open Monday - Friday, 9 - 5.

Our webstore now offers 1000s of items of stamps & postal history, immediately available
www.argyll-etkin.com

Our twice-yearly **AUCTION SALES** have proved highly popular with collectors & dealers for both buying & selling. A Specimen catalogue of a recent sale will give details. Finally - having traded in London for nearly 40 years, we are still keen to make outright purchases of suitable material.

17 Waterloo Place (cnr with Pall Mall) London SW1 4AR

Tel: 0207 930 6100 Fax: 0207 930 6109
Email: philatelists@argyll-etkin.com

British Africa

Fine Stamps, Proofs, Varieties & Covers



Try a new source...

www.filat.ch

Filat AG

